

ROCKY RUN

THIS RUN EXECUTED 29 SEP 83 16.33.30

 HPC 211702 0470 75 UPDATED MARCH 1982

01 10-YEAR
 12 CUMULATIVE
 13 10-YEAR

01	10-YEAR	12 CUMULATIVE	13 10-YEAR	STAT	METRIC	HVINS	W	WSEL	EQ
01	0.00	0.00	0.00	0.00	0.00	0.00	0.00	0.250	0.00
02	0.00	0.00	-1.000	0.00	0.00	-1.000	0.00	0.00	0.00
03	110.000	150.000	200.000	201.000	0.00	0.00	0.00	0.00	0.00
04	1.000	0.00	0.00	0.00	0.00	0.00	0.00	0.00	0.00
05	0.00	0.00	0.00	0.100	0.300	0.00	0.00	0.00	0.00
06	0.00	531.000	1000.000	1377.000	2325.000	1377.000	0.00	0.00	0.00
07	0.00	0.00	0.00	0.00	0.00	10.400	0.00	0.00	0.00
08	2.000	23.000	1271.000	2125.000	0.00	0.00	0.00	0.00	0.00
09	10.000	0.00	7.200	1156.000	6.200	1340.000	5.800	1383.000	3.900
10	3.000	1443.000	0.700	1491.000	1.300	1573.000	1.000	1971.000	0.600
11	0.000	1298.000	-3.000	2010.000	-5.000	2030.000	-5.700	2050.000	-4.400
12	0.000	2090.000	-2.000	2110.000	0.600	2128.000	1.000	2135.000	1.600
13	0.000	2435.000	10.100	2427.000	13.100	2567.000	0.00	0.00	0.00
14	0.00	0.00	0.00	0.100	0.300	0.00	0.00	0.00	0.00
15	0.000	345.000	201.000	1047.000	1640.000	1047.000	0.00	0.00	0.00
16	0.000	16.000	677.000	695.000	4600.000	3200.000	4000.000	0.00	0.00
17	01.000	0.00	19.000	60.000	3.400	172.000	1.900	420.000	1.900
18	0.800	677.000	0.00	681.000	0.800	685.000	1.900	685.000	2.000
19	0.200	442.000	0.200	1130.000	5.100	1312.000	5.000	1505.000	6.500
20	7.000	1705.000	0.00	0.00	0.00	0.00	0.00	0.00	0.00
21	0.00	0.00	0.00	0.100	0.300	0.00	0.00	0.00	0.00
22	0.00	0.00	0.00	0.00	0.00	8.400	0.00	0.00	0.00
23	1.100	17.000	381.000	392.000	1000.000	1700.000	1200.000	0.00	0.00
24	22.000	0.00	22.000	85.000	14.900	180.000	7.200	224.000	4.700
25	2.000	377.000	2.500	381.000	1.800	383.000	1.200	385.000	1.800
26	3.000	392.000	4.700	415.000	12.300	451.000	14.900	596.000	11.700
27	13.400	676.000	23.700	776.000	0.00	0.00	0.00	0.00	0.00

40	-0.	-0.	.000	.300	.500	-0.	-0.	-0.	-0.	-0.
41	1.000	16.000	337.000	344.000	100.000	100.000	100.000	-0.	-0.	-0.
42	10.000	-0.	-0.	-0.	-0.	-0.	-0.	13.000	13.000	-0.
43	1.000	-0.	70.000	120.000	14.900	180.000	7.200	224.000	7.200	367.000
44	-2.400	367.000	-2.400	344.000	1.800	344.000	1.800	389.000	3.400	392.000
45	4.700	410.000	12.300	451.000	14.900	596.000	11.700	631.000	13.400	676.000
46	10.000	770.000	-0.	-0.	-0.	-0.	-0.	-0.	-0.	-0.
47	1.000	1.000	2.000	-0.	8.000	1.600	128.000	.396	-4.030	-4.030
48	1.000	-0.	-0.	-0.	153.000	153.000	153.000	-0.	-0.	-0.
49	-0.	-0.	1.000	7.600	19.100	-0.	-0.	-0.	-0.	-0.
50	10.000	-0.	-0.	-0.	-0.	-0.	-0.	19.100	19.100	-0.
51	0.000	-0.	20.000	-0.	120.000	20.000	-0.	370.000	19.100	-0.
52	10.000	10.000	-0.	770.000	22.200	-0.	-0.	-0.	-0.	-0.
53	1.000	17.000	1.000	342.000	50.000	50.000	50.000	-0.	-0.	-0.
54	20.000	-0.	21.000	5.000	14.300	180.000	7.200	224.000	4.700	369.000
55	2.000	177.000	2.000	341.000	1.800	383.000	1.200	385.000	1.800	389.000
56	3.000	352.000	4.700	410.000	12.300	451.000	14.900	596.000	11.700	631.000
57	10.000	770.000	22.200	770.000	-0.	-0.	-0.	-0.	-0.	-0.
58	1.000	300.000	733.000	960.000	1694.000	960.000	-0.	-0.	-0.	-0.
59	-0.	-0.	.000	.100	.300	-0.	-0.	-0.	-0.	-0.
60	1.000	19.000	329.000	347.000	900.000	1300.000	760.000	-0.	-0.	-0.
61	20.700	-0.	20.700	10.000	17.300	115.000	9.000	265.000	2.100	320.000
62	0.400	329.000	4.700	332.000	3.800	333.000	3.800	344.000	4.700	345.000
63	8.100	349.000	7.200	549.000	8.100	572.000	11.100	637.000	11.200	647.000
64	12.400	348.000	12.400	657.000	17.800	672.000	21.600	807.000	-0.	-0.
65	-0.	-0.	.000	.300	.500	-0.	-0.	-0.	-0.	-0.
66	1.000	10.000	319.000	334.000	100.000	100.000	100.000	-0.	-0.	-0.
67	10.000	-0.	-0.	-0.	-0.	-0.	-0.	10.140	10.140	-0.
68	1.000	13.000	103.000	-0.	-0.	-0.	-0.	-0.	-0.	-0.
69	20.700	-0.	20.000	50.000	15.000	110.000	13.280	115.000	9.000	265.000
70	1.000	310.000	6.630	319.000	3.980	319.850	3.980	339.650	6.630	339.650
71	1.000	349.000	7.200	549.000	8.100	572.000	11.100	637.000	11.200	647.000
72	12.400	348.000	12.400	657.000	17.800	672.000	21.600	750.740	20.170	807.000
73	1.000	2.110	3.000	-0.	10.000	1.000	66.860	.532	3.720	3.720
74	2.000	-0.	-0.	-0.	48.000	48.000	48.000	-0.	-0.	-0.
75	-0.	-0.	1.000	9.280	13.500	-0.	-0.	-0.	-0.	-0.
76	10.000	-0.	-0.	-0.	-0.	-0.	-0.	13.500	16.260	-0.
77	7.000	-0.	20.700	-0.	30.000	20.000	-0.	110.000	15.000	-0.
78	110.000	13.280	-0.	163.360	13.500	-0.	549.000	16.280	-0.	807.000
79	20.170	-0.	-0.	-0.	-0.	-0.	-0.	-0.	-0.	-0.
80	1.000	19.000	329.000	349.000	50.000	50.000	50.000	-0.	-0.	-0.
81	20.700	-0.	20.700	10.000	17.300	115.000	9.000	265.000	8.100	320.000
82	0.400	329.000	4.700	332.000	3.800	333.000	3.800	344.000	4.700	345.000
83	8.100	349.000	7.200	549.000	8.100	572.000	11.100	637.000	11.200	647.000
84	12.400	348.000	12.400	657.000	17.800	672.000	21.600	807.000	-0.	-0.

6

THIS RUN EXECUTED 29 SEP 83 16.33.32

 HEC2 RELEASE DATED NOV 76 UPDATED MARCH 1982
 ERROR CORR - 01,02,03,04,05
 MODIFICATION - 50,51,52,53,64,55

ROCKY RIV
 CRAVEN COUNTY
 50- YEAR

J1	ICHECK	IN	INW	IDIR	STRT	METRIC	HVINS	G	#SEL	FG
	-0.	0.	-0.	-0.	-0.	-0.	-0.	-0.	.250	-0.
J2	WRDF	IPLDT	PKFVS	XSECV	YSECH	FN	ALLOC	IBW	CHNIM	ITRACE
	2.000	-0.	-1.000	-0.	-0.	-0.	-1.000	-0.	-0.	-0.

THIS RUN EXECUTED 29 SEP 83 16.33.32

 HEC2 RELEASE DATED NOV 76 UPDATED MARC 1982
 ERROR CORR - 01,02,03,04,05
 MODIFICATION - 50,51,52,53,54,55

P1 ROCKY JUV
 T2 CRAVEN COUNTY
 T3 100- YEAR

J1	ICHECK	IND	WINV	IDIR	STRT	MFTRIC	HVINS	Q	WSEL	FG
	-0.		-0.	-0.	.001000	-0.	-0.	-0.	.250	-0.
J2	MPROF	IPVAT	PRFVS	XSECV	XSECH	FN	ALLOC	IBW	CHNIM	ITRACE
	3.000	-0.	-1.000	-0.	-0.	-0.	-1.000	-0.	-0.	-0.

THIS RUN EXECUTED 29 SEP 83 16.33.32

 HEC2 RELEASE DATED NOV 75 UPDATED MARC 1982
 ERRORS CORR - 01,02,03,04,05
 MODIFICATION - 50,51,52,53,54,55

T1 ROCKY RUN
 T2 CRAVEN COUNTY
 T3 500- YEAR

J1	ICHECK	INQ	ALNV	IDIR	STRT	METRIC	HVINS	Q	WSEL	FO
	-0.	5.	-0.	-0.	.001003	-0.	-0.	-0.	.250	-0.
J2	WPROF	IFLOT	PRFVS	XSECV	XSECH	FN	ALLDC	IBW	CHNIN	ITRACE
	15.000	-0.	-1.000	-0.	-0.	-0.	-1.000	-0.	-0.	-0.

 HEC2 RELEASE DATED NOV 76 UPDATED MARCH 1982
 ERROR CORR - 01,02,03,04,05
 MODIFICATION - 50,51,52,53,54,55

NOTE- ASTERISK (*) AT LEFT OF CROSS-SECTION NUMBER INDICATES MESSAGE IN SUMMARY OF ERRORS LIST

AR
 SUMMARY PRINTOUT TABLE 110

SECNO	OWSEL	DIFKWS	EG	TOP#10	QLOB	QCH	QROB	PERENC	STENCL	STCHL	STCHR	STENCR
1.000	.25	0.	.26	146.95	0.	531.00	0.	0.	0.	1971.00	2135.00	0.
1.000	.25	0.	.31	146.95	0.	1060.00	0.	0.	0.	1971.00	2135.00	0.
1.000	.55	.30	.64	150.48	0.	1377.00	0.	0.	0.	1971.00	2135.00	0.
1.000	1.98	1.73	2.09	920.71	96.69	2259.52	28.79	0.	0.	1971.00	2135.00	0.
2.000	3.43	0.	3.44	796.40	189.66	59.27	146.07	0.	0.	677.00	685.00	0.
2.000	4.26	0.	4.28	809.65	425.25	83.48	292.27	0.	0.	677.00	685.00	0.
2.000	4.79	0.	4.79	817.57	572.31	95.29	379.40	0.	0.	677.00	685.00	0.
2.000	5.97	0.	5.98	1087.32	1020.85	132.99	686.16	0.	0.	677.00	685.00	0.
1.100	6.44	0.	6.73	154.98	79.11	263.10	52.79	0.	0.	381.00	392.00	0.
1.100	7.47	0.	7.91	205.54	245.52	436.46	119.02	0.	0.	381.00	392.00	0.
1.100	7.83	0.	6.39	209.92	366.89	523.37	156.73	0.	0.	381.00	392.00	0.
1.100	9.01	0.	9.65	221.77	798.21	762.75	279.05	0.	0.	381.00	392.00	0.
1.200	6.50	0.	7.06	17.00	0.	395.00	0.	0.	0.	367.00	384.00	0.
1.200	8.03	0.	8.52	17.00	0.	801.00	0.	0.	0.	367.00	384.00	0.
1.200	8.51	0.	9.25	17.00	0.	1047.00	0.	0.	0.	367.00	384.00	0.
1.200	9.61	0.	11.41	17.00	0.	1840.00	0.	0.	0.	367.00	384.00	0.
1.300	6.99	0.	7.10	17.00	0.	395.00	0.	0.	0.	367.00	384.00	0.
1.300	8.72	0.	9.13	17.00	0.	801.00	0.	0.	0.	367.00	384.00	0.
1.300	9.82	0.	10.39	17.00	0.	1047.00	0.	0.	0.	367.00	384.00	0.
1.300	14.58	0.	15.38	17.00	0.	1840.00	0.	0.	0.	367.00	384.00	0.
1.400	7.11	0.	7.23	196.94	116.41	214.49	64.10	0.	0.	381.00	392.00	0.
1.400	9.27	0.	9.34	224.47	384.21	286.26	130.54	0.	0.	381.00	392.00	0.
1.400	10.56	0.	10.62	238.00	554.70	320.47	171.83	0.	0.	381.00	392.00	0.
1.400	15.63	0.	15.65	526.37	1034.35	371.40	434.26	0.	0.	381.00	392.00	0.
2.100	9.07	0.	9.18	329.37	12.08	223.54	122.58	0.	0.	329.00	349.00	0.
2.100	10.59	0.	10.64	389.89	67.41	305.92	359.67	0.	0.	329.00	349.00	0.
2.100	11.56	0.	11.59	428.53	111.60	337.05	511.35	0.	0.	329.00	349.00	0.
2.100	15.91	0.	15.92	526.60	310.18	383.20	1000.62	0.	0.	329.00	349.00	0.

SECNO	CWSEL	DIFKYS	ES	TOPWID	3L08	GCH	DR08	PERENC	STENCL	STCHL	STCHR	STENCR
2.200	9.23	0.	9.41	19.80	0.	359.00	0.	0.	0.	319.85	339.65	0.
2.200	10.71	0.	10.78	394.97	49.14	387.70	296.17	0.	0.	319.85	339.65	0.
2.200	11.64	0.	11.59	430.43	90.16	411.36	458.47	0.	0.	319.85	339.65	0.
2.200	15.93	0.	15.94	568.05	323.89	405.88	964.24	0.	0.	319.85	339.65	0.
2.300	10.04	0.	10.18	19.80	0.	359.00	0.	0.	0.	319.85	339.65	0.
2.300	13.79	0.	13.86	226.14	230.76	502.24	0.	0.	0.	319.85	339.65	0.
2.300	14.54	0.	14.44	227.75	338.57	621.43	0.	0.	0.	319.85	339.65	0.
2.300	15.57	0.	16.10	241.24	754.32	939.67	0.	0.	0.	319.85	339.65	0.
2.400	10.23	0.	10.25	375.42	28.97	161.98	168.05	0.	0.	329.00	349.00	0.
2.400	13.89	0.	13.89	484.49	114.91	193.88	424.21	0.	0.	329.00	349.00	0.
2.400	14.47	0.	14.48	496.60	158.28	241.31	560.41	0.	0.	329.00	349.00	0.
2.400	16.15	0.	16.16	531.62	315.01	377.37	1001.62	0.	0.	329.00	349.00	0.
4.000	13.05	0.	13.13	130.46	48.40	78.61	47.00	0.	0.	515.00	527.00	0.
4.000	15.03	0.	15.06	158.84	135.58	127.57	106.85	0.	0.	515.00	527.00	0.
4.000	15.56	0.	15.70	184.53	187.88	160.74	143.38	0.	0.	515.00	527.00	0.
4.000	17.20	0.	17.36	468.53	403.01	247.06	249.93	0.	0.	515.00	527.00	0.
5.000	19.54	0.	19.43	133.34	43.28	78.41	52.31	0.	0.	422.00	433.00	0.
5.000	20.29	0.	20.30	149.47	111.93	139.59	118.48	0.	0.	422.00	433.00	0.
5.000	20.83	0.	20.91	159.13	159.63	172.10	160.28	0.	0.	422.00	433.00	0.
5.000	22.23	0.	22.33	205.49	326.05	270.43	303.52	0.	0.	422.00	433.00	0.

AR
SUMMARY PRINTOUT TABLE 150

SECNO	XLCH	ELTRD	EGLD	ELMIN		CHSEL	CRHS	EG	10K+S	VCH	AREA	.01K
1.000	0.	0.	0.	-5.80	531.00	.25	-3.83	.26	1.88	.57	545.46	387.37
1.000	0.	0.	0.	-5.80	1060.00	.25	-3.02	.31	7.49	1.84	545.46	387.37
1.000	0.	0.	0.	-5.80	1377.00	.55	-2.64	.64	10.00	2.33	590.78	435.49
1.000	0.	0.	0.	-5.90	2385.00	1.98	-1.73	2.09	10.04	2.75	1431.46	1027.70
2.000	4000.00	0.	0.	0.	395.00	3.43	2.58	3.44	14.01	2.45	1017.12	105.51
2.000	4000.00	0.	0.	0.	801.00	4.26	2.82	4.28	12.27	2.70	1692.61	228.68
2.000	4000.00	0.	0.	0.	1047.00	4.78	2.95	4.79	10.64	2.73	2101.75	321.03
2.000	4000.00	0.	0.	0.	1840.00	5.97	3.31	5.98	9.25	2.99	3293.11	605.05
1.100	1200.00	0.	0.	1.20	395.00	6.44	5.29	6.73	46.33	5.30	235.61	58.03
1.100	1200.00	0.	0.	1.20	801.00	7.47	6.58	7.91	64.57	7.17	424.84	99.68
1.100	1200.00	0.	0.	1.20	1047.00	7.88	7.21	8.39	72.78	8.00	511.93	122.73
1.100	1200.00	0.	0.	1.20	1840.00	9.01	8.12	9.65	86.43	9.75	756.62	197.92
1.200	100.00	0.	0.	-.43	395.00	6.90	2.13	7.06	20.84	3.17	124.64	86.53
1.200	100.00	0.	0.	-.43	801.00	8.03	3.66	8.52	53.88	5.57	143.90	109.12
1.200	100.00	0.	0.	-.43	1047.00	8.51	4.46	9.25	76.69	6.89	152.00	119.55
1.200	100.00	0.	0.	-.43	1840.00	9.61	6.68	11.41	161.04	10.78	170.65	145.00
1.300	153.00	19.10	7.60	-.43	395.00	6.94	0.	7.10	20.49	3.15	125.35	87.26
1.300	153.00	19.10	7.60	-.43	801.00	8.72	0.	9.13	41.99	5.15	155.53	124.21
1.300	153.00	19.10	7.60	-.43	1047.00	9.82	0.	10.38	48.98	6.01	174.31	150.21
1.300	153.00	19.10	7.60	-.43	1840.00	14.50	0.	15.38	42.12	7.21	255.17	283.50
1.400	50.00	0.	0.	1.20	395.00	7.11	5.24	7.23	27.96	3.77	353.31	74.70
1.400	50.00	0.	0.	1.20	801.00	9.27	6.49	9.34	15.55	3.54	814.34	203.10
1.400	50.00	0.	0.	1.20	1047.00	10.56	6.91	10.62	11.35	3.37	1113.70	310.84
1.400	50.00	0.	0.	1.20	1840.00	15.63	8.04	15.65	3.27	2.46	2966.06	1016.90
2.100	760.00	0.	0.	3.80	359.00	9.07	6.66	9.13	16.39	2.51	461.50	188.67
2.100	760.00	0.	0.	3.80	733.00	10.59	8.53	10.64	11.50	2.56	1009.11	216.14
2.100	760.00	0.	0.	3.80	960.00	11.56	8.75	11.59	8.48	2.43	1404.91	329.70
2.100	760.00	0.	0.	3.80	1694.00	15.91	9.52	15.92	2.16	1.70	3491.58	1152.56
2.200	100.00	0.	0.	3.98	359.00	9.23	6.14	9.41	29.24	3.45	103.94	66.39
2.200	100.00	0.	0.	3.98	733.00	10.71	7.46	10.78	14.83	2.91	870.44	190.37
2.200	100.00	0.	0.	3.98	960.00	11.64	8.15	11.69	10.85	2.71	1256.43	291.41
2.200	100.00	0.	0.	3.98	1694.00	15.93	10.14	15.94	2.40	1.71	3454.22	1092.35
2.300	48.00	13.50	9.28	3.98	359.00	10.04	0.	10.18	18.15	2.99	119.94	84.27
2.300	48.00	13.50	9.28	3.98	733.00	13.79	0.	13.86	7.11	2.59	696.07	274.82
2.300	48.00	13.50	9.28	3.98	960.00	14.34	0.	14.44	9.07	3.03	821.41	318.69
2.300	48.00	13.50	9.26	3.98	1694.00	15.97	0.	16.10	12.78	3.86	1198.65	473.82

SECYJ	KLCH	ELTRD	ELLC	ELMIN	Q	CWSEL	CRWS	EG	10K+S	VCH	AREA	.01K
2.400	50.00	0.	0.	3.80	359.00	10.23	6.65	10.25	3.98	1.45	869.79	180.02
2.400	50.00	0.	0.	3.80	733.00	13.89	8.52	13.89	1.07	1.05	2470.59	709.52
2.400	50.00	0.	0.	3.80	960.00	14.47	8.87	14.48	1.35	1.23	2755.47	826.23
2.400	50.00	0.	0.	3.80	1694.00	16.15	9.51	16.16	1.95	1.64	3618.97	1212.31
4.000	1770.00	0.	0.	9.80	174.00	13.08	12.08	13.13	28.53	2.47	209.42	32.58
4.000	1770.00	0.	0.	9.80	370.00	15.03	12.52	15.06	12.06	2.32	486.58	106.56
4.000	1770.00	0.	0.	9.80	492.00	15.66	12.76	15.70	12.44	2.57	595.38	139.52
4.000	1770.00	0.	0.	9.80	900.00	17.32	13.36	17.36	11.69	2.89	1125.80	263.21
5.000	2250.00	0.	0.	16.00	174.00	19.38	18.34	19.43	28.91	2.55	209.58	32.36
5.000	2250.00	0.	0.	16.00	370.00	20.29	18.84	20.36	36.12	3.43	337.12	61.57
5.000	2250.00	0.	0.	16.00	492.00	20.83	19.07	20.91	34.86	3.69	420.47	83.33
5.000	2250.00	0.	0.	16.00	900.00	22.23	19.68	22.33	33.18	4.35	673.57	156.25

AR

SUMMARY PRINTOUT TABLE 150

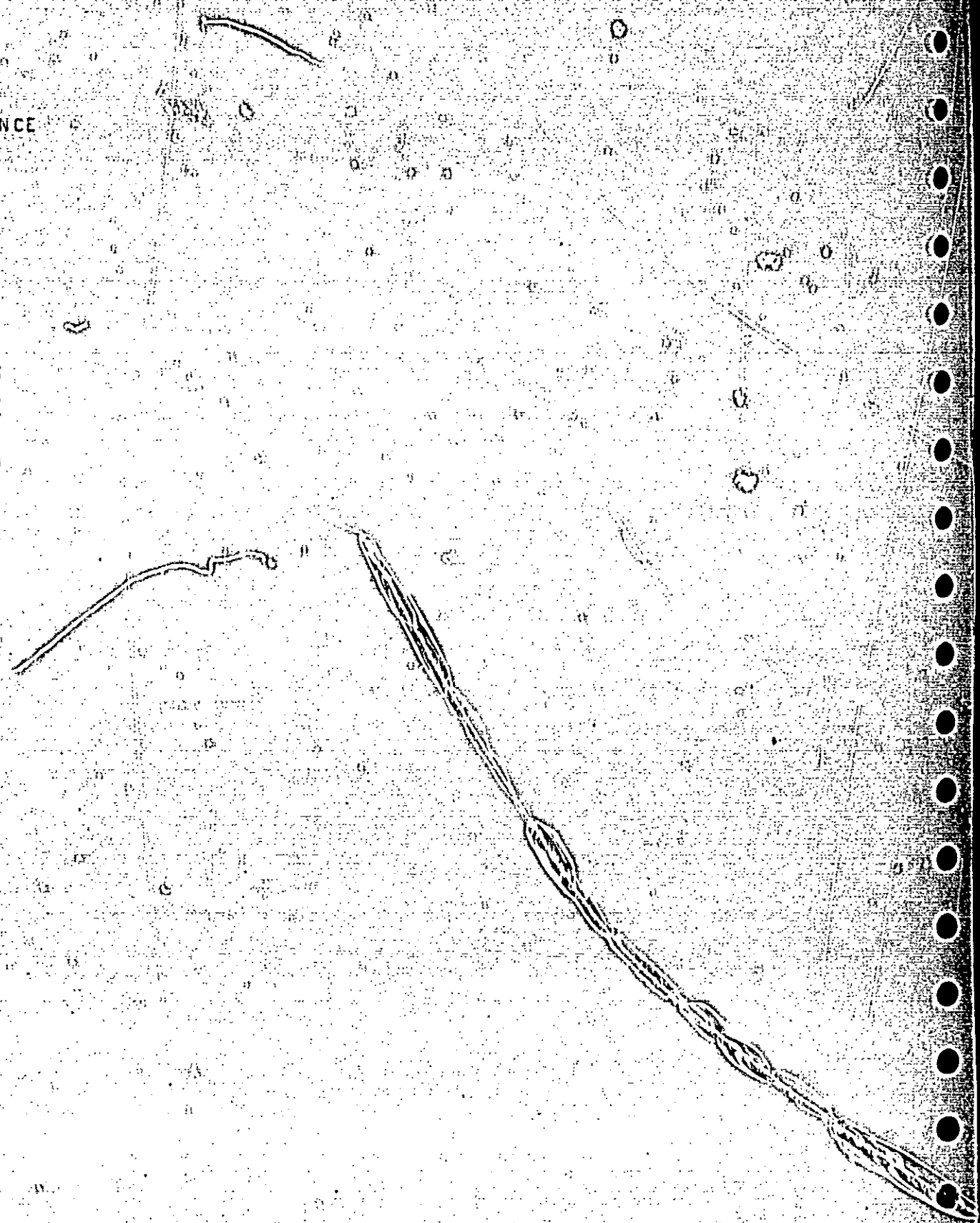
SECNO	Q	CRSEL	DIFWSP	DIFWSX	DIFKWS	TOPWID	XLCH
1.000	531.00	.25	0.	0.	0.	146.95	0.
1.000	1050.00	.25	0.	0.	0.	146.95	0.
1.000	1377.00	.55	.30	0.	.30	150.48	0.
1.000	2385.00	1.33	1.43	0.	1.73	920.71	0.
2.000	395.00	3.43	0.	3.18	0.	796.40	4000.00
2.000	801.00	4.25	.84	4.01	0.	809.65	4000.00
2.000	1047.00	4.73	.52	4.22	0.	817.57	4000.00
2.000	1840.00	5.37	1.13	3.38	0.	1087.32	4000.00
1.100	395.00	6.44	0.	3.01	0.	154.38	1200.00
1.100	801.00	7.47	1.03	3.20	0.	205.54	1200.00
1.100	1047.00	7.83	.41	3.10	0.	209.92	1200.00
1.100	1840.00	9.01	1.13	3.05	0.	221.77	1200.00
1.200	395.00	6.30	0.	.47	0.	17.00	100.00
1.200	801.00	8.03	1.13	.57	0.	17.00	100.00
1.200	1047.00	9.51	.48	.53	0.	17.00	100.00
1.200	1840.00	9.81	1.10	.60	0.	17.00	100.00
1.300	395.00	6.94	0.	.04	0.	17.00	153.00
1.300	801.00	8.72	1.77	.68	0.	17.00	153.00
1.300	1047.00	9.82	1.10	1.31	0.	17.00	153.00
1.300	1840.00	14.58	4.76	4.97	0.	17.00	153.00
1.400	395.00	7.11	0.	.16	0.	196.94	50.00
1.400	801.00	9.27	2.16	.55	0.	224.47	50.00
1.400	1047.00	10.55	1.30	.74	0.	238.00	50.00
1.400	1840.00	15.63	5.06	1.05	0.	526.37	50.00
2.100	359.00	9.07	0.	1.87	0.	329.37	760.00
2.100	733.00	10.59	1.52	1.32	0.	389.89	760.00
2.100	960.00	11.55	.94	.99	0.	428.53	760.00
2.100	1634.00	15.91	4.35	.28	0.	526.60	760.00
2.200	359.00	9.23	0.	.16	0.	19.80	100.00
2.200	733.00	10.71	1.48	.12	0.	394.97	100.00
2.200	960.00	11.54	.93	.09	0.	430.43	100.00
2.200	1634.00	15.93	4.29	.02	0.	568.05	100.00
2.300	359.00	10.04	0.	.81	0.	19.30	48.00
2.300	733.00	13.73	3.76	3.08	0.	226.14	48.00
2.300	960.00	14.34	.55	2.70	0.	227.75	48.00
2.300	1634.00	15.97	1.62	.03	0.	241.24	48.00

SECNO		CASEL	DIFWSP	DIFWSX	DIFKWS	TOPWID	XLCH
2.400	359.00	10.23	0.0	.19	0.	375.42	50.00
2.400	733.00	13.89	3.66	.10	0.	484.49	50.00
2.400	950.00	14.47	.58	.12	0.	496.60	50.00
2.400	1694.00	16.15	1.69	.18	0.	531.62	50.00
4.000	174.00	13.08	0.	2.85	0.	130.46	1770.00
4.000	370.00	15.03	1.94	1.14	0.	158.84	1770.00
4.000	492.00	15.66	.64	1.19	0.	184.53	1770.00
4.000	900.00	17.32	1.66	1.17	0.	468.53	1770.00
5.000	174.00	19.38	0.	6.30	0.	133.34	2260.00
5.000	370.00	20.29	.90	5.26	0.	149.47	2260.00
5.000	492.00	20.83	.54	5.17	0.	159.13	2260.00
5.000	900.00	22.23	1.40	4.91	0.	205.49	2260.00

29 SEP 63 16.33.30

FLOODWAY DATA, AR
PROFILE NO. 12

STATION	WIDTH	FLOODWAY SECTION AREA	MEAN VELOCITY	WATER SURFACE ELEVATION		
				WITH FLOODWAY	WITHOUT FLOODWAY	DIFFERENCE
1.000	147.	595.	1.9	.3	.3	0.
2.000	819.	1393.	.5	4.2	3.4	.8
1.100	205.	325.	1.9	7.4	6.4	1.0
1.200	17.	144.	5.6	8.0	6.9	1.1
1.300	17.	156.	5.2	8.7	6.9	1.8
1.400	224.	314.	1.0	9.3	7.1	2.2
2.100	373.	1303.	.7	10.6	9.1	1.5
2.200	373.	470.	.4	10.7	9.2	1.5
2.300	236.	696.	1.1	13.8	10.0	3.8
2.400	494.	2471.	.3	13.9	10.2	3.7
4.000	410.	437.	.8	15.0	13.1	1.9
5.000	144.	337.	1.1	20.3	19.4	.9



FLOODWAY DATA, AR
PROFILE NO. 3

STATION	WIDTH	FLOODWAY SECTION AREA	MEAN VELOCITY	WATER SURFACE ELEVATION		
				WITH FLOODWAY	WITHOUT FLOODWAY	DIFFERENCE
1.000	150.	591.	2.3	.6	.3	.3
2.000	118.	2102.	.5	4.8	3.4	1.4
1.100	210.	512.	2.0	7.8	6.4	1.4
1.200	17.	152.	6.9	8.5	6.9	1.6
1.300	17.	174.	6.0	9.3	6.9	2.9
1.400	239.	1114.	.9	10.6	7.1	3.5
2.100	429.	1405.	.7	11.6	9.1	2.5
2.200	430.	1256.	.8	11.6	9.2	2.4
2.300	224.	821.	1.2	14.3	10.0	4.3
2.400	497.	2755.	.3	14.4	10.2	4.2
4.000	429.	595.	.8	15.7	13.1	2.6
5.000	157.	420.	1.2	20.3	19.4	1.4

FLOODWAY DATA, AR
PROFILE NO. 4

STATION	WIDTH	FLOODWAY SECTION AREA	MEAN VELOCITY	WATER SURFACE ELEVATION DIFFERENCE		
				WITH FLOODWAY	WITHOUT FLOODWAY	
1.000	421.	1431.	1.7	2.0	.3	1.7
2.000	1359.	3293.	.6	5.9	3.4	2.5
1.100	222.	757.	2.4	9.0	6.4	2.6
1.200	17.	171.	10.8	9.8	6.9	2.7
1.300	17.	255.	7.2	14.5	6.9	7.6
1.400	526.	2966.	.6	15.6	7.1	8.5
2.100	527.	3492.	.5	15.7	9.1	6.8
2.200	568.	3454.	.5	15.9	9.2	6.7
2.300	241.	1159.	1.4	15.9	10.0	5.9
2.400	532.	3519.	.5	16.1	10.2	5.9
4.000	597.	1125.	.8	17.3	13.1	4.2
5.000	205.	574.	1.3	22.2	19.4	2.8

THIS RUN EXECUTED 30 SEP 83 10.02.27

 HEC2 RELEASE DATED NOV 76 UPDATED MARCH 1982
 ERROR CORR - 01,02,03,04,05
 MODIFICATION - 50,51,52,53,54,55

T1 ROCKY RJV
 T2 CRAVEN COUNTY
 T3 FLOODWAY

J1	ICHECK	INW	VIEW	IDIR	SIRT	METRIC	HVINS	Q	WSEL	FG
	-0.	6.	-0.	-0.	-0.	-0.	-0.	-0.	2.060	-0.
J2	NPROF	IPLT	PRFS	XSECV	XSECH	FN	ALLDC	IBW	CHNIM	ITRACE
	15.000	-0.	-1.000	-0.	-0.	-0.	-1.000	-0.	-0.	-0.

IMLEG = 1. THEREFORE FRICTION LOSS (HL) IS CALCULATED AS A FUNCTION OF PROFILE TYPE, WHICH CAN VARY FROM REACH TO REACH. SEE DOCUMENTATION FOR DETAILS.

THIS RUN EXECUTED 30 SEP 83 10.02.27

 HCC2 RELEASE DATED NOV 76 UPDATED MARC 1982
 ERROR CORR - 01,02,03,04,05
 MODIFICATION - 50,51,52,53,54,55

NOTE- ASTERISK (*) AT LEFT OF CROSS-SECTION NUMBER INDICATES MESSAGE IN SUMMARY OF ERRORS LIST

BASE FLOOD

SUMMARY PRINTOUT TABLE 110

SECNO	EWSEL	DIFKWS	EG	TOPWID	QLDB	GCH	PROB	PERENC	STENCL	STCHL	STCHR	STENCR
1.000	1.06	0.	1.13	338.05	.87	1376.11	.01	0.	0.	1971.00	2135.00	0.
1.000	24.06	1.00	2.10	164.00	0.	1377.00	0.	.06	1971.00	1971.00	2135.00	2135.00
2.000	4.76	0.	4.77	817.41	572.03	95.52	379.45	0.	0.	677.00	685.00	0.
2.000	5.52	.76	5.55	406.47	620.37	138.83	267.80	.42	406.65	677.00	685.00	813.12
1.100	7.89	0.	8.39	209.93	366.94	523.33	156.73	0.	0.	381.00	392.00	0.
1.100	8.52	.79	9.26	92.15	394.62	610.65	41.72	.23	306.53	381.00	392.00	398.69
1.200	8.51	0.	9.25	17.00	0.	1047.00	0.	0.	0.	367.00	384.00	0.
1.200	9.38	.87	9.99	17.00	0.	1047.00	0.	0.	367.00	367.00	384.00	384.00
1.300	9.82	0.	10.38	17.00	0.	1047.00	0.	0.	0.	367.00	384.00	0.
1.300	10.69	.87	11.17	17.00	0.	1047.00	0.	0.	367.00	367.00	384.00	384.00
1.400	10.56	0.	10.62	238.01	554.71	320.46	171.83	0.	0.	381.00	392.00	0.
1.400	11.31	.75	11.38	162.73	584.03	354.11	108.86	.16	249.08	381.00	392.00	411.81
2.100	11.56	0.	11.59	428.53	111.60	337.05	511.36	0.	0.	329.00	349.00	0.
2.100	12.24	.60	12.28	235.62	30.84	385.73	543.44	.20	317.22	329.00	349.00	552.84
2.200	11.64	0.	11.70	430.44	90.16	411.35	458.48	0.	0.	319.85	339.65	0.
2.200	12.32	.63	12.38	240.44	1.88	462.93	495.19	.21	318.51	319.85	339.65	558.95
2.300	14.34	0.	14.44	227.75	338.57	621.43	0.	0.	0.	319.85	339.65	0.
2.300	15.02	.68	15.12	84.03	314.16	645.84	0.	.14	255.57	319.85	339.65	339.65
2.400	14.47	0.	14.48	496.60	158.28	241.31	560.41	0.	0.	329.00	349.00	0.
2.400	15.15	.63	15.15	322.37	117.40	265.70	576.90	.14	269.17	329.00	349.00	591.55
4.000	15.66	0.	15.70	194.53	187.88	160.74	143.38	0.	0.	515.00	527.00	0.
4.000	16.30	.64	16.35	101.50	182.15	192.08	117.77	.21	458.71	515.00	527.00	560.21

SECNO	CWSEL	DIFKWS	EG	TOP/10	QLOB	QCH	QROB	PERENC	STENCL	STCHL	STCHR	STENCR
5.000	20.85	0.	20.91	159.13	158.63	172.10	160.28	0.	0.	422.00	433.00	0.
5.000	21.43	.60	21.55	86.91	142.97	213.89	135.14	.25	380.59	422.00	433.00	467.50

FLOODWAY DATA, BASE FLOOD
 PROFILE NO. 2

STATION	WIDTH	FLOODWAY SECTION AREA	MEAN VELOCITY	WATER SURFACE ELEVATION		
				WITH FLOODWAY	WITHOUT FLOODWAY	DIFFERENCE
1.000	164.	334.	1.7	2.1	1.1	1.0
2.000	406.	1473.	.7	5.6	4.8	.8
1.100	32.	381.	2.7	8.6	7.9	.7
1.200	17.	157.	6.3	9.4	8.5	.9
1.300	17.	189.	5.5	10.7	9.8	.9
1.400	163.	1012.	1.0	11.3	10.6	.7
2.100	236.	1145.	.8	12.3	11.6	.7
2.200	240.	1022.	.9	12.3	11.6	.7
2.300	34.	607.	1.6	15.0	14.3	.7
2.400	322.	2419.	.4	15.2	14.5	.7
4.000	102.	504.	1.0	16.3	15.7	.6
5.000	87.	335.	1.5	21.4	20.8	.6

SCOTT'S

CREEK

