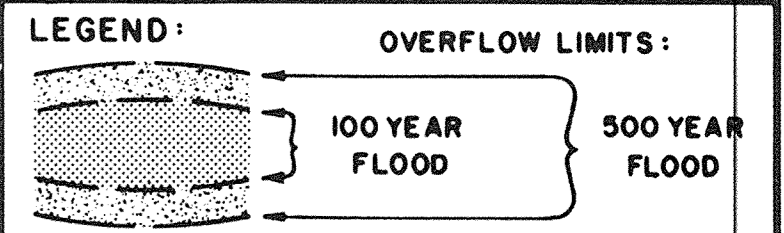
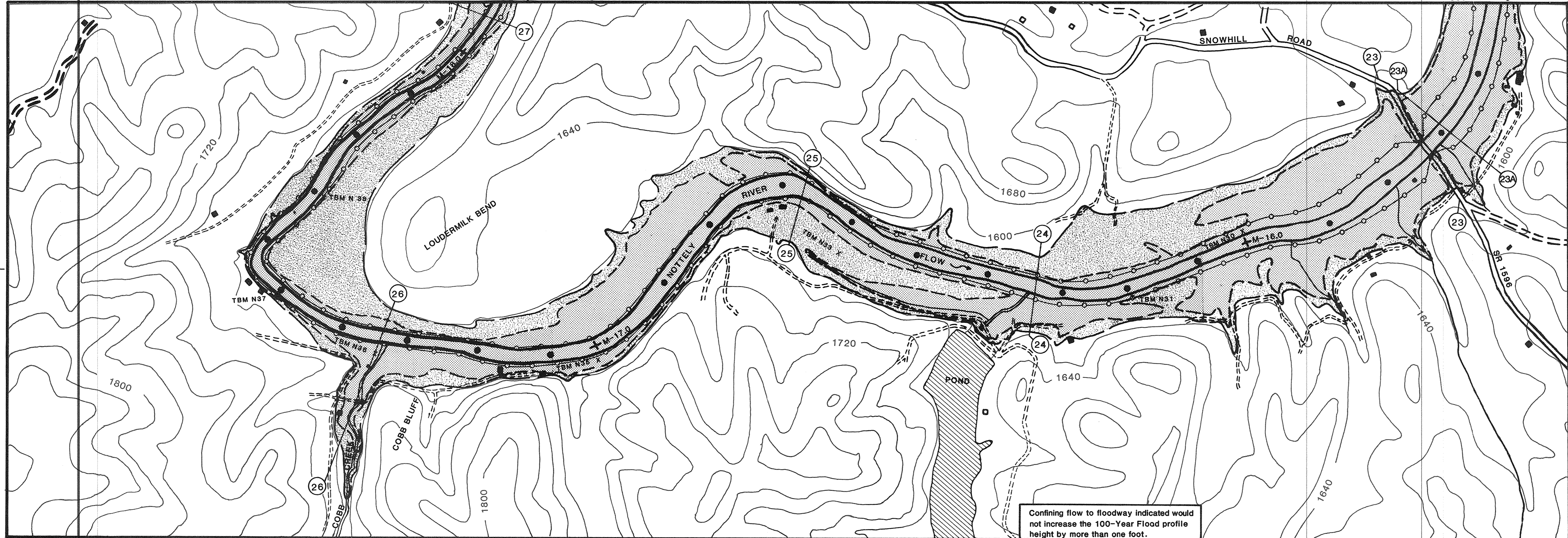


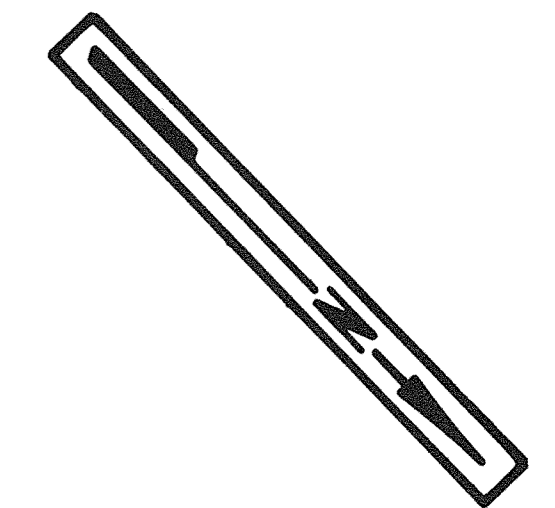
See Plate 7

See Plate 5



- + M-16.0 MILES ABOVE MOUTH
- 1/10 MILE MARK
- (24) — (24) CROSS SECTION
- — ○ FLOODWAY

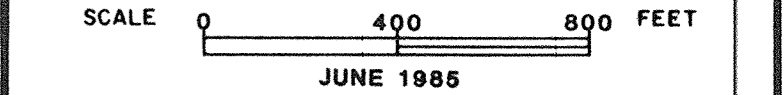
*The extent of flood overflow is based on data and measurements from aerial photography. Because of the methods used, the flooded areas as shown may not represent exact conditions on the ground.*



Base map is a reproduced portion of USGS-TVA topographic quadrangle maps 141-SE and 142-NE dated 1973 and 1966, respectively, with minor revisions.

**TENNESSEE VALLEY AUTHORITY**  
OFFICE OF NATURAL RESOURCES AND ECONOMIC DEVELOPMENT

**FLOODED AREAS  
WITH PROPOSED FLOODWAY  
NOTTELY RIVER  
MILE 15.60 TO MILE 18.00  
CHEROKEE CO., NC**



Confining flow to floodway indicated would not increase the 100-Year Flood profile height by more than one foot.