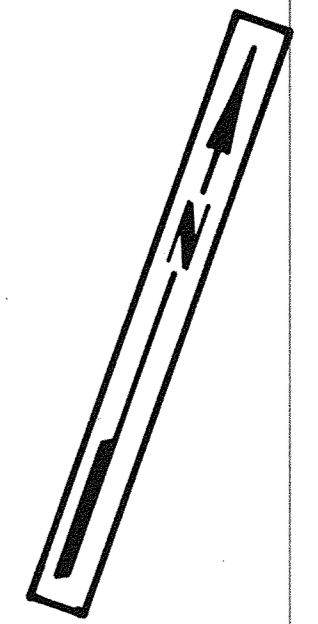


- LEGEND:
- OVERFLOW LIMITS
  - MAXIMUM PROBABLE FLOOD
  - 500 YEAR FLOOD
  - 100 YEAR FLOOD
  - X M-18.0 MILES ABOVE MOUTH
  - 1/10 MILE MARK
  - 8 — CROSS SECTION

The extent of flood overflow is based on data and measurements from aerial photography. Because of the methods used, the flooded areas as shown may not represent exact conditions on the ground.



TENNESSEE VALLEY AUTHORITY  
OFFICE OF ECONOMIC AND COMMUNITY DEVELOPMENT

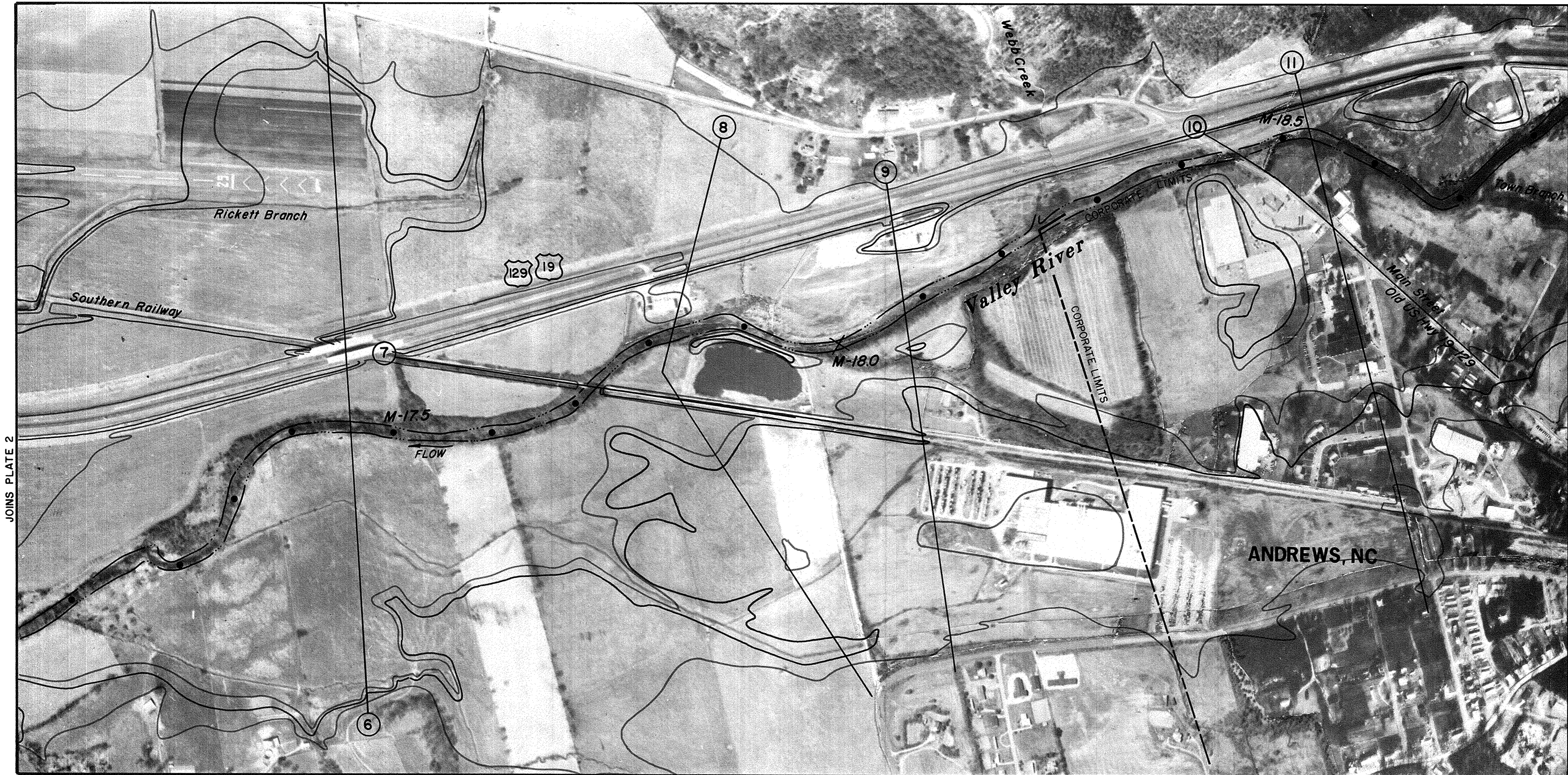
**FLOODED AREAS**

VALLEY RIVER  
MILE 17.03 to 18.84  
ANDREWS, NC

SCALE 0 400 800 FEET



MARCH 1982



JOINS PLATE 2

JOINS PLATE 4