
 HEC2 VERSION UPDATED JAN 1975
 ERROR CORRECTIONS 01,02,03,04,05,06,07,08
 MODIFICATIONS 52,53,54,55,56,57,58

C
 1 ROWAN COUNTY BASIN A STREAM 8
 T2 FLOODPLAIN STUDY AT ROWAN & DAVIDSON COUNTIES M-G JOB NO. 6918
 T3 10 YEAR FLOOD WATER SURFACE PROFILE

J1	ICHECK	INO	NINV	IDIR	STRT	METRIC	HVINS	Q	WSEL	FQ
	-1.	2.	0.	0.	0.026000	0.0	0.0	0.	689.300	0.0
J2	NPROF	IPLOT	PRFVS	XSECV	XSECH	FN	ALLDC	IBW	CHNIM	ITRACE
	0.0	0.0	-1.000	0.0	0.0	0.0	0.0	0.0	0.0	0.0
J3	1.000	34.000	3.000	4.000	27.000	28.000	26.000	0.0	0.0	0.0
NC	0.055	0.055	0.035	0.100	0.300	0.0	0.0	0.0	0.0	0.0
QT	5.000	380.000	740.000	929.000	1397.000	929.000	0.0	0.0	0.0	0.0
X1	15.000	12.000	1069.000	1083.000	15.000	15.000	15.000	0.0	0.0	0.0
GR	701.400	1000.000	687.500	1069.000	684.300	1077.000	684.300	1078.000	684.500	1080.000
GR	686.800	1083.000	693.300	1100.000	694.900	1200.000	695.100	1300.000	699.500	1400.000
GR	700.300	1500.000	701.400	1600.000	0.0	0.0	0.0	0.0	0.0	0.0
NC	0.025	0.025	0.025	0.100	0.300	0.0	0.0	0.0	0.0	0.0
X1	25.000	28.000	1997.000	2004.000	10.000	10.000	10.000	0.0	0.0	0.0
GR	694.100	1000.000	694.600	1100.000	695.100	1200.000	695.500	1300.000	695.900	1400.000
GR	696.400	1500.000	696.800	1600.000	697.600	1800.000	698.100	1900.000	698.200	1950.000
GR	692.100	1960.000	690.800	1992.000	686.600	1997.000	685.700	1997.000	685.700	2004.000
GR	686.600	2004.000	687.300	2008.000	690.900	2041.000	692.000	2141.000	696.200	2241.000
GR	698.500	2341.000	699.200	2441.000	700.800	2480.000	700.900	2500.000	701.800	2700.000
GR	702.300	2800.000	703.000	2900.000	703.500	3000.000	0.0	0.0	0.0	0.0
SB	0.900	1.500	2.500	0.0	7.000	0.010	49.000	0.0	0.0	0.0
X1	212.000	0.0	0.0	0.0	187.000	187.000	187.000	0.0	0.0	0.0
X2	0.0	0.0	1.000	692.700	694.100	0.0	0.0	0.0	0.0	0.0
BT	20.000	1000.000	694.100	0.0	1100.000	694.600	0.0	1200.000	695.100	0.0
BT	1300.000	695.500	0.0	1400.000	695.900	0.0	1500.000	696.400	0.0	1600.000
BT	696.800	0.0	1800.000	697.600	0.0	1900.000	698.100	0.0	1997.000	698.600
BT	692.700	2004.000	698.600	692.700	2100.000	698.900	0.0	2200.000	699.400	0.0
BT	2300.000	700.000	0.0	2400.000	700.400	0.0	2500.000	700.900	0.0	2700.000
BT	701.800	0.0	2800.000	702.300	0.0	2900.000	703.000	0.0	3000.000	703.500
BT	0.0	0.0	0.0	0.0	0.0	0.0	0.0	0.0	0.0	0.0
NC	0.055	0.055	0.035	0.100	0.300	0.0	0.0	0.0	0.0	0.0
X1	237.000	13.000	1051.000	1067.000	25.000	25.000	25.000	0.0	1.100	0.0
GR	702.100	1000.000	691.000	1019.000	689.700	1051.000	685.100	1054.000	684.600	1059.000
GR	685.500	1063.000	686.200	1067.000	689.800	1100.000	690.900	1200.000	695.100	1300.000
GR	697.400	1400.000	698.100	1500.000	702.100	1600.000	0.0	0.0	0.0	0.0
X1	287.000	0.0	0.0	0.0	50.000	50.000	50.000	0.0	0.200	0.0
QT	5.000	378.000	738.000	927.000	1395.000	927.000	0.0	0.0	0.0	0.0

X1	825.000	12.000	1173.000	1193.000	538.000	538.000	538.000	0.0	0.0	0.0
GR	710.400	1000.000	698.400	1075.000	696.300	1100.000	695.500	1173.000	691.100	1180.000
GR	690.900	1185.000	691.100	1190.000	695.900	1195.000	695.500	1200.000	701.300	1300.000
GR	708.000	1400.000	710.400	1460.000	0.0	0.0	0.0	0.0	0.0	0.0
QT	5.000	334.000	650.000	817.000	1235.000	817.000	0.0	0.0	0.0	0.0
X1	4900.000	11.000	1275.000	1300.000	4075.000	4075.000	4075.000	0.0	-0.900	0.0
GR	755.300	1000.000	745.800	1100.000	739.200	1200.000	738.500	1275.000	734.000	1288.000
GR	733.800	1290.000	734.000	1293.000	739.000	1300.000	742.800	1400.000	751.100	1500.000
GR	755.300	1545.000	0.0	0.0	0.0	0.0	0.0	0.0	0.0	0.0
X1	4950.000	0.0	0.0	0.0	50.000	50.000	50.000	0.0	0.900	0.0
NC	0.025	0.025	0.025	0.100	0.300	0.0	0.0	0.0	0.0	0.0
X1	5000.000	21.000	1312.000	1313.000	50.000	50.000	50.000	0.0	0.0	0.0
GR	761.800	1000.000	757.500	1025.000	748.000	1125.000	741.400	1225.000	740.700	1300.000
GR	739.000	1312.000	737.700	1312.300	736.800	1313.000	736.200	1314.000	736.000	1315.000
GR	736.200	1316.000	736.800	1317.000	737.700	1317.700	739.000	1318.000	741.200	1325.000
GR	745.000	1425.000	749.000	1474.000	749.600	1500.000	753.700	1600.000	758.400	1700.000
GR	761.800	1760.000	0.0	0.0	0.0	0.0	0.0	0.0	0.0	0.0
SB	0.900	1.500	2.500	0.0	6.000	0.010	28.000	0.0	0.0	0.0
X1	5049.000	0.0	0.0	0.0	49.000	49.000	49.000	0.0	0.0	0.0
X2	0.0	0.0	1.000	742.000	747.100	0.0	0.0	0.0	0.0	0.0
BT	18.000	1000.000	761.800	0.0	1100.000	756.100	0.0	1200.000	750.700	0.0
BT	1300.000	747.400	0.0	1312.000	747.100	739.000	1312.300	747.100	740.300	1313.000
BT	747.100	741.200	1314.000	747.100	741.800	1315.000	747.100	742.000	1316.000	747.100
BT	741.800	1317.000	747.100	741.200	1317.700	747.100	740.300	1318.000	747.100	739.000
BT	1400.000	747.300	0.0	1500.000	745.600	0.0	1600.000	753.700	0.0	1700.000
BT	758.400	0.0	1760.000	761.800	0.0	0.0	0.0	0.0	0.0	0.0
NC	0.055	0.055	0.035	0.100	0.300	0.0	0.0	0.0	0.0	0.0
X1	5099.000	11.000	1275.000	1300.000	50.000	50.000	50.000	0.0	3.100	0.0
GR	755.300	1000.000	745.800	1100.000	739.200	1200.000	738.500	1275.000	734.000	1288.000
GR	733.800	1290.000	734.000	1293.000	739.000	1300.000	742.800	1400.000	751.100	1500.000
GR	755.300	1545.000	0.0	0.0	0.0	0.0	0.0	0.0	0.0	0.0
X1	5149.000	0.0	0.0	0.0	50.000	50.000	50.000	0.0	0.900	0.0
QT	5.000	172.000	356.000	461.000	734.000	461.000	0.0	0.0	0.0	0.0
X1	8300.000	9.000	1165.000	1183.000	3151.000	3151.000	3151.000	0.0	-3.000	0.0
GR	794.100	1000.000	783.600	1100.000	778.600	1165.000	776.200	1167.000	776.200	1169.000
GR	776.200	1172.000	779.300	1183.000	782.300	1200.000	794.100	1295.000	0.0	0.0
X1	8350.000	0.0	0.0	0.0	50.000	50.000	50.000	0.0	1.000	0.0
NC	0.025	0.025	0.025	0.100	0.300	0.0	0.0	0.0	0.0	0.0
X1	8400.000	21.000	1427.300	1432.800	50.000	50.000	50.000	0.0	0.0	0.0
GR	799.900	1000.000	797.500	1100.000	792.400	1200.000	788.500	1300.000	788.400	1308.000
GR	782.600	1361.000	778.000	1427.300	776.100	1428.000	775.400	1429.000	775.200	1430.000
GR	775.400	1431.000	776.100	1432.000	778.000	1432.800	778.300	1444.000	781.300	1461.000
GR	786.900	1507.000	789.600	1600.000	792.000	1700.000	794.500	1800.000	798.700	1900.000
GR	799.900	1930.000	0.0	0.0	0.0	0.0	0.0	0.0	0.0	0.0
SB	0.900	1.500	2.500	0.0	5.500	0.010	23.800	0.0	0.0	0.0
X1	8452.000	0.0	0.0	0.0	52.000	52.000	52.000	0.0	0.0	0.0
X2	0.0	0.0	1.000	780.700	785.700	0.0	0.0	0.0	0.0	0.0
BT	18.000	1000.000	799.900	0.0	1100.000	797.500	0.0	1200.000	792.400	0.0
BT	1300.000	788.500	0.0	1400.000	786.200	0.0	1427.300	785.700	778.000	1428.000
BT	785.700	779.800	1429.000	785.700	780.500	1430.000	785.700	780.700	1431.000	785.700
BT	780.500	1432.000	785.700	779.800	1432.800	785.700	778.000	1500.000	786.600	0.0
BT	1600.000	789.800	0.0	1700.000	792.000	0.0	1800.000	794.500	0.0	1900.000
BT	798.700	0.0	1930.000	799.900	0.0	0.0	0.0	0.0	0.0	0.0
NC	0.055	0.055	0.035	0.100	0.300	0.0	0.0	0.0	0.0	0.0
X1	8502.000	9.000	1165.000	1183.000	50.000	50.000	50.000	0.0	0.0	0.0

GR	794.100	1000.000	783.600	1100.000	776.600	1165.000	776.270	1167.000	776.200	1169.000
GR	776.200	1172.000	779.300	1183.000	782.300	1200.000	794.100	1295.000	0.0	0.0
X1	8552.000	0.0	0.0	0.0	50.090	50.000	50.000	0.0	1.000	0.0
EJ	0.0	0.0	0.0	0.0	0.0	0.0	0.0	0.0	0.0	0.0

CCHV= 0.100 CEHV= 0.300

3720 ASSUMED CRITICAL DEPTH

SECNO	DEPTH	CWSEL	CRISW	WSELK	EG	HV	HL	OLOSS	BANK ELEV
Q	QLOB	QCH	QROB	ALOB	ACH	AROB	VOL	TWA	LEFT/RIGHT
TIME	VLOB	VCH	VROB	XNL	XNCH	XNR	WTN	ELMIN	SSTA
SLOPE	XLOBL	XLCH	XLOBR	ITRIAL	IDC	ICONT	CORAR	TOPWID	ENDST
15.00	4.12	688.42	688.42	689.30	689.65	1.23	0.0	0.0	687.50
380.	4.	368.	9.	2.	41.	3.	0.	0.	686.80
0.0	1.77	9.05	2.51	0.055	0.035	0.055	0.0	684.30	1064.44
0.012488	15.	15.	15.	0	15	1	0.0	22.79	1087.23

CCHV= 0.100 CEHV= 0.300

3685 20 TRIALS USED WSEL,CWSEL.

7185 MIN SPECIFIC ENERGY

3720 ASSUMED CRITICAL DEPTH

SECNO	DEPTH	CWSEL	CRISW	WSELK	EG	HV	HL	OLOSS	BANK ELEV
Q	QLOB	QCH	QROB	ALOB	ACH	AROB	VOL	TWA	LEFT/RIGHT
TIME	VLOB	VCH	VROB	XNL	XNCH	XNR	WTN	ELMIN	SSTA
SLOPE	XLOBL	XLCH	XLOBR	ITRIAL	IDC	ICONT	CORAR	TOPWID	ENDST
25.00	3.53	689.23	689.23	0.0	690.12	0.88	0.08	0.0	686.60
380.	18.	218.	143.	4.	25.	26.	0.	0.	686.60
0.00	4.45	8.82	5.46	0.025	0.025	0.025	0.023	683.70	1993.86
0.005550	10.	10.	10.	30	15	1	0.0	31.86	2025.73

SPECIAL BRIDGE

5070 VARIABLE ELCHU OR ELCHD ON CARD SB NOT SPECIFIED

SB	XK	XKOR	COFQ	RDLN	BWC	BWP	BAREA	SS	ELCHU	ELCHD
	0.90	1.50	2.50	0.0	7.00	0.01	49.00	0.0	685.70	685.70

SECNO	DEPTH	CWSEL	CRISW	WSELK	EG	HV	HL	OLOSS	BANK ELEV
Q	QLOB	QCH	QROB	ALOB	ACH	AROB	VOL	TWA	LEFT/RIGHT
TIME	VLOB	VCH	VROB	XNL	XNCH	XNR	WTN	ELMIN	SSTA
SLOPE	XLOBL	XLCH	XLOBR	ITRIAL	IDC	ICONT	CORAR	TOPWID	ENDST

CLASS A LOW FLOW

BRIDGE W.S.= 689.25 BRIDGE VELOCITY= 15.33

EGPRS	EGLWC	H3	QWEIR	QPR	BAREA	ELLC	ELTRD	CLASS
0.0	690.12	0.01	0.	380.	49.	692.70	694.10	1.00

 HEC2 VERSION UPDATED JAN 1975
 ERROR CORRECTIONS 01,02,03,04,05,06,07,08
 MODIFICATIONS 52,53,54,55,56,57,58

T1 ROWAN COUNTY BASIN A STREAM 8
 T2 FLOODPLAIN STUDY AT ROWAN & DAVIDSON COUNTIES M-G JOB NO. 6918
 T3 50 YEAR FLOOD WATER SURFACE PROFILE

J1	ICHECK	INQ	NINV	IDIR	STRT	METRIC	HVINS	Q	WSEL	F0
	-10.	3.	0.	0.	0.026000	0.0	0.0	0.	690.300	0.0
J2	NPROF	IPLT	PRFVS	XSECV	XSECH	FN	ALLOC	IBW	CHNIM	ITRACE
	2.000	0.0	-1.000	0.0	0.0	0.0	0.0	0.0	0.0	0.0

CCHV= 0.100 CEHV= 0.300

3720 ASSUMED CRITICAL DEPTH

SECNO	DEPTH	CWSEL	CRWS	WSELK	EG	HV	HL	OLOSS	BANK ELEV
Q	QLOB	QCH	QROB	ALOB	ACH	AROB	VOL	TWA	LEFT/RIGHT
TIME	VLOB	VCH	VROB	XNL	XNCH	XNR	WTN	ELMIN	SSTA
SLOPE	XLOBL	XLCH	XLOBR	ITRIAL	IDC	ICONT	CORAR	TOPWID	ENDST
15.00	5.62	689.92	689.92	690.30	691.47	1.55	0.0	0.0	687.50
740.	44.	653.	44.	15.	62.	13.	0.	0.	686.80
0.0	3.00	10.59	3.44	0.055	0.035	0.055	0.0	684.30	1056.98
0.009727	15.	15.	15.	0	11	1	0.0	34.18	1091.16

CCHV= 0.100 CEHV= 0.300

IHC209I IBCOM - PROGRAM INTERRUPT (P) - DIVIDE CHECK OLO PSW IS FF7500F820A5F46 . REGISTER CONTAINED 3F22BE3000000000

TRACEBACK ROUTINE CALLED FROM ISN REG. 14 REG. 15 REG. 0 REG. 1
 MAIN 0001727A 0109C3C0 FD000008 001187F8

ENTRY POINT= 0109C3C0

STANDARD FIXUP TAKEN , EXECUTION CONTINUING

3301 HV CHANGED MORE THAN HVINS

25.00	5.35	691.05	690.29	0.0	691.62	0.56	0.04	0.10	686.60
740.	51.	282.	408.	13.	37.	82.	0.	0.	686.60
0.00	4.02	7.52	4.97	0.025	0.025	0.025	0.023	685.70	1985.71
0.002318	10.	10.	10.	11	11	1	0.0	69.42	2055.13

 HEC2 VERSION UPDATED JAN 1975
 ERROR CORRECTIONS 01,02,03,04,05,06,07,08
 MODIFICATIONS 52,53,54,55,56,57,58

T1 ROWAN COUNTY BASIN A STREAM 8
 T2 FLOODPLAIN STUDY AT ROWAN & DAVIDSON COUNTIES M-G JOB NO. 6918
 T3 100 YEAR FLOOD WATER SURFACE PROFILE

J1	ICHECK	INQ	NINV	IDIR	STRT	METRIC	HVINS	Q	WSEL	FG
	-10.	4.	0.	0.	0.026000	0.0	0.0	0.	692.300	0.0
J2	NPROF	IPLT	PRFVS	XSECV	XSECH	FM	ALLDC	IBW	CHNIM	ITRACE
	3.000	0.0	-1.000	0.0	0.0	0.0	0.0	0.0	0.0	0.0

CCHV= 0.100 CEHV= 0.300

3720 ASSUMED CRITICAL DEPTH

SECNO	DEPTH	WSEL	CRWS	WSELK	EG	HV	HL	LOSS	BANK ELEV
Q	QLOB	QCH	QROB	ALOB	ACH	AROB	VOL	TWA	LEFT/RIGHT
TIME	VLOB	VCH	VROB	XNL	XNCH	XNR	WTN	ELMIN	SSTA
SLOPE	XLOBL	XLCH	XLOBR	ITRIAL	IDC	ICONT	CORAR	TOPWID	ENDST
15.00	6.22	690.52	690.52	692.30	692.20	1.68	0.0	0.0	687.50
929.	76.	785.	68.	23.	70.	18.	0.	0.	686.80
0.0	3.38	11.21	3.76	0.055	0.035	0.055	0.0	684.30	1054.02
0.009257	15.	15.	15.	0	15	1	0.0	58.71	1092.73

CCHV= 0.100 CEHV= 0.300

3301 HV CHANGED MORE THAN HVINS

25.00	6.44	692.14	690.75	0.0	692.36	0.23	0.02	0.15	686.60
929.	91.	245.	593.	39.	45.	190.	0.	0.	686.60
0.00	2.33	5.44	3.13	0.025	0.025	0.025	0.023	685.70	1959.94
0.000949	10.	10.	10.	13	12	1	0.0	184.25	2144.19

SPECIAL BRIDGE

5070 VARIABLE ELCHU OR ELCHD ON CARD SB NOT SPECIFIED

SB	XK	XKOR	COFQ	RDLN	BWC	BWP	BAREA	SS	ELCHU	ELCHD
	0.90	1.50	2.50	0.0	7.00	0.01	49.00	0.0	685.70	685.70

CLASS A LOW FLOW

BRIDGE W.S.= 692.16 BRIDGE VELOCITY= 20.57

EGPRS EGLWC H3 QWEIR QPR BAREA ELLC ELTRD CLASS

 HEC2 VERSION UPDATED JAN 1975
 ERROR CORRECTIONS 01,02,03,04,05,06,07,08
 MODIFICATIONS 52,53,54,55,56,57,58

T1 ROWAN COUNTY BASIN A STREAM 8
 T2 FLOODPLAIN STUDY AT ROWAN & DAVIDSON COUNTIES M-G JOB NO. 6918
 T3 500 YEAR FLOOD WATER SURFACE PROFILE

J1 ICHECK INQ NINV IDIR STRT METRIC HVINS Q WSEL FQ
 -10. 5. 0. 0. 0.026000 0.0 0.0 0. 693.300 0.0

J2 NPROF IPILOT PRFVS XSECV XSECH FN ALLDC IBW CHNIM ITRACE
 15.000 0.0 -1.000 0.0 0.0 0.0 0.0 0.0 0.0 0.0

CCHV= 0.100 CEHV= 0.300

3720 ASSUMED CRITICAL DEPTH

SECNO	DEPTH	WSEL	CRWS	WSELK	EG	HV	HL	OLOSS	BANK ELEV
Q	QLOB	QCH	QROB	ALOB	ACH	AROB	VOL	TWA	LEFT/RIGHT
TIME	VLOB	VCH	VROB	XNL	XNCH	XNR	WTN	ELMIN	SSTA
SLOPE	XLOBL	XLCH	XLOBR	ITRIAL	IDC	ICONT	CORAR	TOPWID	ENDST
15.00	7.45	691.75	691.75	693.30	693.64	1.89	0.0	0.0	687.50
1397.	181.	1078.	138.	45.	87.	32.	0.	0.	686.80
0.0	4.04	12.36	4.33	0.055	0.035	0.055	0.0	684.30	1047.92
0.008404	15.	15.	15.	0	12	1	0.0	48.01	1095.94

CCHV= 0.100 CEHV= 0.300

3301 HV CHANGED MORE THAN HVINS

25.00	8.03	693.73	0.0	0.0	693.83	0.09	0.01	0.18	686.60
1397.	199.	204.	994.	100.	56.	443.	0.	0.	686.60
0.00	1.99	3.62	2.24	0.025	0.025	0.025	0.023	685.70	1957.33
0.000313	10.	10.	10.	4	0	1	0.0	224.78	2182.11

SPECIAL BRIDGE

5070, VARIABLE ELCHU OR ELCHD ON CARD SB NOT SPECIFIED

SB	XK	XKOR	COFO	RDLEN	BWC	BWP	BAREA	SS	ELCHU	ELCHD
	0.90	1.50	2.50	0.0	7.00	0.01	49.00	0.0	685.70	685.70

3265 DIVIDED FLOW

3280 CROSS SECTION 212.00 EXTENDED 1.82 FEET

SUMMARY PRINTOUT FOR MULTIPLE PROFILES

0
500 YEAR FLOOD WATER SUR

6.4.3 289.3

SECTION NUMBER	CHANNEL LENGTH	MIN EL OF ROADWAY	MAX EL OF LOW CHORD	MIN EL OF GROUND	DISCHARGE (CFS)	CWSEL	TQ	EG	TOPWID	STENCL	STENCR	VCH
A 15.00	15.00	0.0	0.0	684.30	380.00	688.42	34.00	689.65	22.79	0.0	0.0	9.05
A 15.00	15.00	0.0	0.0	684.30	740.00	689.92	74.80	691.47	34.18	0.0	0.0	10.59
A 15.00	15.00	0.0	0.0	684.30	929.00	690.52	96.55	692.20	36.71	0.0	0.0	11.21
A 15.00	15.00	0.0	0.0	684.30	1397.00	691.75	152.39	693.64	48.01	0.0	0.0	12.36
A 25.00	10.00	0.0	0.0	685.70	380.00	689.23	51.01	690.12	31.86	0.0	0.0	8.82
A 25.00	10.00	0.0	0.0	685.70	740.00	691.05	153.70	691.62	69.42	0.0	0.0	7.52
A 25.00	10.00	0.0	0.0	685.70	929.00	692.14	301.52	692.36	184.25	0.0	0.0	5.44
A 25.00	10.00	0.0	0.0	685.70	1397.00	693.73	789.01	693.83	224.78	0.0	0.0	3.62
212.00	187.00	694.10	692.70	685.70	380.00	689.24	51.24	690.12	31.93	0.0	0.0	8.79
212.00	187.00	694.10	692.70	685.70	740.00	691.05	153.68	691.62	69.40	0.0	0.0	7.52
212.00	187.00	694.10	692.70	685.70	929.00	692.14	302.16	692.36	184.33	0.0	0.0	5.43
212.00	187.00	694.10	692.70	685.70	1397.00	695.91	2161.84	695.93	684.19	0.0	0.0	1.55
237.00	25.00	0.0	0.0	685.70	380.00	689.73	48.80	690.29	37.53	0.0	0.0	6.53
237.00	25.00	0.0	0.0	685.70	740.00	691.03	96.50	691.75	66.78	0.0	0.0	7.77
237.00	25.00	0.0	0.0	685.70	929.00	692.04	168.31	692.46	180.81	0.0	0.0	6.44
237.00	25.00	0.0	0.0	685.70	1397.00	695.90	972.97	695.93	280.33	0.0	0.0	2.41
287.00	50.00	0.0	0.0	685.90	380.00	690.09	53.60	690.57	39.13	0.0	0.0	6.11
287.00	50.00	0.0	0.0	685.90	740.00	691.42	107.00	692.03	89.28	0.0	0.0	7.22
287.00	50.00	0.0	0.0	685.90	929.00	692.18	161.88	692.63	176.37	0.0	0.0	6.64
287.00	50.00	0.0	0.0	685.90	1397.00	695.91	913.18	695.94	275.39	0.0	0.0	2.53
825.00	538.00	0.0	0.0	690.90	378.00	694.10	50.19	695.31	17.89	0.0	0.0	8.83
825.00	538.00	0.0	0.0	690.90	738.00	696.31	92.07	697.20	114.00	0.0	0.0	7.84
825.00	538.00	0.0	0.0	690.90	927.00	696.75	121.84	697.59	126.85	0.0	0.0	7.98
825.00	538.00	0.0	0.0	690.90	1395.00	697.30	170.03	698.31	142.87	0.0	0.0	9.30
4900.00	4075.00	0.0	0.0	732.90	334.00	737.08	39.69	737.66	22.05	0.0	0.0	6.15
4900.00	4075.00	0.0	0.0	732.90	650.00	738.25	76.02	739.11	98.70	0.0	0.0	7.58
4900.00	4075.00	0.0	0.0	732.90	817.00	738.61	97.77	739.49	118.34	0.0	0.0	7.94
4900.00	4075.00	0.0	0.0	732.90	1235.00	739.26	150.36	740.17	145.10	0.0	0.0	8.69
4950.00	50.00	0.0	0.0	733.80	334.00	737.29	26.49	738.36	19.11	0.0	0.0	8.32
4950.00	50.00	0.0	0.0	733.80	650.00	739.11	74.22	740.00	95.72	0.0	0.0	7.70
4950.00	50.00	0.0	0.0	733.80	817.00	739.57	101.67	740.39	120.69	0.0	0.0	7.71
4950.00	50.00	0.0	0.0	733.80	1235.00	740.18	152.09	741.07	145.85	0.0	0.0	8.62
5000.00	50.00	0.0	0.0	736.00	334.00	741.33	59.05	741.82	95.91	0.0	0.0	6.94
5000.00	50.00	0.0	0.0	736.00	650.00	741.88	109.34	742.38	125.17	0.0	0.0	7.86
5000.00	50.00	0.0	0.0	736.00	817.00	742.06	132.29	742.61	132.79	0.0	0.0	8.36
5000.00	50.00	0.0	0.0	736.00	1235.00	742.41	183.86	743.08	147.14	0.0	0.0	9.48
5049.00	49.00	747.10	742.00	736.00	334.00	741.33	59.15	741.82	96.14	0.0	0.0	6.93
5049.00	49.00	747.10	742.00	736.00	650.00	747.99	2949.24	747.99	536.52	0.0	0.0	0.49
5049.00	49.00	747.10	742.00	736.00	817.00	748.32	3258.23	748.32	344.12	0.0	0.0	0.57
5049.00	49.00	747.10	742.00	736.00	1235.00	748.91	3851.34	748.92	357.66	0.0	0.0	0.75

NCSR
49.49

SECTION NUMBER	CHANNEL LENGTH	MIN EL OF ROADWAY	MAX EL OF LOW CHORD	MIN EL OF GROUND	DISCHARGE (CFS)	CWSEL	TQ	EG	TOPWID	STENCL	STENCR	VCH
4979 5099.00	50.00	0.0	0.0	736.90	334.00	741.62	52.69	742.01	26.76	0.0	0.0	4.99
5099.00	50.00	0.0	0.0	736.90	650.00	747.99	1208.37	747.99	311.34	0.0	0.0	0.93
5099.00	50.00	0.0	0.0	736.90	817.00	748.32	1333.28	748.32	320.30	0.0	0.0	1.09
5099.00	50.00	0.0	0.0	736.90	1235.00	748.91	1574.25	748.92	336.31	0.0	0.0	1.45
5149.00	50.00	0.0	0.0	737.80	334.00	741.66	33.22	742.42	20.70	0.0	0.0	7.03
5099 5149.00	50.00	0.0	0.0	737.80	650.00	747.99	901.56	748.00	286.89	0.0	0.0	1.17
5149.00	50.00	0.0	0.0	737.80	817.00	748.32	1008.28	748.33	295.85	0.0	0.0	1.35
5149.00	50.00	0.0	0.0	737.80	1235.00	748.91	1216.16	748.93	311.91	0.0	0.0	1.76
8300.00	3151.00	0.0	0.0	773.20	172.00	775.77	15.53	776.30	18.31	0.0	0.0	6.30
8300.00	3151.00	0.0	0.0	773.20	356.00	776.66	31.99	777.61	33.82	0.0	0.0	7.97
8300.00	3151.00	0.0	0.0	773.20	461.00	777.10	44.09	778.10	41.96	0.0	0.0	8.38
8300.00	3151.00	0.0	0.0	773.20	734.00	777.94	75.44	779.08	57.78	0.0	0.0	9.29
8350.00	50.00	0.0	0.0	774.20	172.00	776.55	12.89	777.36	15.32	0.0	0.0	7.19
8350.00	50.00	0.0	0.0	774.20	356.00	777.66	32.02	778.61	33.84	0.0	0.0	7.96
8350.00	50.00	0.0	0.0	774.20	461.00	778.10	44.21	779.10	42.03	0.0	0.0	8.36
8350.00	50.00	0.0	0.0	774.20	734.00	778.95	75.87	780.08	57.96	0.0	0.0	9.25
8400.00	50.00	0.0	0.0	775.20	172.00	779.06	25.45	779.52	36.22	0.0	0.0	6.38
8400.00	50.00	0.0	0.0	775.20	356.00	779.68	48.87	780.29	48.83	0.0	0.0	7.77
8400.00	50.00	0.0	0.0	775.20	461.00	779.91	60.13	780.62	53.35	0.0	0.0	8.50
8400.00	50.00	0.0	0.0	775.20	734.00	780.49	96.85	781.30	64.95	0.0	0.0	9.20
8452.00	52.00	785.70	780.70	775.20	172.00	779.06	25.51	779.52	36.27	0.0	0.0	6.37
8452.00	52.00	785.70	780.70	775.20	356.00	779.69	49.02	780.29	48.89	0.0	0.0	7.75
8452.00	52.00	785.70	780.70	775.20	461.00	779.91	60.36	780.62	53.43	0.0	0.0	8.48
8452.00	52.00	785.70	780.70	775.20	734.00	787.16	1927.23	787.17	196.37	0.0	0.0	0.84
8502.00	50.00	0.0	0.0	776.20	172.00	779.48	27.73	779.74	30.49	0.0	0.0	4.22
8502.00	50.00	0.0	0.0	776.20	356.00	779.94	39.83	780.64	39.28	0.0	0.0	6.92
8502.00	50.00	0.0	0.0	776.20	461.00	780.09	44.05	781.10	41.93	0.0	0.0	8.38
8502.00	50.00	0.0	0.0	776.20	734.00	787.15	849.94	787.17	172.92	0.0	0.0	1.60
8552.00	50.00	0.0	0.0	777.20	172.00	779.55	12.89	780.36	15.32	0.0	0.0	7.19
8552.00	50.00	0.0	0.0	777.20	356.00	780.66	31.91	781.61	33.76	0.0	0.0	7.98
8552.00	50.00	0.0	0.0	777.20	461.00	781.10	44.21	782.10	42.03	0.0	0.0	8.36
8552.00	50.00	0.0	0.0	777.20	734.00	787.15	645.52	787.18	155.38	0.0	0.0	1.96

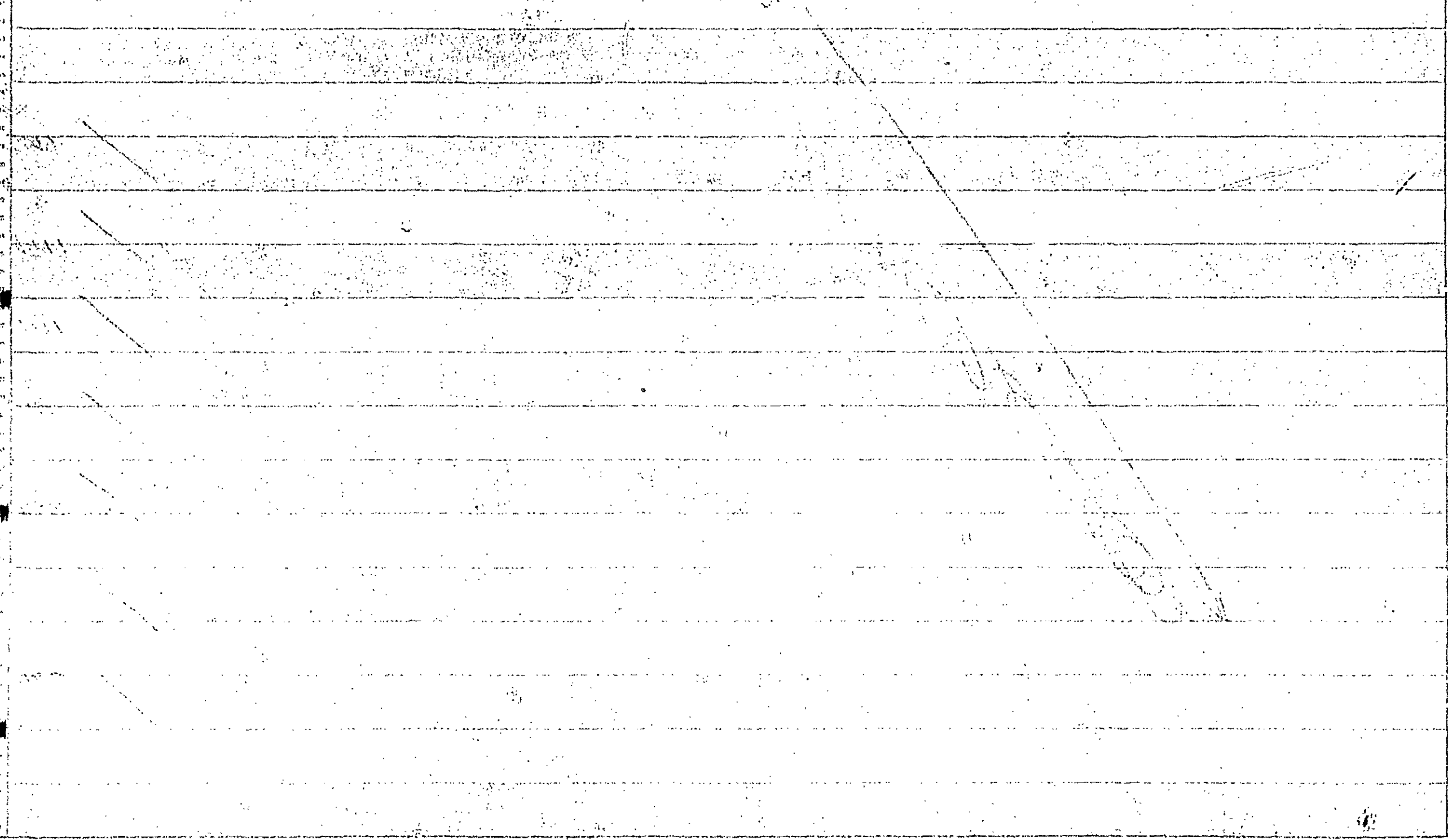
SECTION NUMBER	DISCHARGE CFS	CWSEL	CWSEL DIFF EACH Q	CWSEL DIFF EACH SECTION	CWSEL-WSELK	TOPWID	T.W. DIFF	LENGTH
15.000	380.000	688.418	0.0	0.0	0.0	22.793	0.0	15.000
15.000	740.000	689.920	1.503	0.0	0.0	34.131	-11.388	15.000
15.000	929.000	690.518	0.598	0.0	0.0	38.711	-15.918	15.000
15.000	1397.000	691.746	1.228	0.0	0.0	48.013	-25.220	15.000
25.000	380.000	689.233	0.0	0.815	0.0	31.865	0.0	10.000
25.000	740.000	691.052	1.819	1.132	0.0	69.415	-37.551	10.000
25.000	929.000	692.137	1.084	1.619	0.0	184.252	-152.387	10.000
25.000	1397.000	693.732	1.595	1.986	0.0	224.775	-192.911	10.000
212.000	380.000	689.239	0.0	0.006	0.0	31.930	0.0	187.000
212.000	740.000	691.054	1.815	0.002	0.0	69.397	-37.467	187.000
212.000	929.000	692.137	1.083	0.0	0.0	184.329	-152.398	187.000
212.000	1397.000	695.909	3.773	2.178	0.0	684.186	-652.255	187.000
237.000	380.000	689.726	0.0	0.486	0.0	37.530	0.0	25.000

257.000	740.000	691.051	1.306	-0.023	0.0	66.777	-29.248	25.000
257.000	929.000	692.045	1.014	-0.092	0.0	180.805	-143.276	25.000
237.000	1397.000	695.098	3.053	-0.011	0.0	280.335	-242.805	25.000
287.000	300.000	690.087	0.0	0.361	0.0	39.129	0.0	50.000
287.000	740.000	691.420	1.334	0.389	0.0	89.279	-50.150	50.000
287.000	929.000	692.180	0.739	0.135	0.0	176.373	-137.243	50.000
287.000	1397.000	695.905	3.726	0.007	0.0	275.390	-236.261	50.000
825.000	378.000	694.055	0.0	4.009	0.0	17.888	0.0	538.000
825.000	738.000	696.307	2.211	4.086	0.0	114.000	-96.112	538.000
828.000	927.000	696.747	0.441	4.568	0.0	126.852	-108.963	538.000
825.000	1395.000	697.297	0.549	1.391	0.0	142.869	-124.981	538.000
4900.000	334.000	737.076	0.0	42.981	0.0	22.052	0.0	4075.000
4900.000	650.000	738.250	1.174	41.943	0.0	98.705	-76.633	4075.000
4900.000	817.000	738.614	0.364	41.867	0.0	118.337	-96.285	4075.000
4900.000	1235.000	739.260	0.646	41.963	0.0	145.097	-123.045	4075.000
4950.000	334.000	737.289	0.0	0.213	0.0	19.108	0.0	50.000
4950.000	650.000	739.112	1.824	0.863	0.0	93.716	-74.609	50.000
4950.000	817.000	739.571	0.459	0.957	0.0	120.686	-101.578	50.000
4950.000	1235.000	740.178	0.607	0.910	0.0	145.846	-126.738	50.000
5000.000	334.000	741.329	0.0	4.041	0.0	95.910	0.0	50.000
5000.000	650.000	741.879	0.550	2.767	0.0	125.174	-29.264	50.000
5000.000	817.000	742.063	0.184	2.492	0.0	132.796	-36.677	50.000
5000.000	1235.000	742.409	0.346	2.231	0.0	147.141	-51.891	50.000
5049.000	334.000	741.331	0.0	0.002	0.0	96.138	0.0	49.000
5049.000	650.000	747.989	6.658	6.109	0.0	336.522	-240.385	49.000
5049.000	817.000	748.319	0.331	6.256	0.0	344.118	-247.980	49.000
5049.000	1235.000	748.911	0.592	6.502	0.0	357.658	-261.520	49.000
5099.000	334.000	741.621	0.0	0.289	0.0	26.757	0.0	50.000
5099.000	650.000	747.987	6.366	-0.002	0.0	311.342	-284.584	50.000
5099.000	817.000	748.317	0.330	-0.003	0.0	320.300	-293.542	50.000
5099.000	1235.000	748.907	0.590	-0.004	0.0	336.310	-309.552	50.000
5149.000	334.000	741.656	0.0	0.036	0.0	20.697	0.0	50.000
5149.000	650.000	747.986	6.329	-0.001	0.0	286.887	-266.190	50.000
5149.000	817.000	748.315	0.330	-0.001	0.0	295.852	-275.155	50.000
5149.000	1235.000	748.906	0.590	-0.001	0.0	311.923	-291.218	50.000
8300.000	172.000	775.767	0.3	34.111	0.0	19.310	0.0	3151.000
8300.000	356.000	776.659	0.893	28.674	0.0	33.822	-15.511	3151.000
8300.000	461.000	777.095	0.436	28.780	0.0	41.961	-23.651	3151.000
8300.000	734.000	777.942	0.847	29.037	0.0	57.779	-39.469	3151.000
8350.000	172.000	776.554	0.0	0.788	0.0	15.320	0.0	50.000
8350.000	356.000	777.660	1.106	1.001	0.0	33.844	-18.524	50.000
8350.000	461.000	778.099	0.438	1.003	0.0	42.029	-26.709	50.000
8350.000	734.000	778.952	0.854	1.010	0.0	57.961	-42.641	50.000
8400.000	172.000	779.056	0.0	2.502	0.0	36.221	0.0	50.000
8400.000	356.000	779.684	0.623	2.023	0.0	48.826	-12.604	50.000
8400.000	461.000	779.909	0.226	1.811	0.0	53.346	-17.125	50.000
8400.000	734.000	780.487	0.578	1.535	0.0	64.955	-28.734	50.000
8452.000	172.000	779.059	0.0	0.003	0.0	36.235	0.0	52.000
8452.000	356.000	779.688	0.629	0.004	0.0	48.889	-12.624	52.000
8452.000	461.000	779.913	0.226	0.004	0.0	53.429	-17.164	52.000
8452.000	734.000	787.159	7.246	6.672	0.0	196.370	-160.104	52.000
8502.000	172.000	779.476	0.0	0.418	0.0	30.493	0.0	50.000
8502.000	356.000	779.944	0.468	0.257	0.0	39.278	-8.785	50.000

8502.000	461.000	780.094	0.149	0.181	0.0	41.934	-11.441	50.000
8502.000	734.000	787.152	7.059	-0.007	0.0	172.917	-142.424	50.000
8552.000	172.000	779.555	0.0	0.079	0.0	15.322	0.0	50.000
8552.000	356.000	780.656	1.101	0.712	0.0	33.762	-18.441	50.000
8552.000	461.000	781.099	0.443	1.005	0.0	42.029	-26.708	50.000
8552.000	734.000	787.149	6.051	-0.003	0.0	155.382	-140.060	50.000

DATA FOR LAST CROSS SECTION

PROFILE	TYPE ENC	TARGET	TOP WIDTH AREA-ACRES	TOP WIDTH AREA-DIFF
1	0.0	0.0	4.290	0.0
2	0.0	0.0	24.691	20.400
3	0.0	0.0	28.241	23.951
4	0.0	0.0	34.084	29.794



 HEC2 VERSION UPDATED JAN 1975
 ERROR CORRECTIONS 01,02,03,04,05,06,07,08
 MODIFICATIONS 52,53,54,55,56,57,58

C
 1 ROWAN COUNTY BASIN G STREAM B
 T2 FLOODPLAIN STUDY AT ROWAN & DAVIDSON COUNTIES M-G JOB NO. 6918
 T3 10 YEAR FLOOD WATER SURFACE PROFILE

J1	ICHECK	ING	NINV	IDIR	STRT	METRIC	HVINS	Q	WSEL	EQ	
	-1.	2.	0.	0.	0.010000	0.0	0.0	0.	749.500	0.0	
J2	NPROF	IPLT	PRFVS	XSECV	XSECH	FN	ALLOC	IBW	CHNIM	ITRACE	
	0.0	0.0	-1.000	0.0	0.0	0.0	0.0	0.0	0.0	0.0	
J3	1.000	34.000	3.000	4.000	27.000	28.000	26.000	0.0	0.0	0.0	
NC	0.055	0.055	0.035	0.100	0.300	0.0	0.0	0.0	0.0	0.0	
QT	5.000	498.000	894.000	1093.000	1571.000	1093.000	0.0	0.0	0.0	0.0	
ET	5.000	0.0	0.0	0.0	0.0	-10.400	0.0	0.0	0.0	0.0	
X1	1300.000	14.000	1448.000	1458.000	1300.000	1300.000	1300.000	0.0	-0.500	0.0	
GR	766.200	1000.000	761.000	1100.000	756.900	1200.000	752.200	1300.000	750.000	1332.000	
GR	749.400	1400.000	748.500	1448.000	745.200	1451.000	745.000	1453.000	745.400	1455.000	
GR	749.200	1458.000	748.300	1623.000	756.400	1653.000	764.400	1714.000	0.0	0.0	
X1	1350.000	0.0	0.0	0.0	50.000	50.000	50.000	0.0	0.100	0.0	
NC	0.025	0.025	0.025	0.100	0.300	0.0	0.0	0.0	0.0	0.0	
X1	1400.000	15.000	1493.000	1509.000	50.000	50.000	50.000	0.0	0.0	0.0	
GR	766.100	1000.000	761.300	1100.000	756.700	1200.000	753.000	1300.000	752.000	1348.000	
GR	749.800	1380.000	749.200	1448.000	748.300	1493.000	744.800	1493.000	744.800	1509.000	
GR	745.300	1509.000	748.100	1671.000	757.900	1700.000	764.600	1800.000	766.100	1828.000	
SB	0.900	1.500	2.500	0.0	12.000	0.010	34.600	0.0	0.0	0.0	
X1	1440.000	0.0	0.0	0.0	40.000	40.000	40.000	0.0	0.0	0.0	
X2	0.0	0.0	1.000	748.300	0.0	0.0	0.0	0.0	0.0	0.0	
BT	24.000	1000.000	766.100	0.0	1100.000	761.300	0.0	1200.000	756.700	0.0	
BT	1300.000	753.000	0.0	1400.000	751.100	0.0	1493.000	750.800	745.300	1493.200	
BT	750.800	746.400	1494.000	750.800	747.600	1496.000	750.800	748.300	1498.000	750.800	
BT	747.600	1498.800	750.800	746.600	1499.000	750.800	744.800	1503.000	750.900	744.800	
BT	1503.200	750.900	746.400	1504.000	750.900	747.600	1506.000	750.900	748.300	1508.000	
BT	750.900	747.600	1508.800	750.900	746.400	1509.000	750.900	745.300	1550.000	751.400	
BT	0.0	1800.000	752.900	0.0	1700.000	757.900	0.0	1800.000	764.600	0.0	
BT	1828.000	766.100	0.0	0.0	0.0	0.0	0.0	0.0	0.0	0.0	
NC	0.055	0.055	0.035	0.100	0.300	0.0	0.0	0.0	0.0	0.0	
X1	1490.000	14.000	1448.000	1458.000	50.000	50.000	50.000	0.0	-0.100	0.0	
GR	766.200	1000.000	761.000	1100.000	756.900	1200.000	752.200	1300.000	750.000	1332.000	
GR	749.400	1400.000	748.500	1448.000	745.200	1451.000	745.000	1453.000	745.400	1455.000	
GR	749.200	1458.000	748.300	1623.000	758.400	1653.000	764.400	1714.000	0.0	0.0	
X1	1540.000	0.0	0.0	0.0	50.000	50.000	50.000	0.0	0.100	0.0	
QT	5.000	134.000	278.000	363.000	584.000	363.000	0.0	0.0	0.0	0.0	

 HEC2 VERSION UPDATED JAN 1975
 ERROR CORRECTIONS 01,02,03,04,05,06,07,08
 MODIFICATIONS 52,53,54,55,56,57,58

T1 ROWAN COUNTY BASIN G STREAM B
 T2 FLOODPLAIN STUDY AT ROWAN & DAVIDSON COUNTIES M-G JOB NO. 6718
 T3 50 YEAR FLOOD WATER SURFACE PROFILE

J1	ICHECK	INQ	NINV	IDIR	STRT	METRIC	HVINS	Q	WSEL	FG
	-10.	3.	0.	0.	0.010000	0.0	0.0	0.	750.500	0.0
J2	NPROF	IPLT	PREVS	XSECV	XSECH	FN	ALLOC	IBW	CHNIM	ITRACE
	2.000	0.0	-1.000	0.0	0.0	0.0	0.0	0.0	0.0	0.0

CCHV= 0.100 CEHV= 0.300

SECNO	DEPTH	CWSEL	CRWS	WSELK	EG	HV	HL	OLOSS	BANK ELEV
Q	QLOB	QCH	QROB	ALOB	ACH	AROB	VOL	TWA	LEFT/RIGHT
TIME	VLOB	VCH	VROB	XLN	XNCH	XNR	WTN	ELMIN	SBTA
SLOPE	XLOBL	XLCH	XLOBR	ITRIAL	IDC	ICONT	CORAR	TOPWID	ENDST

1300.00	4.81	749.31	0.0	750.50	749.71	0.40	0.0	0.0	748.00
894.	110.	284.	500.	51.	35.	178.	0.	0.	748.70
0.0	2.17	8.11	2.80	0.055	0.035	0.055	0.0	744.50	1353.60
0.010065	1300.	1300.	1300.	0	0	6	0.0	273.88	1627.48

1350.00	5.27	749.87	0.0	0.0	750.01	0.14	0.27	0.03	748.10
894.	162.	202.	530.	103.	40.	257.	0.	0.	748.80
0.01	1.58	5.10	2.06	0.055	0.035	0.055	0.034	744.60	1328.07
0.003379	50.	50.	50.	2	0	1	0.0	300.79	1628.85

CCHV= 0.100 CEHV= 0.300

1400.00	5.21	750.01	0.0	0.0	750.03	0.02	0.01	0.01	745.30
894.	140.	126.	628.	159.	83.	542.	1.	1.	745.30
0.02	0.88	1.52	1.16	0.025	0.025	0.025	0.029	744.80	1376.95
0.000078	50.	50.	50.	2	0	1	0.0	299.71	1676.65

SPECIAL BRIDGE

5070, VARIABLE ELCHU OR ELCHD ON CARD SB NOT SPECIFIED

SB	XK	XKOR	COFQ	RLEN	BWC	BWP	BAREA	SS	ELCHU	ELCHD
	0.90	1.50	2.50	0.0	12.00	0.01	34.60	0.0	744.80	744.80

PRESSURE AND WEIR FLOW

 HEC2 VERSION UPDATED JAN 1975
 ERROR CORRECTIONS 01,02,03,04,05,06,07,08
 MODIFICATIONS 52,53,54,55,56,57,58

T1 ROWAN COUNTY BASIN G STREAM B
 T2 FLOODPLAIN STUDY AT ROWAN & DAVIDSON COUNTIES M-G JOB NO. 6918
 T3 100 YEAR FLOOD WATER SURFACE PROFILE

J1	ICHECK	INO	NINV	IDIR	STRT	METRIC	HVINS	Q	WSEL	FO
	-10.	4.	0.	0.	0.010000	0.0	0.0	0.	752.500	0.0

J2	NPROF	IPLT	PRFVS	XSECV	XSECH	FN	ALLOC	IRW	CHNIM	ITRACE
	3.000	0.0	-1.000	0.0	0.0	0.0	0.0	0.0	0.0	0.0

CCHV= 0.100 CEHV= 0.300

SECNO	DEPTH	CWSEL	CRWS	WSELK	EG	HV	HL	QLOSS	BANK ELEV
Q	QLOB	QCH	QROB	ALOB	ACH	AROB	VOL	TWA	LEFT/RIGHT
TIME	VLOB	VCH	VROB	XNL	XNCH	XNR	WTN	ELMIN	SSTA
SLOPE	XLOBL	XLCH	XLOBR	ITRIAL	IDC	ICONT	CORAR	TOPMID	ENCSY

1300.00	4.97	749.47	0.0	752.50	749.87	0.40	0.0	0.0	748.00
1093.	156.	305.	632.	68.	37.	206.	0.	0.	748.70
0.0	2.31	6.32	3.07	0.055	0.035	0.055	0.0	744.50	1355.22
0.009988	1300.	1300.	1300.	0	0	6	0.0	292.75	1627.97

1350.00	5.42	750.02	0.0	0.0	750.18	0.15	0.29	0.02	748.10
1093.	217.	225.	651.	121.	41.	283.	0.	0.	748.80
0.00	1.79	5.47	2.30	0.055	0.035	0.055	0.034	744.60	1325.83
0.003697	50.	50.	50.	2	0	1	0.0	303.48	1629.31

CCHV= 0.100 CEHV= 0.300

1400.00	5.38	750.18	0.0	0.0	750.21	0.03	0.01	0.01	745.30
1093.	179.	149.	764.	179.	86.	570.	1.	1.	745.30
0.02	1.00	1.73	1.34	0.025	0.025	0.025	0.029	744.80	1374.51
0.000098	50.	50.	50.	2	0	1	0.0	302.64	1677.15

SPECIAL BRIDGE

5070, VARIABLE ELCHU OR ELCHD ON CARD SB NOT SPECIFIED

SB	XK	XKOR	COFO	ROLEN	BWC	BWP	BAREA	SS	ELCHU	ELCHD
	0.90	1.50	2.50	0.0	12.00	0.01	34.60	0.0	744.00	744.80

PRESSURE AND WEIR FLOW

EGPRS EGLWC H3 QWEIR QPR BAREA ELLC ELTRD CLASS

 HEC2 VERSION UPDATED JAN 1975
 ERROR CORRECTIONS 01,02,03,04,05,06,07,08
 MODIFICATIONS 52,53,54,55,56,57,58

T1 ROWAN COUNTY BASIN 6 STREAM 8
 T2 FLOODPLAIN STUDY AT ROWAN & DAVIDSON COUNTIES M-G JOB NO. 6918
 T3 500 YEAR FLOOD WATER SURFACE PROFILE

J1 ICHECK INQ NINV IDIR STRT METRIC HVINS Q WSEL FQ
 -10. 5. 0. 0. 0.010000 0.0 0.0 0. 753.500 0.0

J2 NPROF IPLOT PREVS XSECV XSECH FN ALLDC IBW CHNIM ITRACE
 15.000 0.0 -1.000 0.0 0.0 0.0 0.0 0.0 0.0 0.0

CCHV= 0.100 CEHV= 0.300

SECNO	DEPTH	CHSEL	CRIMS	WSELK	EG	HV	HL	GLOSS	BANK ELEV
Q	QLOB	QCH	QNOB	ALOB	ACH	AROB	VOL	TWA	LEFT/RIGHT
TIME	VLOS	VCH	VROB	XNL	XNCH	XNR	MTN	ELMIN	BETA
SLOPE	XLOBL	XLCH	XLROB	ITRIAL	IDC	ICONT	CORAR	TOPWID	ENDBT

1300.00	5.29	749.79	0.0	753.50	750.20	0.41	0.0	0.0	748.00
1571.	288.	351.	982.	185.	40.	260.	0.	0.	748.70
0.0	2.79	0.00	3.54	0.055	0.035	0.055	0.0	744.50	1327.76
0.009981	1300.	1300.	1300.	0	0	6	0.0	301.16	1628.92

1350.00	5.74	750.34	0.0	0.0	750.53	0.19	0.31	0.02	748.10
1571.	387.	278.	939.	161.	44.	387.	1.	0.	748.80
0.00	2.22	6.20	2.78	0.055	0.035	0.055	0.054	744.60	1321.23
0.004304	50.	50.	50.	2	0	1	0.0	309.02	1630.25

CCHV= 0.100 CEHV= 0.300

1400.00	5.72	750.52	0.0	0.0	750.57	0.05	0.02	0.01	745.30
1571.	283.	201.	1087.	221.	92.	628.	1.	1.	745.30
0.01	1.28	2.19	1.73	0.025	0.025	0.025	0.029	744.80	1369.48
0.000144	50.	50.	50.	2	0	1	0.0	308.69	1678.17

SPECIAL BRIDGE

5070, VARIABLE ELCHU OR ELCHD ON CARD SB NOT SPECIFIED

SB	XK	XKOR	COFQ	ROLEN	BWC	BWP	BARCA	SS	ELCHU	ELCHD
0.90	1.50	2.50	0.0	12.00	0.01	34.60	0.0	744.80	744.80	

PRESSURE AND WEIR FLOW

EGPRS EGLWC H3 QWEIR QPR BAREA ELLC ELTRD CLASS

SUMMARY PRINTOUT FOR MULTIPLE PROFILES

500 YEAR FLOOD WATER SUR

SECTION NUMBER	CHANNEL LENGTH	MIN EL OF ROADWAY	MAX EL OF LOW CHORD	MIN EL OF GROUND	DISCHARGE (CFS)	CWSEL	TQ	EG	TOPWID	STENCL	STENCR	VCH	
9	1300.00	1300.00	0.0	0.0	744.50	495.00	749.00	56.04	749.32	237.59	0.0	0.0	6.61
10	1300.00	1300.00	0.0	0.0	744.50	894.00	749.31	89.11	749.71	273.88	0.0	0.0	8.11
11	1300.00	1300.00	0.0	0.0	744.50	1093.00	749.47	109.37	749.87	292.75	0.0	0.0	8.32
12	1300.00	1300.00	0.0	0.0	744.50	1571.00	749.79	157.25	750.20	301.16	0.0	0.0	8.80
14	1350.00	50.00	0.0	0.0	744.60	495.00	749.44	93.33	749.56	278.00	0.0	0.0	4.31
15	1350.00	50.00	0.0	0.0	744.60	894.00	749.87	153.80	750.01	300.79	0.0	0.0	5.10
16	1350.00	50.00	0.0	0.0	744.60	1093.00	750.02	179.77	750.18	303.40	0.0	0.0	5.47
17	1350.00	50.00	0.0	0.0	744.60	1571.00	750.34	239.45	750.53	309.02	0.0	0.0	6.20
19	1400.00	50.00	0.0	0.0	744.80	495.00	749.56	790.00	749.57	268.51	0.0	0.0	1.01
20	1400.00	50.00	0.0	0.0	744.80	894.00	750.01	1011.94	750.03	299.71	0.0	0.0	1.52
21	1400.00	50.00	0.0	0.0	744.80	1093.00	750.18	1104.21	750.20	302.64	0.0	0.0	1.73
22	1400.00	50.00	0.0	0.0	744.80	1571.00	750.52	1308.75	750.57	308.69	0.0	0.0	2.19
24	1440.00	40.00	750.80	748.30	744.80	495.00	751.57	2040.06	751.57	327.07	0.0	0.0	0.50
25	1440.00	40.00	750.80	748.30	744.80	894.00	752.18	2539.98	752.18	343.86	0.0	0.0	9.76
26	1440.00	40.00	750.80	748.30	744.80	1093.00	752.41	2747.81	752.42	355.79	0.0	0.0	0.88
27	1440.00	40.00	750.80	748.30	744.80	1571.00	752.95	3167.61	752.87	378.48	0.0	0.0	1.14
29	1490.00	50.00	0.0	0.0	744.90	495.00	751.07	461.43	751.57	325.38	0.0	0.0	1.15
30	1490.00	50.00	0.0	0.0	744.90	894.00	752.17	640.08	752.19	336.51	0.0	0.0	1.61
31	1490.00	50.00	0.0	0.0	744.90	1093.00	752.40	716.61	752.42	342.16	0.0	0.0	1.80
32	1490.00	50.00	0.0	0.0	744.90	1571.00	752.89	873.97	752.88	352.97	0.0	0.0	2.23
34	1540.00	50.00	0.0	0.0	745.00	495.00	751.57	435.35	751.58	323.68	0.0	0.0	1.21
35	1540.00	50.00	0.0	0.0	745.00	894.00	752.18	610.17	752.20	334.32	0.0	0.0	1.67
36	1540.00	50.00	0.0	0.0	745.00	1093.00	752.41	685.39	752.43	339.89	0.0	0.0	1.87
37	1540.00	50.00	0.0	0.0	745.00	1571.00	752.86	840.60	752.89	350.76	0.0	0.0	2.29
40	4100.00	2560.00	0.0	0.0	771.10	134.00	774.19	9.38	775.13	9.94	0.0	0.0	7.78
41	4100.00	2560.00	0.0	0.0	771.10	278.00	775.32	30.65	775.80	104.43	0.0	0.0	6.57
42	4100.00	2560.00	0.0	0.0	771.10	363.00	775.51	38.83	776.01	116.68	0.0	0.0	7.09
43	4100.00	2560.00	0.0	0.0	771.10	584.00	775.93	62.41	776.44	143.79	0.0	0.0	7.78
44	4150.00	50.00	0.0	0.0	771.20	134.00	775.33	27.51	775.47	99.03	0.0	0.0	3.45
45	4150.00	50.00	0.0	0.0	771.20	278.00	775.89	54.29	776.04	135.42	0.0	0.0	4.14
46	4150.00	50.00	0.0	0.0	771.20	363.00	776.11	68.51	776.28	149.04	0.0	0.0	4.48
47	4150.00	50.00	0.0	0.0	771.20	584.00	776.53	102.78	776.72	165.17	0.0	0.0	5.19
49	4200.00	50.00	0.0	0.0	771.40	134.00	775.43	31.52	775.58	92.43	0.0	0.0	4.36
50	4200.00	50.00	0.0	0.0	771.40	278.00	776.03	81.34	776.13	131.18	0.0	0.0	3.89
51	4200.00	50.00	0.0	0.0	771.40	363.00	776.26	109.28	776.37	146.03	0.0	0.0	3.92
52	4200.00	50.00	0.0	0.0	771.40	584.00	776.69	178.66	776.81	163.67	0.0	0.0	4.11
53	4237.00	37.00	777.50	774.90	771.40	134.00	777.86	477.96	777.86	250.48	0.0	0.0	0.41
54	4237.00	37.00	777.50	774.90	771.40	278.00	778.31	646.38	778.31	277.01	0.0	0.0	0.66
55	4237.00	37.00	777.50	774.90	771.40	363.00	778.48	721.21	778.49	284.86	0.0	0.0	0.78
56	4237.00	37.00	777.50	774.90	771.40	584.00	778.82	882.01	778.83	300.25	0.0	0.0	1.06

A

B

4237

4282

4332

4350

4369

1
2
3
4
5
6
7
8
9
10
11
12
13
14
15
16
17
18
19
20
21
22
23
24
25
26
27
28
29
30
31
32
33
34
35
36
37
38
39
40
41
42
43
44
45
46
47
48
49
50
51
52
53
54
55
56
57
58
59
60
61
62
63
64
65
66
67
68
69
70
71
72
73
74
75
76

SECTION NUMBER	CHANNEL LENGTH	MIN EL OF ROADWAY	MAX EL OF LOW CHORD	IN EL GROUND	DISCHARGE (CFS)	CWSEL	TO	EG	TOPWID	STENCL	STENCR	VCH
4287.00	50.00	0.0	0.0	771.20	134.00	777.86	278.11	777.87	265.87	0.0	0.0	0.54
4287.00	50.00	0.0	0.0	771.20	278.00	778.31	365.08	778.31	285.88	0.0	0.0	0.90
4287.00	50.00	0.0	0.0	771.20	363.00	778.48	402.82	778.49	293.66	0.0	0.0	1.09
4287.00	50.00	0.0	0.0	771.20	584.00	778.83	484.25	778.84	309.11	0.0	0.0	1.51
4337.00	50.00	0.0	0.0	771.20	134.00	777.86	278.25	777.87	265.90	0.0	0.0	0.54
4337.00	50.00	0.0	0.0	771.20	278.00	778.31	365.49	778.32	285.97	0.0	0.0	0.90
4337.00	50.00	0.0	0.0	771.20	363.00	778.49	403.42	778.49	293.78	0.0	0.0	1.08
4337.00	50.00	0.0	0.0	771.20	584.00	778.83	485.43	778.84	309.32	0.0	0.0	1.51
5775.00	1438.00	0.0	0.0	796.60	94.00	797.75	7.39	797.95	68.34	0.0	0.0	5.10
5775.00	1438.00	0.0	0.0	796.60	201.00	798.02	14.23	798.35	73.50	0.0	0.0	6.74
5775.00	1438.00	0.0	0.0	796.60	265.00	798.15	18.08	798.54	75.89	0.0	0.0	7.48
5775.00	1438.00	0.0	0.0	796.60	437.00	798.47	29.75	798.99	81.95	0.0	0.0	8.67
5850.00	75.00	0.0	0.0	797.30	94.00	798.62	11.32	798.72	71.49	0.0	0.0	3.72
5850.00	75.00	0.0	0.0	797.30	201.00	799.03	24.39	799.18	79.33	0.0	0.0	4.59
5850.00	75.00	0.0	0.0	797.30	265.00	799.23	32.18	799.40	83.06	0.0	0.0	4.98
5850.00	75.00	0.0	0.0	797.30	437.00	799.65	51.71	799.88	90.82	0.0	0.0	5.90
5900.00	50.00	0.0	0.0	798.20	94.00	799.32	8.91	799.52	67.77	0.0	0.0	4.63
5900.00	50.00	0.0	0.0	798.20	201.00	799.58	20.42	799.89	72.74	0.0	0.0	5.08
5900.00	50.00	0.0	0.0	798.20	265.00	799.70	26.88	800.07	74.97	0.0	0.0	5.40
5900.00	50.00	0.0	0.0	798.20	437.00	800.00	46.58	800.49	80.55	0.0	0.0	5.87
5920.00	20.00	801.90	799.20	798.20	94.00	802.89	500.29	802.89	134.79	0.0	0.0	0.23
5920.00	20.00	801.90	799.20	798.20	201.00	803.31	608.79	803.32	142.68	0.0	0.0	0.43
5920.00	20.00	801.90	799.20	798.20	265.00	803.51	664.35	803.52	146.43	0.0	0.0	0.53
5920.00	20.00	801.90	799.20	798.20	437.00	803.93	788.58	803.94	154.22	0.0	0.0	0.78
5970.00	50.00	0.0	0.0	798.60	94.00	802.89	204.69	802.89	127.26	0.0	0.0	0.47
5970.00	50.00	0.0	0.0	798.60	201.00	803.31	251.71	803.32	135.13	0.0	0.0	0.92
5970.00	50.00	0.0	0.0	798.60	265.00	803.51	275.66	803.52	138.83	0.0	0.0	1.14
5970.00	50.00	0.0	0.0	798.60	437.00	803.93	329.88	803.94	146.61	0.0	0.0	1.66
6045.00	75.00	0.0	0.0	799.30	94.00	802.89	137.71	802.90	114.16	0.0	0.0	0.65
6045.00	75.00	0.0	0.0	799.30	201.00	803.32	176.44	803.32	122.06	0.0	0.0	1.17
6045.00	75.00	0.0	0.0	799.30	265.00	803.52	196.45	803.53	125.79	0.0	0.0	1.43
6045.00	75.00	0.0	0.0	799.30	437.00	803.94	242.41	803.96	133.64	0.0	0.0	2.05

SECTION NUMBER	DISCHARGE CFS	CWSEL	CWSEL DIFF EACH 0	CWSEL DIFF EACH SECTION	CWSEL-WSELK	TOPWID	T.W. DIFF	LENGTH
1300.000	495.000	743.997	0.0	0.0	0.0	237.591	0.0	1300.000
1300.000	894.000	749.309	0.312	0.0	0.0	273.882	-36.291	1300.000
1300.000	1093.000	749.471	0.163	0.0	0.0	292.746	-55.155	1300.000
1300.000	1571.000	749.791	0.320	0.0	0.0	301.158	-63.567	1300.000
1350.000	495.000	749.444	0.0	0.447	0.0	278.002	0.0	50.000
1350.000	894.000	749.870	0.426	0.561	0.0	300.788	-22.786	50.000
1350.000	1093.000	750.023	0.153	0.552	0.0	303.480	-25.478	50.000
1350.000	1571.000	750.339	0.316	0.548	0.0	309.022	-31.020	50.000
1400.000	495.000	749.563	0.0	0.119	0.0	268.512	0.0	50.000
1400.000	894.000	750.009	0.446	0.139	0.0	299.705	-31.193	50.000
1400.000	1093.000	750.176	0.168	0.153	0.0	302.636	-34.124	50.000
1400.000	1571.000	750.522	0.346	0.183	0.0	308.690	-40.176	50.000
1440.000	495.000	751.570	0.0	2.008	0.0	327.069	0.0	40.000

	1440.000	894.000	752.176	0.606	2.168	0.0	343.860	-16.792	40.000	
	1440.000	1093.000	752.409	0.233	2.233	0.0	355.791	-28.722	40.000	
	1440.000	1571.000	752.855	0.446	2.333	0.0	378.484	-51.415	40.000	
	1490.000	495.000	751.567	0.0	-0.003	0.0	325.379	0.0	50.000	
	1490.000	894.000	752.172	0.605	-0.004	0.0	336.509	-11.130	50.000	
1	1490.000	1093.000	752.404	0.231	-0.005	0.0	342.161	-16.761	50.000	1
2	1490.000	1571.000	752.849	0.445	-0.006	0.0	352.966	-27.587	50.000	2
3										3
4	1540.000	495.000	751.573	0.0	0.006	0.0	323.683	0.0	50.000	4
5	1540.000	894.000	752.182	0.609	0.009	0.0	334.317	-10.634	50.000	5
6	1540.000	1093.000	752.415	0.233	0.011	0.0	339.890	-16.207	50.000	6
7	1540.000	1571.000	752.864	0.449	0.015	0.0	350.756	-27.073	50.000	7
8										8
9	4100.000	134.000	774.187	0.0	22.614	0.0	9.976	0.0	2560.000	9
10	4100.000	278.000	775.317	1.130	23.135	0.0	104.486	-94.490	2560.000	10
11	4100.000	363.000	775.507	0.191	23.093	0.0	116.679	-106.743	2560.000	11
12	4100.000	584.000	775.929	0.422	23.066	0.0	143.788	-133.853	2560.000	12
13										13
14	4150.000	134.000	775.332	0.0	1.145	0.0	99.033	0.0	50.000	14
15	4150.000	278.000	775.392	0.560	0.575	0.0	135.424	-36.391	50.000	15
16	4150.000	363.000	776.114	0.222	0.606	0.0	149.037	-50.004	50.000	16
17	4150.000	584.000	776.527	0.414	0.598	0.0	165.166	-66.133	50.000	17
18										18
19	4200.000	134.000	775.426	0.0	0.094	0.0	92.427	0.0	50.000	19
20	4200.000	278.000	776.031	0.605	0.139	0.0	131.182	-38.755	50.000	20
21	4200.000	363.000	776.267	0.232	0.149	0.0	146.031	-53.604	50.000	21
22	4200.000	584.000	776.693	0.430	0.166	0.0	163.674	-71.247	50.000	22
23										23
24	4237.000	134.000	777.864	0.0	2.438	0.0	250.479	0.0	37.000	24
25	4237.000	278.000	778.307	0.444	2.276	0.0	277.010	-26.531	37.000	25
26	4237.000	363.000	778.480	0.173	2.218	0.0	284.859	-34.379	37.000	26
27	4237.000	584.000	778.823	0.343	2.130	0.0	300.249	-49.770	37.000	27
28										28
29	4287.000	134.000	777.864	0.0	0.0	0.0	265.868	0.0	50.000	29
30	4287.000	278.000	778.309	0.445	0.001	0.0	285.879	-20.011	50.000	30
31	4287.000	363.000	778.482	0.173	0.001	0.0	293.661	-27.793	50.000	31
32	4287.000	584.000	778.825	0.344	0.003	0.0	309.105	-43.237	50.000	32
33										33
34	4337.000	134.000	777.864	0.0	0.001	0.0	265.903	0.0	50.000	34
35	4337.000	278.000	778.312	0.448	0.003	0.0	285.965	-20.062	50.000	35
36	4337.000	363.000	778.486	0.174	0.004	0.0	293.781	-27.870	50.000	36
37	4337.000	584.000	778.832	0.346	0.007	0.0	309.318	-43.415	50.000	37
38										38
39	5775.000	94.000	797.749	0.0	19.884	0.0	68.344	0.0	1438.000	39
40	5775.000	201.000	798.024	0.275	19.712	0.0	73.504	-5.160	1438.000	40
41	5775.000	265.000	798.151	0.128	19.665	0.0	75.887	-7.543	1438.000	41
42	5775.000	437.000	798.474	0.325	19.642	0.0	81.938	-13.604	1438.000	42
43										43
44	5850.000	94.000	798.616	0.0	0.868	0.0	71.488	0.0	75.000	44
45	5850.000	201.000	799.034	0.418	1.011	0.0	79.335	-7.847	75.000	45
46	5850.000	265.000	799.232	0.198	1.081	0.0	83.058	-11.570	75.000	46
47	5850.000	437.000	799.647	0.415	1.173	0.0	90.821	-19.333	75.000	47
48										48
49	5900.000	94.000	799.317	0.0	0.701	0.0	67.770	0.0	50.000	49
50	5900.000	201.000	799.583	0.266	0.549	0.0	72.743	-4.973	50.000	50
51	5900.000	265.000	799.702	0.119	0.469	0.0	74.966	-7.196	50.000	51
52	5900.000	437.000	800.000	0.298	0.353	0.0	80.547	-12.777	50.000	52
53										53
54	5920.000	94.000	802.894	0.0	3.576	0.0	134.787	0.0	20.000	54
55	5920.000	201.000	803.313	0.419	3.729	0.0	142.683	-7.896	20.000	55
56	5920.000	265.000	803.510	0.198	3.809	0.0	146.429	-11.642	20.000	56
57	5920.000	437.000	803.927	0.416	3.927	0.0	154.224	-19.437	20.000	57
	5970.000	94.000	802.894	0.0	0.0	0.0	127.262	0.0	50.000	
	5970.000	201.000	803.313	0.419	0.0	0.0	135.126	-7.861	50.000	

5970.000	265.000	803.510	0.198	0.0	0.0	138.827	-11.564	50.000
5970.000	437.000	803.926	0.415	-0.001	0.0	146.608	-19.345	50.000
6045.000	94.000	802.895	0.0	0.001	0.0	114.165	0.0	75.000
6045.000	201.000	803.317	0.422	0.004	0.0	122.064	-7.899	75.000
6045.000	265.000	803.516	0.199	0.006	0.0	125.788	-11.623	75.000
6045.000	437.000	803.937	0.421	0.011	0.0	133.638	-19.473	75.000

DATA FOR LAST CROSS SECTION

PROFILE	TYPE ENC	TARGET	TOP WIDTH AREA-ACRES	TOP WIDTH AREA-DIFF	
1	0.0	0.0	16.475	0.0	1
2	0.0	0.0	22.336	3.861	2
3	0.0	0.0	23.146	4.671	3
4	0.0	0.0	24.017	6.342	4
					5
					6
					7
					8
					9
					10
					11
					12
					13
					14
					15
					16
					17
					18
					19
					20
					21
					22
					23
					24
					25
					26
					27
					28
					29
					30
					31
					32
					33
					34
					35
					36
					37
					38
					39
					40
					41
					42
					43
					44
					45
					46
					47
					48
					49
					50
					51
					52
					53
					54
					55
					56
					57
					58
					59
					60
					61
					62
					63
					64
					65
					66
					67
					68
					69
					70
					71
					72
					73
					74
					75
					76