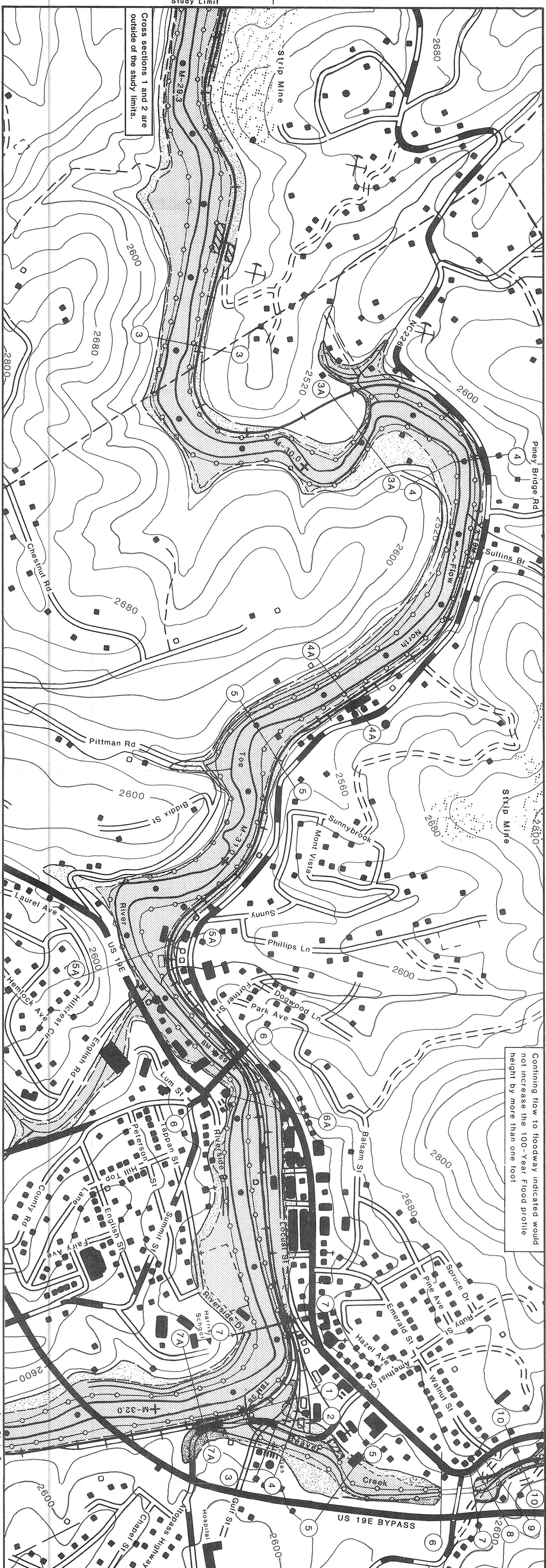


Confining flow to floodway indicated would not increase the 100-Year Flood profile height by more than one foot



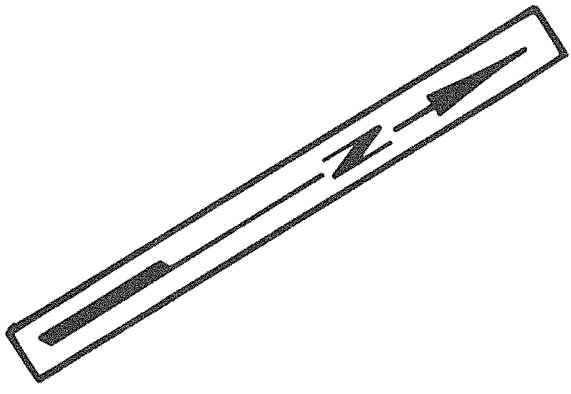
LEGEND:

- OVERFLOW LIMITS:
 - 100 YEAR FLOOD
 - 500 YEAR FLOOD
- + M-31.0 1/2 MILE MARK
- 5 CROSS SECTION
- FLOODWAY

The extent of flood overflow is based on data and measurements from aerial photography. Because of the methods used, the flooded areas as shown may not represent exact conditions on the ground.

Base map is a portion of USGS-TVA Topographic Quadrangle map 209 NE dated 1978 with minor revisions.

Contour interval 40 feet



TENNESSEE VALLEY AUTHORITY
OFFICE OF NATURAL RESOURCES AND ECONOMIC DEVELOPMENT

FLOODED AREAS WITH PROPOSED FLOODWAY

North Toe River
Spruce Pine N.C.

Mile 29.22 To Mile 32.20

SCALE 0 400 800 FEET

September 1985

Cross sections 1 and 2 are outside of the study limits.

Study Limit

See Plate 3

See Plate 4