

Exhibit FCH2

Fuda Creek HEC-2 Output

Study Contractor : Hayes, Seay, Mattern & Mattern
Contract Number : EMW-90-C-3101
HSMM Number : 2373

Multiple Output

Fuda Creek HEC-2 Output Multiple

Study Contractor : Hayes, Seay, Mattern & Mattern
Contract Number : EMW-90-C-3101
HSMM Number : 2373

```
*****
* HEC-2 WATER SURFACE PROFILES *
* *
* Version 4.6.2: May 1991 *
* *
* RUN DATE 05OCT91 TIME 16:36:08 *
*****
```

```
*****
* U.S. ARMY CORPS OF ENGINEERS *
* HYDROLOGIC ENGINEERING CENTER *
* 609 SECOND STREET, SUITE D *
* DAVIS, CALIFORNIA 95616-4687 *
* (916) 756-1104 *
*****
```

```
X X XXXXXX XXXX XXXX
X X X X X X X
X X X X X
XXXXXXXX XXXX X XXXX XXXX
X X X X X
X X X X X
X X XXXXXX XXXX XXXXXX
```

HAYES, SEAY, MATTERN & MATTER, INC.

ROANOKE, VIRGINIA - GREENSBORO, NORTH CAROLINA

COMMISSION NUMBER: 2373
INPUT FILE NAME: FC_MULT.HEC
OUTPUT FILE NAME: FC_MULT.OUT

THIS RUN EXECUTED 050CT91 16:36:08

 HEC-2 WATER SURFACE PROFILES
 Version 4.6.2; May 1991

T1 Hayes, Seay, Mattern & Mattern Cabarrus County, NC FIS
 T2 Proj. No. EMW-90-C-3101 Eng:LJM/EKL ET:TFH Comm. No. 2373
 T3 Fuda Creek (FC.IN) Date: 10/05/91 10-Year Event

J1 ICHECK INQ NINV IDIR STRT METRIC HVINS Q WSEL FQ
 2.0 0.0043 560.0

J2 NPROF IPILOT PRFVS XSECV XSECH FN ALLOC IBW CHNIM ITRACE
 1. -1 0

J3 VARIABLE CODES FOR SUMMARY PRINTOUT

101. 150.

J5 LPRNT NUMSEC *****REQUESTED SECTION NUMBERS*****
 -10.

WC	0.18	0.18	0.05	0.1	0.3						
NH	7.	1.	4904.	0.21	4945.	0.15	4989.	0.056	5021.5	0.14	
NH	5070.	0.21	5129.	1.	6301.	0.	0.	0.	0.	0.	
QT	8.	2448.	3649.	4134.	5523.	4134.	1217.	1909.	3162.		
ET	0.00	0.00	0.00	0.00	0.00	10.41	0.00	0.00	0.00	0.00	

 ***** HEC-2 Input file created with CodeH2 *****
 ***** Version: 3.79 *****
 ***** CodeH2 Copyrighted 1986 - 1991 *****
 ***** Run Date: Saturday October 5, 1991 *****
 ***** Run Time: 16:35:53 *****

 The Following Options Have Been Activated :
 1. MULTIPLE Option.
 2. HEC1 Option.
 3. SUMMARY_150 Option.

Cross Section A (HSMH Draft)

X1	198.	20.	4989.	5021.5	198.	198.	198.	4552.	555.76	4904.
GR	575.	4101.	570.	4173.	565.	4231.	560.	4997.	547.6	4999.9
GR	555.27	4945.	555.	4967.	555.51	4989.	548.25	5031.5	556.23	5070.
GR	547.61	5000.	548.23	5006.	555.08	5021.5	555.22	6007.	575.	6301.
GR	557.77	5129.	560.	5214.	565.	5907.	570.	0.056	5011.5	0.12
NH	7.	1.	4236.	0.21	4929.	0.13	4985.	0.	0.	0.
NH	5117.	0.21	5185.	1.	5372.	0.	0.	0.00	0.00	0.00
ET	0.00	0.00	0.00	0.00	0.00	7.41	0.00	0.00	0.00	0.00

Cross Section B (HSMH Draft)

X1	1485.	19.	4985.	5011.5	1287.	1287.	1287.	4806.	0.	4925.
GR	575.	4403.	570.	4568.	565.	4772.	562.76	4999.9	561.91	5000.
GR	560.9	4980.5	560.6	4985.	553.85	4990.	552.86	5040.	552.87	5117.
GR	553.87	5009.5	557.94	5011.5	560.	5034.	560.	5372.	563.47	0.
GR	565.	5151.	566.98	5185.	570.	5237.	575.	0.	0.	0.
NH	7.	1.	4812.	0.2	4897.	0.11	4988.	0.056	5018.5	0.11
NH	5085.	0.21	5129.	1.	5538.	0.	0.	0.	0.	0.
ET	0.00	0.00	0.00	0.00	0.00	7.11	4900.00	5050.00	0.00	0.00
X1	2448.9	49.	4988.	5018.5	963.9	963.9	963.9	3944.	0.	3972.
GR	594.47	3466.	589.47	3708.	588.24	3766.	584.47	4526.	583.75	4665.
GR	579.47	4139.	577.17	4313.	574.47	4517.	574.17	4938.	569.47	4987.49
GR	567.78	4812.	566.81	4897.	566.34	4937.9	566.34	4987.91	582.05	4988.
GR	562.04	4987.6	561.96	4987.7	561.92	4987.81	561.86	5000.	557.14	5006.
GR	561.74	4988.1	559.44	4992.	557.04	4595.	557.04	5018.	564.3	5018.1
GR	359.44	5010.5	562.14	5013.	564.22	5017.91	564.22	5018.5	564.36	5018.6
GR	564.34	5018.2	564.35	5016.31	564.35	5018.42	564.36	5102.	570.94	5129.
GR	567.44	5067.9	567.45	5068.	568.46	5085.	569.47	5272.	583.82	5392.
GR	571.64	5142.	574.47	5194.	578.76	5261.	579.47	5538.	0.	0.
GR	584.47	5416.	589.47	5445.	590.92	5472.	594.47	0.	0.	0.

Cross Section C (HSMH Draft)

NH	7.	1.	4812.	0.3	0.5	0.11	4988.	0.056	5018.6	0.11
NH	5025.	0.21	5129.	1.	5538.	0.	0.	0.	0.	0.
ET	0.00	0.00	0.00	0.00	0.00	7.11	4900.00	5050.00	0.00	0.00
X1	2570.5	49.	4988.	5018.6	121.6	121.6	121.6	568.1	0.	3972.
X3	10.	3466.	590.	3738.	588.77	3766.	585.	3944.	584.28	4665.
GR	595.	4139.	577.7	4313.	575.	4517.	574.7	4526.	570.	4987.49
GR	568.31	4812.	567.34	4897.	566.87	4937.9	566.87	4938.	562.58	4988.
GR	562.57	4987.6	562.51	4987.7	562.45	4987.81	562.39	4967.91	562.33	4988.
GR	562.27	4988.1	559.97	4992.	557.57	4995.	557.57	5000.	557.67	5006.
GR	559.97	5010.5	562.67	5012.	564.75	5017.91	564.75	5018.	564.83	5018.1
GR	564.87	5018.2	564.68	5018.31	564.88	5018.42	564.89	5018.5	564.89	5018.6
GR	567.97	5067.9	567.99	5068.	568.99	5085.	570.	5102.	571.47	5129.
GR	572.17	5142.	575.	5194.	579.29	5261.	580.	5272.	584.35	5392.
GR	585.	5410.	590.	5445.	591.45	5472.	595.	5538.	0.	0.

SB 1.25 1.79 2.60 0.00 0.00 21.36 0.00 235.10 0.22 557.57 557.57
 NH 7. 4812. 4897. 0.2 4897. 0.11 4988. 4988. 0.056 5018.6 5018.6
 NH 5085. 0.21 5129. 1. 5129. 0. 0. 0. 0. 0. 0. 0.
 ET 0.00 0.00 0.00 0.00 0.00 0.00 7.11 4900.00 5050.00 0.00 0.00

Hickory Ridge Road (SR 1138)

X1 2592.5 49. 4988. 5018.6 5018.6 22. 22. 0.00 0.00 0.00 0.00
 X2 0.00 0.00 567.57 569.67 569.67 22. 22. 0.00 0.00 0.00 0.00
 X3 10. 3466. 595.02 3708. 3708. 590.97 590.97 590. 569.67 3766. 588.77
 BT -49. 3944. 585.66 3972. 3972. 585. 585. 584.28 3766. 590. 588.77
 BT 3466. 4313. 590. 4517. 4517. 575.21 575.21 575. 582.55 580. 580.
 BT 4665. 573.2 570. 4812. 4812. 571.3 571.3 568.31 4526. 574.7 574.7
 BT 4937.9 569.67 566.87 4938. 4938. 569.67 569.67 566.87 4897.49 567.34 567.34
 BT 4987.6 569.67 562.57 4987.7 4987.7 562.57 562.57 562.57 4987.81 562.58 562.58
 BT 4987.91 567.47 567.47 4988. 4988. 567.47 567.47 567.47 4988.1 567.47 567.47
 BT 4992. 572.68 567.48 4995. 4995. 572.68 572.68 572.68 4988.1 572.67 572.67
 BT 5006. 572.73 567.53 5010.5 5010.5 572.74 572.74 572.74 5003. 572.75 572.75
 BT 5017.91 572.77 567.57 5018.31 5018.31 572.77 572.77 567.57 5013. 572.77 572.77
 BT 5018.2 572.77 566.52 5018.31 5018.31 572.77 572.77 566.52 5018.1 572.77 572.77
 BT 5018.5 569.77 564.89 5018.6 5018.6 569.77 569.77 564.89 5018.42 569.77 569.77
 BT 5068. 570.27 567.98 5085. 5085. 570.21 570.21 567.98 5067.9 570.27 570.27
 BT 5129. 571.49 571.47 5085. 5085. 571.47 571.47 571.47 5102. 570.15 570.15
 BT 5261. 579.31 579.29 5142. 5142. 579.31 579.31 579.29 5194. 575.02 575.02
 BT 5410. 585.02 585. 5445. 5445. 580.02 580.02 580. 584.37 584.35 584.35
 BT 5538. 595.02 595. 5445. 5445. 590.02 590.02 590. 591.47 591.45 591.45
 BT 595. 3466. 3708. 588.77 588.77 3766. 3766. 585. 584.28 3972. 3972.
 GR 580. 4139. 577.7 4313. 4313. 4517. 4517. 574.7 574.7 4865. 4865.
 GR 568.31 4812. 567.34 4897. 4897. 566.87 566.87 566.87 4938. 4987.49 4987.49
 GR 562.57 4987.6 562.51 4987.7 4987.7 557.47 557.47 565.68 4987.91 564.06 564.06
 GR 562.27 4988.1 559.97 4992. 4992. 557.57 557.57 557.57 5000. 557.67 557.67
 GR 559.97 5010.5 562.67 5013. 5013. 564.75 564.75 564.75 5018.1 5006. 5006.
 GR 554.87 5018.2 564.88 5018.31 5018.31 564.88 564.88 564.88 5018.5 564.83 564.83
 GR 567.97 5067.9 567.98 5068. 5068. 568.99 568.99 568.99 5018.6 564.89 564.89
 GR 572.17 5142. 575. 5194. 5194. 579.29 579.29 570. 571.47 5129. 5129.
 GR 585. 590. 590. 5445. 5445. 590.02 590.02 590. 584.35 5392. 5392.
 GR 595. 3466. 3708. 588.77 588.77 3766. 3766. 585. 584.28 3972. 3972.
 GR 580. 4139. 577.7 4313. 4313. 4517. 4517. 574.7 574.7 4865. 4865.
 GR 568.31 4812. 567.34 4897. 4897. 566.87 566.87 566.87 4938. 4987.49 4987.49
 GR 562.57 4987.6 562.51 4987.7 4987.7 557.47 557.47 565.68 4987.91 564.06 564.06
 GR 562.27 4988.1 559.97 4992. 4992. 557.57 557.57 557.57 5000. 557.67 557.67
 GR 559.97 5010.5 562.67 5013. 5013. 564.75 564.75 564.75 5018.1 5006. 5006.
 GR 554.87 5018.2 564.88 5018.31 5018.31 564.88 564.88 564.88 5018.5 564.83 564.83
 GR 567.97 5067.9 567.98 5068. 5068. 568.99 568.99 568.99 5018.6 564.89 564.89
 GR 572.17 5142. 575. 5194. 5194. 579.29 579.29 570. 571.47 5129. 5129.
 GR 585. 590. 590. 5445. 5445. 590.02 590.02 590. 584.35 5392. 5392.
 GR 595. 3466. 3708. 588.77 588.77 3766. 3766. 585. 584.28 3972. 3972.

NH 7. 4812. 4897. 0.2 4897. 0.11 4988. 4988. 0.056 5018.5 5018.5
 NH 5085. 0.21 5129. 1. 5129. 0. 0. 0. 0. 0. 0. 0.
 ET 0.00 0.00 0.00 0.00 0.00 0.00 7.11 4900.00 5050.00 0.00 0.00
 X1 2623.9 49. 4988. 5018.5 5018.5 31.4 31.4 0. 0. 0. 0. 0.
 GR 595.08 3466. 590.08 3708. 3708. 588.85 588.85 585.08 3944. 584.36 584.36
 GR 580.08 4139. 577.78 4313. 4313. 575.08 575.08 4517. 4526. 570.08 4665. 4665.
 GR 568.39 4812. 567.42 4897. 4897. 566.95 566.95 566.95 4938. 562.66 562.66
 GR 562.55 4887.6 562.59 4987.7 4987.7 562.53 562.53 562.47 4987.91 562.41 4938. 4938.
 GR 562.35 4988.1 560.05 4992. 4992. 557.65 557.65 557.65 5000. 557.75 557.75
 GR 560.05 5010.5 562.75 5013. 5013. 564.83 564.83 564.83 5018.1 5018.1 5018.1
 GR 564.95 5018.2 564.96 5018.31 5018.31 564.96 564.96 564.96 5018.5 564.97 564.97
 GR 568.05 5067.9 568.06 5068. 5068. 569.07 569.07 570.08 571.55 571.55
 GR 572.25 5142. 575.08 5194. 5194. 579.37 579.37 580.08 584.43 584.43
 GR 585.08 5410. 590.08 5445. 5445. 591.53 591.53 595.08 5538. 5538.

NC	7.	1.	4762.	0.1	0.3	0.1	4984.5	0.056	5026.	0.12
NH	5094.	0.21	5130.	0.2	4899.	0.	0.	0.	0.	0.
NH	0.00	0.00	0.00	1.	5265.	7.41	0.00	0.00	0.00	0.00
ET	0.00	0.00	0.00	0.00	0.00					

Cross Section C (HSMH Draft)

X1	3417.	19.	4984.5	5026.	793.1	793.1	793.1	4601.	0.	4734.
GR	590.	3663.	585.	3993.	580.	4297.	575.	4984.5	570.	4994.
GR	569.25	4752.	567.43	4899.	566.26	4974.5	566.26	5036.	560.05	5084.
GR	559.63	5007.	560.01	5006.	565.87	5026.	567.11	5265.	575.	0.
GR	580.	5114.	581.7	5130.	585.	5161.	590.	0.	0.	0.
NH	7.	1.	4825.	0.21	4887.	0.12	4984.5	0.058	5026.	0.12
NH	5110.	0.21	5160.	1.	5472.	0.	0.	0.	0.	0.

Cross Section C-1
Cross Section D (HSMH Draft)

X1	4002.	23.	4984.5	5026.	585.	535.	585.	4753.	0.	4825.
GR	595.	4003.	590.	4107.	585.	4485.	580.	4994.5	576.	4994.
GR	575.	4843.	572.98	4887.	570.	4952.	568.88	5069.	562.67	5110.
GR	562.25	5000.	562.62	5006.	568.49	5026.	570.	5354.	571.15	5367.
GR	572.56	5160.	575.	5247.	580.	5300.	585.	0.	590.	0.
GR	595.	5407.	600.	5431.	605.	5472.	0.	0.	0.	0.
NH	7.	1.	4745.	0.21	4867.	0.13	4979.5	0.058	5009.	0.14
NH	5036.	0.21	5071.	1.	5101.	0.	0.	0.	0.	0.
ET	0.00	0.00	0.00	0.00	0.00	8.41	0.00	0.00	0.00	0.00

Cross Section D
Cross Section E (HSMH Draft)

X1	4463.	22.	4979.5	5009.	461.	461.	461.	4289.	0.	4420.
GR	600.	3900.	595.	4122.	590.	4223.	585.	4965.5	580.	4979.5
GR	575.	4586.	573.49	4745.	572.33	4867.	571.39	5008.	570.75	5009.
GR	566.8	4985.5	565.8	4994.5	564.31	5000.	565.77	5068.	571.12	5071.
GR	575.9	5019.	580.	5036.	585.	5048.	590.	0.	590.94	0.
GR	595.	5084.	600.	5101.	0.	0.	0.	0.	0.	0.
NH	7.	1.	4832.	0.21	4905.	0.13	4979.5	0.058	5009.	0.13
NH	5089.	0.21	5117.	1.	5240.	0.	0.	0.	0.	0.
ET	0.00	0.00	0.00	0.00	0.00	9.41	0.00	0.00	0.00	0.00

Cross Section D-1A
Cross Section F (HSMH Draft)

X1	5263.	24.	4979.5	5009.	800.	800.	800.	4700.	0.	4805.
GR	600.	4270.	595.	4570.	590.	4630.	585.	4965.5	580.	4979.5
GR	578.59	4832.	575.	4900.	575.06	4905.	575.84	5000.	575.2	5008.
GR	571.25	4985.5	570.25	4994.5	568.76	4999.9	568.78	5117.	570.22	5130.
GR	575.57	5009.	575.	5030.	577.9	5088.	579.35	0.	580.	0.

GR	585.	5160.	590.	5190.	595.	5225.	600.	5240.	0.	0.
NH	7.	4829.	0.23	4910.	4982.5	0.16	4982.5	0.057	5007.7	0.16
NH	5106.	5182.	1.	5387.	0.	0.	0.	0.	0.	0.00
ET	0.00	0.00	0.00	0.00	10.41	0.00	0.00	0.00	0.00	0.00
Cross Section D-2										
Cross Section G (HSMH Draft)										
X1	5983.	26.	4982.5	5007.7	720.	720.	720.	4713.	0.	4763.
GR	610.	4344.	605.	4453.	600.	4636.	595.	4962.5	590.	4982.58
GR	585.07	4829.	585.	4830.	581.96	4910.	579.21	5000.8	579.21	5007.65
GR	575.26	4987.68	574.26	4995.33	572.77	5000.	574.23	5182.	585.	5241.
GR	579.58	5007.7	580.	5015.	582.01	5106.	583.69	5361.	610.	5373.
GR	590.	5294.	595.	5313.	600.	5342.	605.	0.	0.	0.
GR	615.	5387.	0.	0.	0.	0.	0.	0.	0.	0.
NH	7.	4860.	0.25	4928.	4986.5	0.18	4986.5	0.057	5006.5	0.18
NH	5086.	0.25	5149.	5237.	0.	0.	0.	0.	0.	0.
ET	0.00	0.00	0.00	0.00	9.41	0.00	0.00	0.00	0.00	0.00
Cross Section D-3										
Cross Section H (HSMH Draft)										
X1	6638.	23.	4986.5	5006.5	655.	655.	655.	4768.	0.	4793.
GR	615.	4605.	610.	4690.	605.	4719.	600.	4928.	595.	4986.5
GR	590.	4824.	586.12	4860.	585.	4903.	523.75	5006.5	585.	5047.
GR	577.05	4996.5	576.42	5000.	577.02	5004.5	579.55	5149.	600.	5172.
GR	588.75	5086.	590.	5099.	595.	5130.	597.26	0.	0.	0.
GR	605.	5195.	610.	5208.	615.	5237.	0.	0.	0.	0.
NH	7.	4887.	0.25	4929.	4986.5	0.18	4986.5	0.057	5006.5	0.18
NH	5045.	0.25	5088.	5134.	0.	0.	0.	0.	0.	0.
ET	0.00	0.00	0.00	0.00	10.41	0.00	0.00	0.00	0.00	0.00
Cross Section E										
Cross Section I (HSMH Draft)										
X1	7104.	23.	4986.5	5006.5	466.	466.	466.	4757.	0.	4847.
GR	610.	4542.	605.	4633.	600.	4592.	595.	4965.	590.	4986.5
GR	588.21	4887.	586.34	4929.	585.	4959.	585.	5004.5	583.41	5006.5
GR	579.64	4996.5	579.01	4999.9	579.02	5000.	579.61	5088.	595.	5094.
GR	583.63	5016.	585.	5045.	590.	5070.	593.75	0.	0.	0.
GR	600.	5106.	605.	5115.	610.	5134.	0.	0.	0.	0.
NH	7.	4904.	0.26	4933.	4986.	0.19	4986.	0.057	5011.	0.19
NH	5106.	0.26	5158.	5241.	0.	0.	0.	0.	0.	0.
Cross Section F										

Cross Section J (HSMI Draft)

X1	9493.	33.	4986.	5011.	2389.	2389.	2389.	2389.	0.	4548.
GR	640.	4279.	635.	4356.	630.	4413.	625.	620.	620.	4904.
GR	615.	4588.	610.	4703.	605.	4736.	4817.	597.04	597.04	4990.5
GR	595.05	4933.	595.	4964.	595.	4967.	4986.	591.59	591.59	5021.5
GR	591.2	4999.9	591.2	5000.	591.57	5007.	5011.	596.09	596.09	5139.
GR	595.	5068.	600.	5095.	605.	5106.	5125.	615.	615.	5190.
GR	620.	5152.	620.	5158.	625.	5170.	5178.	635.	635.	0.
GR	640.	5208.	645.	5227.	650.	5241.	0.	0.	0.	0.
NH	7.	1.	4816.	0.23	4891.	0.14	4995.5	5013.6	5013.6	0.14
NH	5085.	0.23	5117.	1.	5672.	0.	0.	0.	0.	0.
QT	8.	1797.	2695.	3052.	4074.	3052.	891.	1408.	2378.	0.
ET	0.00	0.00	0.00	0.00	0.00	7.11	4875.00	5050.00	0.00	0.00
X1	10558.	51.	4996.5	5013.6	1065.5	1065.5	1065.5	4300.	618.36	4327.
GR	628.36	4082.	623.36	4163.	622.93	4177.	619.18	4594.	603.36	4759.
GR	613.63	4450.	613.36	4457.	608.36	4593.9	608.36	4933.5	598.68	4983.29
GR	602.41	4816.	601.15	4891.	600.44	4933.4	600.44	4984.41	598.64	4984.5
GR	598.07	4983.4	598.67	4983.51	598.64	4984.31	598.64	5000.5	594.74	5004.5
GR	598.64	4984.6	598.74	4996.5	597.24	4999.9	595.44	597.24	597.24	5013.6
GR	594.59	5007.	594.44	5009.5	595.34	5013.4	597.24	5014.51	597.26	5014.6
GR	597.24	5014.21	597.24	5014.3	597.24	5014.4	597.25	5073.4	602.64	5073.5
GR	597.32	5015.29	597.33	5015.4	597.34	5015.51	602.63	5160.	613.36	5224.
GR	603.4	5085.	605.52	5117.	608.1	5156.	608.36	5433.	627.02	5578.
GR	617.49	5281.	618.36	5293.	623.36	5321.	624.96	0.	0.	0.
GR	628.36	5672.	0.	0.	0.	0.	0.	0.	0.	0.
NC	7.	1.	4816.	0.3	0.5	0.14	4984.5	5014.6	5014.6	0.14
NH	5085.	0.23	5117.	1.	5672.	0.	0.	0.	0.	0.
ET	0.00	0.00	0.00	0.00	0.00	7.11	4875.00	5050.00	0.00	0.00
X1	11098.	51.	4984.5	5014.6	540.	540.	540.	605.7	605.7	4327.
X3	10.	10.	4984.5	5014.6	540.	540.	540.	4300.	620.	4759.
GR	630.	4082.	625.	4163.	624.57	4177.	620.82	4594.	605.	4983.29
GR	615.27	4450.	615.	4457.	610.	4593.9	610.	4933.5	600.32	4984.5
GR	634.05	4516.	602.79	4891.	602.08	4933.4	602.08	4984.41	600.28	5004.5
GR	600.31	4983.4	600.31	4983.51	600.20	4984.31	600.28	5000.5	596.38	5013.6
GR	600.28	4984.6	600.38	4996.5	598.88	4999.9	597.08	5013.51	598.88	5014.6
GR	596.23	5007.	596.08	5009.5	596.98	5013.4	598.88	5014.51	598.9	5073.5
GR	596.08	5014.21	598.88	5014.3	598.88	5014.4	598.89	5073.4	604.28	5224.
GR	598.96	5015.29	598.97	5015.4	598.98	5015.51	604.27	5160.	628.66	5578.
GR	605.04	5085.	607.16	5117.	609.74	5156.	610.	5433.	0.	0.
GR	619.13	5281.	620.	5293.	625.	5321.	626.6	0.	0.	0.
GR	630.	5672.	0.	0.	0.	0.	0.	0.	0.	0.
SB	1.25	2.02	2.60	0.00	21.01	0.00	205.06	0.09	596.08	596.08
NH	7.	1.	4816.	0.23	4891.	0.14	4984.5	0.057	5014.6	0.14
NH	5085.	0.23	5117.	1.	5672.	0.	0.	0.	0.	0.
ET	0.00	0.00	0.00	0.00	0.00	7.11	4875.00	5050.00	0.00	0.00

X1	13620.	22.	4989.	5020.	875.	875.	875.	0.	0.	4808.
GR	640.	4618.	635.	4679.	630.	4744.	4783.	620.	620.	4991.
GR	619.43	4822.	617.44	4871.	615.	4931.	4989.	609.34	609.34	5034.
GR	608.99	4999.9	608.99	5000.	609.33	5007.	5029.	615.	615.	5209.
GR	629.	5075.	625.	5098.	627.61	5122.	5144.	635.	635.	0.
GR	640.	5305.	645.	5427.	0.	0.	0.	0.	0.	0.
NH	7.	1.	4872.	0.27	4918.	0.19	0.055	5010.	5010.	0.19
NH	5088.	0.27	5128.	1.	5246.	0.	0.	0.	0.	0.
ET	0.00	0.00	0.00	0.00	0.00	7.41	0.00	0.00	0.00	0.00

Cross Section G1

Cross Section Q (HSMM Draft)

X1	14711.	21.	49366.	5010.	1091.	1091.	4872.	0.	0.	4918.
GR	635.	4710.	630.	4793.	625.	4852.	4988.	622.36	622.36	4993.5
GR	629.6	4962.	620.	4971.9	620.	4972.	5010.	615.69	615.69	5029.
GR	615.34	4999.9	615.33	5000.	615.66	5007.	5141.	618.32	618.32	5185.
GR	629.	5039.	622.4	5088.	624.36	5128.	0.	630.	630.	0.
GR	635.	5246.	0.	0.	0.	0.	0.	0.	0.	0.
NH	7.	1.	4831.	0.22	4902.	0.16	0.055	5014.	5014.	0.16
NH	5065.	0.23	5114.	1.	5276.	0.	0.	0.	0.	0.
ET	0.00	0.00	0.00	0.00	0.00	7.11	5025.00	0.00	0.00	0.00

Cross Section H

Cross Section P (HSMM Draft)

X1	15764.	24.	4984.	5014.	1053.	1053.	4570.	0.	0.	4673.
GR	650.	4319.	645.	4369.	640.	4485.	4944.	630.	630.	4964.
GR	627.29	4831.	626.07	4902.	625.5	4935.	5000.	625.19	625.19	5095.
GR	624.44	4984.	620.68	4990.	619.42	4999.9	5066.	620.	620.	5085.
GR	620.88	5010.	624.38	5014.	626.01	5024.	5276.	635.	635.	0.
GR	640.	5107.	640.56	5114.	645.	5170.	0.	0.	0.	0.
NH	7.	1.	4875.	0.2	4822.	0.13	0.055	5010.	5010.	0.13
NH	5074.	0.2	5112.	1.	5275.	0.	0.	0.	0.	0.
ET	0.00	0.00	0.00	0.00	0.00	7.41	0.00	0.00	0.00	0.00

Cross Section I

Cross Section Q (HSMM Draft)

X1	17373.	23.	4992.	5010.	1609.	1609.	4765.	0.	0.	4844.
GR	655.	4535.	650.	4676.	645.	4717.	4986.	635.	635.	4992.
GR	633.65	4875.	631.61	4922.	629.96	4960.	5005.	628.44	628.44	5010.
GR	625.77	4994.5	625.49	4999.9	625.49	5000.	5112.	629.55	629.55	5116.
GR	630.77	5025.	630.26	5035.	635.	5074.	0.	640.	640.	0.
GR	645.	5149.	650.	5206.	655.	5275.	0.	0.	0.	0.

BT	4999.8	642.09	5000.	647.	642.08	5000.29	647.	642.08
BT	5000.58	642.03	5000.87	647.02	641.96	5001.16	647.03	641.85
BT	5001.45	647.04	5001.74	647.05	641.51	5002.03	647.06	641.26
BT	5002.32	647.07	5002.61	647.07	640.45	5002.9	647.08	639.19
BT	5005.	647.15	5019.	647.56	644.94	5049.9	648.03	646.03
BT	5050.	648.56	5052.	650.	648.72	5059.	651.12	551.1
BT	5092.	654.29	5111.	656.12	656.1	5126.	661.12	561.1
BT	5135.	666.12	5146.	671.12	671.1	5155.	676.12	676.1
GR	4426.	667.74	663.77	4620.	661.1	4690.	658.34	4760.
GR	671.1	4817.	651.1	4689.	648.95	4900.	646.1	4933.
GR	645.49	4937.	643.53	4950.	642.02	4967.	639.44	4996.
GR	636.84	4997.	637.93	4997.39	637.45	4997.68	637.12	4997.97
GR	636.87	4998.26	636.53	4998.84	636.42	4999.13	36.35	4999.42
GR	636.3	4999.61	636.29	4999.8	636.3	5000.	636.3	5000.29
GR	636.35	5000.58	636.42	5001.16	636.68	5001.45	636.87	5001.74
GR	637.12	5002.63	637.45	5002.61	639.19	5002.9	637.84	5005.
GR	644.94	5019.	648.03	5050.	648.72	5052.	651.1	5059.
GR	654.27	5092.	651.1	5126.	666.1	5135.	671.1	5146.
GR	676.1	5155.	0.	0.	0.	0.	0.	0.
NH	7.	4859.	0.25	0.18	4996.	0.06	5019.	0.18
NH	5059.	5092.	1.	0.	0	0.	0.	0.
ET	0.00	0.00	0.00	7.11	4935.00	5023.00	0.00	0.00
XI	18704.	51.	5019.	61.	61.	0.	0.	0.
GR	671.14	4426.	667.78	4620.	661.14	4690.	658.38	4760.
GR	656.14	4817.	651.14	4689.	648.69	4900.	646.14	4933.
GR	645.52	4937.	643.57	4950.	642.06	4967.	639.48	4996.
GR	636.88	4997.	636.88	4997.39	636.88	4997.68	636.88	4997.97
GR	636.86	4996.26	636.88	4998.84	636.88	4999.13	636.88	4999.42
GR	635.89	4999.61	636.88	4999.8	636.88	5000.	636.94	5000.29
GR	637.05	5000.58	637.11	5001.16	637.17	5001.45	637.23	5001.74
GR	637.29	5002.63	637.34	5002.61	637.46	5002.9	637.88	5005.
GR	644.99	5019.	648.07	5050.	648.76	5052.	651.14	5059.
GR	654.31	5092.	651.14	5126.	666.14	5135.	671.14	5146.
GR	676.14	5155.	0.	0.	0.	0.	0.	0.
NC	7.	0.1	0.3	0.18	4973.	0.06	5018.	0.18
NH	5064.	4915.	4933.	0.	0.	0.	0.	0.
ET	0.00	5080.	5255.	0.	4973.00	5075.00	0.00	0.00
XI	19353.	48.	0.00	7.11	649.	0.	0.	0.
GR	686.81	4801.	681.31	649.	678.6	4860.	676.81	4665.
GR	671.81	4885.	666.84	4913.	666.86	4915.	666.96	4933.
GR	667.08	4954.9	665.28	4973.	651.35	4992.	647.68	4997.
GR	647.45	4997.3	647.02	4997.9	646.8	4998.2	646.58	4998.5
GR	646.36	4998.8	645.92	4999.4	645.7	4999.7	645.63	4999.8
GR	645.48	5000.	645.75	5000.6	645.89	5000.9	646.03	5001.2
GR	646.10	5001.5	646.3	5002.1	646.57	5002.4	646.71	5002.7
GR	646.25	5003.	652.44	5064.	655.39	5076.	656.49	5080.
GR	661.96	5099.9	666.81	5110.	671.5	5156.	671.81	5159.
GR	676.81	5184.	686.81	5255.	0.	0.	0.	0.

KC	7.	0.3	0.5	0.18	4937.	0.06	5003.	0.18
NH	5064.	1.	4933.	0.	0.	0.	0.	0.
ET	0.00	0.00	5255.	7.11	4990.00	5075.00	0.00	0.00
X1	19593.	48.	240.	240.	240.	0.	0.	0.
X3	10.	5003.	240.	240.	240.	0.	0.	0.
GR	689.99	4201.	689.99	4851.	661.78	661.	657.5	4865.
GR	574.99	4085.	689.99	4907.	670.04	4860.	679.99	4933.
GR	670.26	4954.9	670.26	4913.	654.53	4915.	670.14	4997.
GR	650.54	4997.3	650.42	4973.	649.98	4992.	650.86	4998.5
GR	649.14	4998.8	649.32	4997.9	648.88	4999.2	649.76	4999.8
GR	648.66	5009.	648.8	4999.4	649.07	4999.7	648.81	5001.2
GR	649.34	5001.5	649.48	5000.6	649.75	5000.4	649.89	5002.7
GR	650.03	5003.	656.86	5002.1	649.75	5002.4	649.89	5080.
GR	655.16	5099.9	665.21	5084.	659.57	5076.	659.67	5159.
GR	679.99	5184.	689.99	5110.	674.68	5156.	674.99	0.
GR		5223.	589.99	5255.	0.	0.	0.	0.
SC	1.033	0.80	6.00	0.00	85.0	2.3	648.67	648.67
NH	7.	1.	4915.	0.18	4937.	0.06	5003.	0.18
NH	5064.	0.26	5080.	0.	0.	0.	0.	0.
ET	0.00	0.00	0.00	7.11	4925.00	5098.00	0.00	0.00

Picadilly Lane

X1	19679.	48.	4937.	86.	86.	0.00	0.00	0.00
X2	0.00	0.00	2.00	0.00	0.00	0.00	0.00	0.00
X3	10.	5003.	654.67	670.11	670.11	674.77	670.11	685.
BT	-48.	690.	4829.	690.02	690.	4851.	685.76	675.
BT	4801.	4860.	681.75	684.53	680.	4885.	682.64	670.05
BT	4907.	4907.	680.57	680.	670.03	4915.	679.9	651.67
BT	4933.	4933.	678.95	677.81	670.27	4955.	677.8	653.81
BT	4973.	4973.	676.44	675.	654.54	4997.	674.77	654.42
BT	4997.3	4997.3	674.76	674.74	653.47	4997.9	674.73	654.65
BT	4998.2	4998.2	674.72	674.7	654.27	4998.8	674.69	654.42
BT	4999.1	4999.1	674.67	674.66	654.61	4998.7	674.65	654.65
BT	4999.8	4999.8	674.64	674.63	654.54	5000.3	674.62	653.81
BT	5000.6	5000.6	674.61	674.59	654.53	5001.2	674.58	651.67
BT	5001.5	5001.5	674.56	674.55	654.07	5002.1	674.54	658.58
BT	5002.4	5002.4	674.52	674.51	652.90	5003.	674.5	665.22
BT	5016.	5016.	673.81	671.7	655.27	5076.	671.15	675.
BT	5080.	5080.	670.98	670.11	665.17	5100.	670.11	690.
BT	5110.	5110.	670.98	675.	674.69	5159.	675.02	4865.
BT	5184.	5184.	680.62	685.02	685.	690.02	690.02	4933.
GR	690.	4801.	690.	4851.	681.79	4860.	680.	4997.
GR	675.	4885.	670.	4913.	670.05	4915.	670.15	4998.5
GR	670.27	4954.9	670.27	4973.	668.47	4992.	651.67	4999.8
GR	650.36	4997.3	649.87	4997.9	649.27	4998.2	649.07	5001.2
GR	648.92	4998.8	648.81	4999.4	648.69	4999.7	648.67	5002.7
GR	648.66	5000.	648.69	5000.6	648.81	5000.9	648.92	5080.
GR	649.07	5001.5	649.27	5001.3	649.87	5002.4	650.36	5159.
GR	651.67	5003.	656.87	5018.	658.58	5076.	659.68	0.
GR	655.17	5099.9	665.22	5100.	674.59	5156.	675.	0.
GR	5184.	5184.	685.	5255.	0.	0.	0.	0.

MH	7.	4915.	0.25	4933.	0.18	4973.	0.06	5018.	0.18
NH	5064.	5080.	1.	5255.	0.	0.	0.	0.	0.
ET	0.00	0.00	0.00	0.00	7.11	4925.00	5098.00	0.00	0.00
X1	12740.	4973.	5018.	61.	61.	61.	0.	0.	0.
GR	691.53	4801.	4829.	685.53	4851.	682.32	4860.	680.53	4865.
GR	675.53	4885.	4907.	670.56	4913.	670.58	4915.	670.68	4933.
GR	670.8	4854.9	4855.	669.	4973.	655.07	4992.	651.4	4997.
GR	651.18	4997.3	4997.6	650.74	4997.9	650.52	4998.2	650.3	4998.5
GR	650.08	4998.8	4999.1	649.64	4999.4	649.42	4999.7	649.35	4999.8
GR	649.2	5000.	5000.3	649.47	5000.6	649.61	5000.9	649.75	5001.2
GR	649.80	5001.5	5001.8	650.16	5002.1	650.29	5002.4	650.43	5002.7
GR	650.57	5003.	5018.	655.8	5064.	659.11	5076.	650.21	5080.
GR	665.7	5099.9	5100.	670.53	5110.	675.22	5156.	660.21	5159.
GR	680.53	5184.	5223.	690.53	5255.	0.	0.	575.53	0.

NC			0.1	0.3					
MH	7.	4901.	0.26	4930.	0.16	4995.5	0.06	5005.5	0.16
NH	5036.	5081.	1.	5224.	0.	0.	0.	0.	0.
ET	0.00	0.00	0.00	0.00	7.41	0.00	0.00	0.00	0.00

Cross Section I-1
Cross Section R (HSMM Draft)

X1	20145.	24.	4995.5	5005.5	404.5	404.5		0.	4881.
GR	690.	4579.	685.	4716.	880.	675.	4842.	670.	4995.5
GR	667.87	4901.	665.	4928.	660.	660.	4950.	656.31	5005.5
GR	655.88	4996.5	552.77	4999.9	5000.	652.82	5004.5	656.08	5104.
GR	658.36	5036.	660.	5058.	5077.	665.74	5081.	670.	0.
GR	675.	5142.	680.	5164.	690.	690.	5224.	0.	0.
MH	7.	1.	4879.	0.26	4925.	4995.5	0.06	5005.5	0.16
NH	5070.	0.26	5101.	1.	5150.	0.	0.	0.	0.

Cross Section I-2 (@ County Line)
Cross Section S (HSMM Draft)

X1	20757.	19.	4995.5	5005.5	612.	612.		0.	4800.
GR	685.	4530.	680.	4625.	675.	670.	4730.	665.	4999.9
GR	663.62	4879.	662.81	4925.	661.58	661.15	4996.5	658.04	5070.
GR	657.95	5000.	658.09	5004.5	661.35	665.	5045.	670.	0.
GR	675.	5090.	676.83	5101.	680.	685.	5150.	0.	0.
MH	7.	1.	4879.	0.26	4925.	4995.5	0.06	5005.5	0.15
NH	5075.	0.26	5101.	1.	5252.	0.	0.	0.	0.
QT	6.	731.	1102.	1250.	1675.	358.	571.	977.	0.

Cross Section J
Cross Section T (HSMM Draft)

X1	21207.	23.	4995.5	450.	450.	4747.	0.	1787.
GR	390.	4508.	685.	680.	675.	4995.5	670.	4996.5
GR	665.	4857.	665.07	665.23	665.46	5005.5	665.03	5050.5
GR	661.92	4999.9	661.83	661.97	665.23	5110.	680.	5132.
GR	669.43	5075.	670.	672.5	675.	0.	0.	0.
GR	685.	5153.	690.	695.	0.			
			5005.5	5101.				
			4622.	5252.				
			4879.					
			5000.					
			5092.					
			5218.					

05OCT91

16:36:08

PAGE 15

T1	Hayes, Seay, Mattern & Mattern	Cabarrus County, NC FIS
T2	Proj. No. EMW-90-C-3101 Eng:LJM/EKL ET:TFH	Comm. No. 2373
T3	Fuda Creek (FC.IN) Date: 10/05/91	50-Year Event

J1	ICHECK	IKQ	KIRV	IDIR	STRT	METRIC	HVINS	Q	WSEL	FQ
	3.0			0.0043					560.0	
J2	NPROF	IPLOT	PRFVS	XSECV	XSECH	FN	ALLDC	IBW	CHNIM	ITRACE
2.		-1.0								

05OCT91

16:36:08

PAGE 16

T1 Hayes, Seay, Mattern & Mattern Cabarrus County, NC FIS
T2 Proj. No. EMM-90-C-3101 Eng:LJM/EKL ET:TFH Comm. No. 2373
T3 Fuda Creek (FC.IN) Date: 10/05/91 100-Year Event

J1	ICHECK	INQ	N1HV	IDIR	STRT	METRIC	HVINS	Q	WSEL	FQ
	4.0			0.0043					560.0	
J2	NPROF	IPLDT	PRFVS	XSECV	XSECH	FN	ALLOC	IBW	CHNIM	TRACE
3.		-1.0								

05OCT91 15:36:08

PAGE 17

T1 Hayes, Seay, Mattern & Mattern Cabarrus County, NC FIS
 T2 Proj. No. EM-30-C-3101 Eng: LJM/EKL ET:TFH Comm. No. 2373
 T3 Fuja Creek (FC.1H) Date: 10/05/91 500-Year Event

J1 ICHECK INQ MINV IDIR STRI METRIC HVINS Q WSEL FQ
 5.0 0.0043 560.0
 J2 NPROF IPLOT PRFVS XSECV XSECH FN ALLDC IBW CHNIM ITRACE
 15. -1.0

THIS RUN EXECUTED 05OCT91 16:36:25

 HEC-2 WATER SURFACE PROFILES
 Version 4.6.2; May 1991

NOTE- ASTERISK (*) AT LEFT OF CROSS-SECTION NUMBER INDICATES MESSAGE IN SUMMARY OF ERRORS LIST

Fuda Creek (FC.IN)

SUMMARY PRINTOUT TABLE 101

SECNO	EGOC	ELLC	EGIC	ELTRD	QCULV	QWEIR	CLASS	H4	DEPTH	CWSEL	VCH	EG
* 18643.000	917.52	640.99	955.58	646.69	332.75	1464.46	16.00	4.11	13.60	649.89	5.94	650.06
18643.000	1259.51	640.99	1350.77	646.69	344.93	2362.73	16.00	3.22	14.29	650.58	7.95	650.87
18643.000	1433.20	640.99	1551.78	646.69	348.85	2704.65	16.00	2.91	14.50	650.79	8.70	651.13
18643.000	2049.07	640.99	2265.27	646.69	358.61	3679.74	16.00	2.15	15.02	651.31	10.73	651.81
* 19679.000	871.42	654.67	875.29	670.11	566.36	1248.26	16.00	12.52	25.39	674.06	2.82	674.10
* 19679.000	1137.39	654.67	1154.32	670.11	577.97	2099.83	16.00	12.03	26.31	674.98	3.28	675.02
* 19679.000	1272.33	654.67	1296.24	670.11	581.83	2462.00	16.00	11.73	26.61	675.28	3.64	675.33
* 19679.000	1750.76	654.67	1800.02	670.11	591.03	3449.39	16.00	10.93	27.33	676.00	4.61	676.07

Fuda Creek (FC. IN)

SUMMARY PRINTOUT TABLE 150

SECDNO	XLCH	ELTRD	ELLC	ELMTH	Q	CWSEL	CRISVS	EG	10*KS	VCH	AREA	.0IK
198.000	.00	.00	.00	547.60	2448.00	558.81	.00	559.26	42.81	6.46	1227.25	374.15
198.000	.00	.00	.00	547.60	3649.00	560.16	.00	560.66	43.54	7.22	2037.95	553.00
198.000	.00	.00	.00	547.60	4134.00	560.65	.00	561.16	43.13	7.43	2403.68	629.51
199.000	.00	.00	.00	547.60	5523.00	561.84	.00	562.38	43.37	8.03	3492.50	838.70
1465.000	1287.00	.00	.00	552.86	2448.00	563.99	.00	564.45	37.99	6.50	830.83	397.18
1485.000	1287.00	.00	.00	552.86	3649.00	565.42	.00	565.89	38.01	7.12	1337.58	591.91
1485.000	1287.00	.00	.00	552.86	4134.00	565.90	.00	566.38	38.18	7.34	1537.33	669.04
1485.000	1287.00	.00	.00	552.86	5523.00	567.13	.00	567.62	38.30	7.86	2110.44	892.43
2448.900	963.90	.00	.00	557.04	2448.00	567.89	.00	568.46	45.04	6.95	553.24	384.76
2448.900	963.90	.00	.00	557.04	3649.00	569.26	.00	569.83	43.45	7.53	1126.55	553.60
2448.900	963.90	.00	.00	557.04	4134.00	569.73	.00	570.30	42.88	7.71	1331.27	631.28
2448.900	963.90	.00	.00	557.04	5523.00	570.92	.00	571.49	41.57	8.16	1899.29	856.62
2570.500	121.60	.00	.00	557.57	2448.00	568.45	.00	569.01	44.16	6.89	661.88	368.40
2570.500	121.60	.00	.00	557.57	3649.00	569.79	.00	570.36	43.47	7.52	1126.00	553.45
2570.500	121.60	.00	.00	557.57	4134.00	570.25	.00	570.82	43.06	7.72	1327.61	629.97
2570.500	121.60	.00	.00	557.57	5523.00	571.43	.00	572.00	42.25	8.20	1881.83	849.70
2592.500	22.00	569.67	567.57	557.57	2448.00	570.55	.00	570.70	14.87	4.08	1463.58	634.89
2592.500	22.00	569.67	567.57	557.57	3649.00	571.71	.00	571.89	18.25	4.84	2030.60	854.10
2592.500	22.00	569.67	567.57	557.57	4134.00	572.02	.00	572.23	20.21	5.18	2194.57	919.67
2592.500	22.00	569.67	567.57	557.57	5523.00	572.73	.00	573.01	26.17	6.12	2587.95	1079.68
2623.900	31.40	.00	.00	557.65	2448.00	570.58	.00	570.76	13.19	4.34	1441.74	674.00
2623.900	31.40	.00	.00	557.65	3649.00	571.74	.00	571.97	16.39	5.18	2008.48	901.43
2623.900	31.40	.00	.00	557.65	4134.00	572.06	.00	572.31	18.17	5.55	2171.63	969.88
2623.900	31.40	.00	.00	557.65	5523.00	572.78	.00	573.11	23.58	6.58	2571.14	1137.34
3417.000	793.10	.00	.00	555.63	2448.00	571.59	.00	571.74	11.55	3.88	1425.99	720.39
3417.000	793.10	.00	.00	559.63	3649.00	572.95	.00	573.14	13.35	4.56	1962.17	998.80
3417.000	793.10	.00	.00	559.63	4134.00	573.38	.00	573.58	14.25	4.83	2142.11	1095.19
3417.000	793.10	.00	.00	559.63	5523.00	574.42	.00	574.63	16.71	5.55	2610.24	1351.24
4002.000	585.00	.00	.00	562.25	2448.00	572.51	.00	572.93	36.66	5.85	745.33	404.29
4002.000	585.00	.00	.00	562.25	3649.00	573.97	.00	574.39	34.05	6.32	1186.36	625.34
4002.000	585.00	.00	.00	562.25	4134.00	574.44	.00	574.88	33.78	6.51	1357.21	711.30
4002.000	585.00	.00	.00	562.25	5523.00	575.63	.00	576.09	33.56	7.00	1832.55	953.32
4463.000	461.00	.00	.00	564.31	2448.00	574.53	.00	575.10	59.85	7.14	822.24	316.44
4463.000	461.00	.00	.00	564.31	3649.00	575.87	.00	576.42	56.43	7.66	1399.07	485.77
4463.000	461.00	.00	.00	564.31	4134.00	576.33	.00	576.88	55.37	7.84	1619.79	555.54
4463.000	461.00	.00	.00	564.31	5523.00	577.50	.00	578.05	54.20	8.34	2203.81	750.17

*

*

*

*

*

*

SECH0	XLCH	ELTPD	ELLC	ELMIN	Q	CWSEL	CRINS	EG	10*KS	VCH	AREA	.01K
5263.000	800.00	.00	.00	568.76	2448.00	578.92	.00	579.30	46.08	6.24	895.51	360.61
5263.000	800.00	.00	.00	568.76	3649.00	580.15	.00	580.57	47.46	6.95	1271.35	529.66
5263.000	800.00	.00	.00	568.76	4134.00	580.58	.00	581.01	48.02	7.20	1414.01	586.55
5263.000	900.00	.00	.00	568.76	5523.00	581.71	.00	582.17	48.65	7.79	1814.38	791.81
5983.000	720.00	.00	.00	572.77	2448.00	583.08	.00	583.96	89.99	8.72	644.42	258.06
5983.000	720.00	.00	.00	572.77	3649.00	584.35	.00	585.22	86.84	9.42	1049.83	391.58
5983.000	720.00	.00	.00	572.77	4134.00	584.79	.00	585.65	85.34	9.62	1217.80	447.51
5983.000	720.00	.00	.00	572.77	5523.00	585.90	.00	586.74	81.53	10.09	1684.30	611.66
6238.000	655.00	.00	.00	576.42	2448.00	587.58	.00	588.11	46.25	7.51	876.77	359.97
6238.000	655.00	.00	.00	576.42	3649.00	588.97	.00	589.63	53.32	8.82	1186.75	499.72
6238.000	655.00	.00	.00	576.42	4134.00	589.43	.00	590.14	55.96	9.29	1299.64	552.61
6238.000	655.00	.00	.00	576.42	5523.00	590.57	.00	591.42	62.97	10.50	1599.28	696.01
7104.000	466.00	.00	.00	579.01	2448.00	589.83	.00	590.38	50.97	7.69	878.29	342.89
7104.000	466.00	.00	.00	579.01	3649.00	591.47	.00	592.10	52.49	6.71	1269.77	503.66
7104.000	466.00	.00	.00	579.01	4134.00	592.03	.00	592.70	53.46	9.09	1416.95	565.42
7104.000	466.00	.00	.00	579.01	5523.00	593.43	.00	594.20	56.33	10.07	1817.73	735.89
8493.000	2389.00	.00	.00	591.20	2448.00	600.65	.00	601.02	39.12	6.42	1179.93	391.38
8493.000	2389.00	.00	.00	591.20	3649.00	602.36	.00	602.78	38.39	7.19	1704.34	588.91
8493.000	2389.00	.00	.00	591.20	4134.00	602.98	.00	603.42	38.09	7.44	1908.24	689.82
8493.000	2389.00	.00	.00	591.20	5523.00	604.60	.00	605.09	37.47	8.09	2471.67	902.32
10558.000	1065.50	.00	.00	594.44	1797.00	604.21	.00	604.36	23.72	4.72	1145.12	368.99
10558.000	1065.50	.00	.00	594.44	2635.00	605.77	.00	605.90	20.98	4.96	1772.97	588.37
10558.000	1065.50	.00	.00	594.44	3052.00	606.33	.00	606.47	20.06	5.02	2030.32	681.46
10558.000	1065.50	.00	.00	594.44	4074.00	607.83	.00	607.96	18.02	5.19	2785.80	959.71
* 11098.000	540.00	.00	.00	596.08	1797.00	605.69	603.25	606.76	84.50	8.29	216.73	195.49
11098.000	540.00	.00	.00	596.08	2695.00	606.93	.00	607.11	22.97	4.81	1568.38	562.35
11098.000	540.00	.00	.00	596.08	3052.00	607.45	.00	607.63	22.17	4.91	1791.06	648.21
11098.000	540.00	.00	.00	596.08	4074.00	608.83	.00	609.01	20.15	5.15	2450.72	907.69
* 11124.000	26.00	607.00	605.47	596.08	1797.00	607.41	.00	607.45	9.75	2.52	1770.77	575.37
11124.000	26.00	607.00	605.47	596.08	2695.00	608.41	.00	608.47	13.08	3.13	2236.60	745.24
11124.000	26.00	607.00	605.47	596.08	3052.00	608.70	.00	608.77	14.61	3.37	2380.83	798.47
11124.000	26.00	607.00	605.47	596.08	4074.00	609.41	.00	609.51	10.92	4.02	2752.64	936.62
11260.000	136.00	.00	.00	596.74	1797.00	607.54	.00	607.62	12.54	3.70	1545.56	507.46
11260.000	136.00	.00	.00	596.74	2695.00	608.58	.00	608.69	16.06	4.48	2005.74	672.52
11260.000	136.00	.00	.00	596.74	3052.00	608.89	.00	609.01	17.67	4.79	2152.58	726.06
11260.000	136.00	.00	.00	596.74	4074.00	609.66	.00	609.81	21.98	5.59	2541.09	868.97
* 11678.000	417.50	.00	.00	598.75	1797.00	608.21	.00	608.60	43.95	6.05	695.73	271.07
* 11678.000	417.50	.00	.00	598.75	2695.00	609.42	.00	609.79	42.24	6.52	1094.30	414.65
* 11678.000	417.50	.00	.00	598.75	3052.00	609.80	.00	610.18	42.31	6.71	1241.17	469.19
11678.000	417.50	.00	.00	598.75	4074.00	610.74	.00	611.13	42.84	7.19	1633.81	622.45

SECD	XLCH	ELTRD	ELLC	ELMIN	Q	CWSEL	CRWS	EG	10*KS	VCH	AREA	.OIK
12245.000	567.00	.00	.00	601.49	1797.00	610.60	.00	611.08	42.69	6.19	535.17	275.02
12245.000	567.00	.00	.00	601.49	2695.00	611.79	.00	612.36	46.28	7.11	799.98	396.15
12245.000	567.00	.00	.00	601.49	3052.00	612.19	.00	612.79	47.62	7.43	895.42	442.26
12245.000	567.00	.00	.00	601.49	4074.00	613.18	.00	613.87	51.09	8.24	1150.84	569.96
12745.000	500.00	.00	.00	603.90	1797.00	612.67	.00	613.50	53.21	6.83	393.52	246.36
12745.000	500.00	.00	.00	603.90	2695.00	614.20	.00	614.97	55.72	7.67	584.60	357.83
12745.000	500.00	.00	.00	603.90	3052.00	614.65	.00	615.46	57.34	8.18	659.26	403.03
12745.000	500.00	.00	.00	603.90	4074.00	615.77	.00	616.66	58.59	8.93	868.04	532.23
13620.000	875.00	.00	.00	608.99	1797.00	617.59	.00	618.13	52.18	6.54	534.83	248.76
13620.000	875.00	.00	.00	608.99	2695.00	619.02	.00	619.58	48.63	7.14	836.15	386.48
13620.000	875.00	.00	.00	608.99	3052.00	619.49	.00	620.06	48.07	7.36	950.39	440.19
13620.000	875.00	.00	.00	608.99	4074.00	620.67	.00	621.28	47.20	7.91	1259.05	592.98
14711.000	1091.00	.00	.00	615.33	1797.00	623.58	.00	624.16	58.44	7.39	638.67	235.06
14711.000	1091.00	.00	.00	615.33	2695.00	624.85	.00	625.50	60.19	8.33	958.55	347.37
14711.000	1091.00	.00	.00	615.33	3052.00	625.28	.00	625.95	60.41	8.62	1084.90	392.67
14711.000	1091.00	.00	.00	615.33	4074.00	626.41	.00	627.13	60.72	9.34	1428.65	522.61
15764.000	1053.00	.00	.00	619.41	1797.00	628.51	.00	628.92	35.74	5.90	727.84	300.61
15764.000	1053.00	.00	.00	619.41	2695.00	629.87	.00	630.32	35.74	6.59	1189.07	450.79
15764.000	1053.00	.00	.00	619.41	3052.00	630.33	.00	630.79	35.83	6.82	1369.11	509.85
15764.000	1053.00	.00	.00	619.41	4074.00	631.50	.00	631.99	36.01	7.39	1851.99	678.89
17373.000	1609.00	.00	.00	625.49	1797.00	634.52	.00	634.83	37.76	6.16	720.88	292.44
17373.000	1609.00	.00	.00	625.49	2695.00	635.88	.00	636.22	37.51	6.81	1039.65	440.02
17373.000	1609.00	.00	.00	625.49	3052.00	636.35	.00	636.70	37.49	7.03	1160.11	498.47
17373.000	1609.00	.00	.00	625.49	4074.00	637.55	.00	637.93	37.63	7.59	1491.93	664.15
* 18341.000	968.50	.00	.00	632.86	1797.00	641.20	640.56	642.39	217.79	10.23	303.99	121.77
* 18341.000	968.50	.00	.00	632.86	2695.00	642.39	641.61	643.94	227.87	11.95	414.12	178.53
* 18341.000	968.50	.00	.00	632.86	3052.00	642.80	.00	644.48	231.36	12.53	457.97	200.65
* 18341.000	968.50	.00	.00	632.86	4074.00	643.87	.00	645.84	234.54	13.86	590.40	266.02
* 18581.000	240.60	.00	.00	634.69	1797.00	645.06	.00	645.94	102.68	11.74	507.81	177.34
* 18581.000	240.60	.00	.00	634.69	2695.00	646.70	.00	647.64	102.42	12.96	737.77	266.29
* 18581.000	240.60	.00	.00	634.69	3052.00	647.28	.00	648.23	101.56	13.31	826.14	302.84
* 18581.000	240.60	.00	.00	634.69	4074.00	648.68	.00	649.66	100.48	14.22	1066.26	406.42
* 18643.000	62.00	646.69	640.99	636.29	1797.00	649.89	.00	650.06	34.45	5.94	900.54	306.15
* 18643.000	62.00	646.69	640.99	636.29	2695.00	650.58	.00	650.87	57.53	7.95	1020.01	355.32
* 18643.000	62.00	646.69	640.99	636.29	3052.00	650.79	.00	651.13	67.49	8.70	1058.75	371.52
* 18643.000	62.00	646.69	640.99	636.29	4074.00	651.31	.00	651.81	97.63	10.73	1155.19	412.31
* 18704.000	61.00	.00	.00	636.88	1797.00	650.03	.00	650.21	17.09	4.38	918.08	434.73
* 18704.000	61.00	.00	.00	636.88	2695.00	650.80	.00	651.12	28.09	5.89	1054.55	508.53
* 18704.000	61.00	.00	.00	636.88	3052.00	651.05	.00	651.43	32.71	6.45	1100.48	533.65
* 18704.000	61.00	.00	.00	636.88	4074.00	651.68	.00	652.23	46.26	7.96	1219.76	599.02

SECTNO	XLCH	ELTRD	ELLC	ELMIN	Q	CWSEL	CRWS	EG	10*AS	VCH	AREA	.0IK
* 19353.000	649.00	.00	.00	645.48	1797.00	654.78	654.78	656.32	256.09	10.52	253.27	111.86
* 19353.000	649.00	.00	.00	645.48	2695.00	655.71	655.71	657.80	307.99	12.54	336.11	153.56
* 19353.000	649.00	.00	.00	645.48	3052.00	656.10	656.10	658.31	311.72	13.03	371.61	172.86
* 19353.000	649.00	.00	.00	645.48	4074.00	657.09	657.09	659.63	320.71	14.25	465.88	227.49
* 19593.000	240.00	.00	.00	648.66	1797.00	659.91	.00	661.57	183.89	14.38	376.18	132.52
* 19593.000	240.00	.00	.00	648.66	2695.00	661.66	.00	662.99	148.19	14.32	607.75	221.39
* 19593.000	240.00	.00	.00	648.66	3052.00	662.22	.00	663.60	150.84	14.88	665.71	248.50
* 19593.000	240.00	.00	.00	648.66	4074.00	663.62	.00	665.15	156.79	16.63	822.23	325.35
* 19679.000	86.00	670.11	654.67	648.67	1797.00	674.06	.00	674.10	3.28	2.82	1916.14	991.63
* 19679.000	86.00	670.11	654.67	648.67	2695.00	674.98	.00	675.02	4.23	3.28	2813.03	1310.36
* 19679.000	86.00	670.11	654.67	648.67	3052.00	675.28	.00	675.33	5.11	3.64	2896.02	1350.61
* 19679.000	86.00	670.11	654.67	648.67	4074.00	676.00	.00	676.07	7.90	4.61	3096.66	1449.22
* 19740.000	61.00	.00	.00	649.20	1797.00	674.09	.00	674.11	1.05	1.52	2451.90	1752.25
* 19740.000	61.00	.00	.00	649.20	2695.00	674.99	.00	675.04	1.96	2.15	2686.32	1923.78
* 19740.000	61.00	.00	.00	649.20	3052.00	675.29	.00	675.35	2.37	2.38	2767.94	1983.51
* 19740.000	61.00	.00	.00	649.20	4074.00	676.02	.00	676.11	3.66	3.04	2967.24	2130.06
20145.000	404.50	.00	.00	652.68	1797.00	674.15	.00	674.17	1.62	1.90	2879.43	1413.15
20145.000	404.50	.00	.00	652.68	2695.00	675.11	.00	675.14	2.96	2.65	3163.47	1567.68
20145.000	404.50	.00	.00	652.68	3052.00	675.44	.00	675.47	3.54	2.93	3263.67	1622.43
20145.000	404.50	.00	.00	652.68	4074.00	676.24	.00	676.30	5.36	3.69	3513.52	1759.16
20757.000	612.00	.00	.00	657.95	1797.00	674.28	.00	674.29	2.71	2.03	3501.65	1090.81
20757.000	612.00	.00	.00	657.95	2695.00	675.33	.00	675.36	4.51	2.73	3926.73	1268.74
20757.000	612.00	.00	.00	657.95	3052.00	675.70	.00	675.73	5.23	2.99	4080.16	1334.38
20757.000	612.00	.00	.00	657.95	4074.00	676.63	.00	676.68	7.31	3.66	4477.01	1506.33
* 21207.000	450.00	.00	.00	661.83	731.00	674.38	.00	674.38	1.11	1.07	2519.28	692.89
* 21207.000	450.00	.00	.00	661.83	1102.00	675.50	.00	675.50	1.66	1.39	2927.53	856.00
* 21207.000	450.00	.00	.00	661.83	1250.00	675.89	.00	675.90	1.86	1.51	3076.99	917.59
* 21207.000	450.00	.00	.00	661.83	1675.00	676.69	.00	676.90	2.41	1.80	3458.57	1078.64

Fuda Creek (FC.IN)

SUMMARY PRINTOUT TABLE 150

SECD	Q	CWSEL	DIFWSP	DIFWSX	DIFKMS	TOPWID	XLCH
198.000	2448.00	558.81	.00	.00	-1.19	517.80	.00
198.000	3649.00	560.16	1.35	.00	.16	694.44	.00
198.000	4134.00	560.65	.49	.00	.65	794.10	.00
198.000	5523.00	561.84	1.19	.00	1.84	1035.48	.00
1485.000	2448.00	563.99	.00	5.18	.00	75.79	1287.00
1485.000	3649.00	565.42	1.43	5.26	.00	403.29	1287.00
1485.000	4134.00	565.90	.48	5.25	.00	431.05	1287.00
1485.000	5523.00	567.13	1.23	5.28	.00	502.25	1287.00
2448.500	2448.00	567.89	.00	3.90	.00	272.55	963.90
2448.900	3649.00	569.26	1.37	3.84	.00	415.40	963.90
2448.900	4134.00	569.73	.47	3.83	.00	449.55	963.90
2448.900	5523.00	570.92	1.19	3.79	.00	506.52	963.90
2570.500	2448.00	568.45	.00	.56	.00	275.83	121.60
2570.500	3649.00	569.79	1.34	.53	.00	415.27	121.60
2570.500	4134.00	570.25	.46	.52	.00	449.16	121.60
2570.500	5523.00	571.43	1.17	.51	.00	504.86	121.60
2592.500	2448.00	570.55	.00	2.10	.00	463.58	22.00
2592.500	3649.00	571.71	1.15	1.92	.00	518.96	22.00
2592.500	4134.00	572.02	.31	1.77	.00	533.96	22.00
2592.500	5523.00	572.73	.71	1.31	.00	568.21	22.00
2623.900	2448.00	570.58	.00	.03	.00	461.18	31.40
2623.900	3649.00	571.74	1.16	.04	.00	516.79	31.40
2623.900	4134.00	572.06	.31	.04	.00	531.95	31.40
2623.900	5523.00	572.78	.72	.05	.00	566.69	31.40
3417.000	2448.00	571.59	.00	1.01	.00	371.54	793.10
3417.000	3649.00	572.95	1.36	1.21	.00	416.04	793.10
3417.000	4134.00	573.38	.43	1.32	.00	429.95	793.10
3417.000	5523.00	574.42	1.05	1.64	.00	464.17	793.10
4002.000	2448.00	572.51	.00	.92	.00	261.11	585.00
4002.000	3649.00	573.97	1.46	1.02	.00	344.74	585.00
4002.000	4134.00	574.44	.48	1.07	.00	372.12	585.00
4002.000	5523.00	575.63	1.18	1.20	.00	422.00	585.55
4463.000	2448.00	574.53	.00	2.02	.00	381.02	461.00
4463.000	3649.00	575.87	1.33	1.90	.00	461.74	461.00
4463.000	4134.00	576.33	.46	1.98	.00	479.20	461.00
4463.000	5523.00	577.50	1.17	1.87	.00	522.74	461.00

SECMO	Q	CWSEL	DIFWSP	DIFWSX	DIFKVS	TOPWID	XLCH
5203.000	2449.00	578.92	.00	4.39	.00	282.09	800.00
5263.000	3649.00	580.15	1.23	4.28	.00	329.07	800.00
5267.000	4134.00	580.59	.43	4.25	.00	340.57	800.00
5263.000	5523.00	581.71	1.13	4.21	.00	370.96	800.00
5993.000	2448.00	583.08	.00	4.16	.00	273.69	720.00
5985.000	3649.00	584.35	1.27	4.20	.00	364.47	720.00
5983.000	4134.00	584.79	.44	4.21	.00	395.99	720.00
5983.000	5523.00	585.90	1.12	4.20	.00	432.76	720.00
6638.000	2448.00	587.58	.00	4.50	.00	206.35	655.00
6638.000	3649.00	588.97	1.39	4.62	.00	239.98	655.00
6638.000	4134.00	589.43	.46	4.64	.00	251.12	655.00
6638.000	5523.00	590.57	1.14	4.66	.00	273.13	655.00
7104.000	2448.00	589.83	.00	2.25	.00	218.05	466.00
7104.000	3649.00	591.47	1.64	2.50	.00	255.44	466.00
7104.000	4134.00	592.03	.56	2.60	.00	269.21	466.00
7104.000	5523.00	593.43	1.40	2.87	.00	301.25	466.00
9493.000	2448.00	600.65	.03	10.82	.00	289.87	2389.00
9493.000	3649.00	602.36	1.72	10.89	.00	321.44	2389.00
9493.000	4134.00	602.98	.62	10.96	.00	332.90	2389.00
9493.000	5523.00	604.60	1.62	11.17	.00	362.71	2389.00
10558.000	1797.00	604.21	.00	3.57	.00	366.39	1065.50
10558.000	2695.00	605.77	1.55	3.41	.00	441.19	1065.50
10558.000	3052.00	606.33	.57	3.35	.00	468.40	1065.50
10558.000	4074.00	607.83	1.50	3.23	.00	540.47	1065.50
11098.000	1797.00	605.69	.00	1.48	.00	30.10	540.00
11098.000	2695.00	606.93	1.24	1.17	.00	418.27	540.00
11098.000	3052.00	607.45	.52	1.12	.00	443.14	540.00
11098.000	4074.00	608.83	1.38	1.00	.00	509.76	540.00
11124.000	1797.00	607.41	.00	1.71	.00	441.08	26.00
11124.000	2695.00	608.41	1.00	1.47	.00	489.27	26.00
11124.000	3052.00	608.70	.29	1.25	.00	503.25	26.00
11124.000	4074.00	609.41	.71	.58	.00	537.63	26.00
11260.000	1797.00	607.54	.00	.13	.00	415.64	136.00
11260.000	2695.00	608.58	1.04	.17	.00	465.87	136.00
11260.000	3052.00	608.89	.31	.19	.00	460.80	136.00
11260.000	4074.00	609.66	.77	.25	.00	518.22	136.00
11678.000	1797.00	608.21	.00	.68	.00	288.48	417.50
11678.000	2695.00	609.42	1.21	.84	.00	373.26	417.50
11678.000	3052.00	609.80	.38	.91	.00	399.97	417.50
11678.000	4074.00	610.74	.94	1.08	.00	424.84	417.50

SECKO	Q	CNSEL	DIFVSP	DIFVSN	DIFKMS	TOPWID	XLCH
12245.000	1797.00	610.50	.00	2.39	.00	208.73	367.00
12245.000	2695.00	611.79	1.19	2.37	.00	236.11	567.00
12245.000	3052.00	612.19	.40	2.39	.00	245.23	567.00
12245.000	4074.00	613.18	.99	2.44	.00	268.12	567.00
12745.000	1797.00	612.87	.00	2.27	.00	125.33	500.00
12745.000	2695.00	614.20	1.33	2.41	.00	161.40	500.00
12745.000	3052.00	614.65	.45	2.46	.00	173.48	500.00
12745.000	4074.00	615.77	1.12	2.59	.00	196.70	500.00
13620.000	1797.00	617.59	.00	4.72	.00	188.28	875.00
13620.000	2695.00	619.02	1.43	4.82	.00	235.02	875.00
13620.000	3052.00	619.49	.47	4.84	.00	250.46	875.00
13620.000	4074.00	620.67	1.18	4.90	.00	273.33	875.00
14711.000	1797.00	623.58	.00	5.99	.00	224.90	1091.00
14711.000	2695.00	624.85	1.27	5.82	.00	282.14	1091.00
14711.000	3052.00	625.28	.44	5.79	.00	294.87	1091.00
14711.000	4074.00	626.41	1.12	5.74	.00	317.98	1091.00
15764.000	1797.00	628.51	.00	4.93	.00	290.53	1053.00
15764.000	2695.00	629.67	1.36	5.02	.00	384.56	1053.00
15764.000	3052.00	630.33	.46	5.05	.00	401.14	1053.00
15764.000	4074.00	631.50	1.17	5.09	.00	429.51	1053.00
17373.000	1797.00	634.52	.00	6.01	.00	215.04	1609.00
17373.000	2695.00	635.88	1.36	6.01	.00	251.33	1609.00
17373.000	3052.00	636.35	.47	6.02	.00	262.68	1609.00
17373.000	4074.00	637.55	1.20	6.05	.00	291.66	1609.00
* 18341.000	1797.00	641.20	.00	6.62	.00	82.43	968.50
* 18341.000	2695.00	642.39	1.19	6.51	.00	103.66	968.50
* 18341.000	3052.00	642.80	.41	6.45	.00	112.59	968.50
* 18341.000	4074.00	643.87	1.07	6.31	.00	136.02	968.50
* 18581.000	1797.00	645.06	.00	3.86	.00	121.94	240.00
* 18581.000	2695.00	646.70	1.65	4.32	.00	152.59	240.00
* 18581.000	3052.00	647.28	.57	4.48	.00	160.98	240.00
* 18581.000	4074.00	648.68	1.40	4.81	.00	181.93	240.00
* 18643.000	1797.00	649.89	.00	4.83	.00	167.89	62.00
* 18643.000	2695.00	650.59	.69	3.88	.00	178.23	62.00
* 18643.000	3052.00	650.79	.21	3.52	.00	181.45	62.00
* 18643.000	4074.00	651.31	.52	2.63	.00	190.66	62.00
* 18704.000	1797.00	650.03	.00	.14	.00	163.30	61.00
* 18704.000	2695.00	650.80	.78	.22	.00	180.96	61.00
* 18704.000	3052.00	651.05	.25	.26	.00	184.72	61.00
* 18704.000	4074.00	651.68	.62	.37	.00	197.66	61.00

050CT91 16:36:08

SECNO	Q	CVSEL	DIFWSP	DIFWSX	DIFKMS	TOPYID	XLCI
* 19353.000	1797.00	654.78	.00	4.75	.00	86.47	649.00
* 19353.000	2695.00	655.71	.93	4.91	.00	91.13	649.00
* 19353.000	3052.00	656.10	.35	5.05	.00	93.06	649.00
* 19353.000	4074.00	657.09	.99	5.41	.00	97.99	649.00
* 19593.000	1797.00	659.91	.00	5.13	.00	83.90	240.00
* 19593.000	2695.00	661.66	1.75	5.95	.00	104.96	240.00
* 19593.000	3052.00	662.22	.55	6.12	.00	107.68	240.00
* 19593.000	4074.00	663.62	1.40	6.53	.00	114.70	240.00
* 19679.000	1797.00	674.06	.00	14.15	.00	152.84	86.00
* 19679.000	2695.00	674.98	.91	13.31	.00	273.67	86.00
* 19679.000	3052.00	675.28	.30	13.06	.00	276.51	86.00
* 19679.000	4074.00	676.00	.72	12.37	.00	282.97	86.00
* 19740.000	1797.00	674.09	.00	.03	.00	253.55	61.00
* 19740.000	2695.00	674.99	.90	.01	.00	266.36	61.00
* 19740.000	3052.00	675.29	.30	.02	.00	270.67	61.00
* 19740.000	4074.00	676.02	.72	.02	.00	278.40	61.00
* 20145.000	1797.00	674.15	.00	.06	.00	286.91	404.50
* 20145.000	2695.00	675.11	.96	.12	.00	301.59	404.50
* 20145.000	3052.00	675.44	.33	.14	.00	306.14	404.50
* 20145.000	4074.00	676.24	.80	.22	.00	317.20	404.50
* 20757.000	1797.00	674.26	.00	.13	.00	395.61	612.00
* 20757.000	2695.00	675.33	1.06	.23	.00	411.00	612.00
* 20757.000	3052.00	675.70	.37	.27	.00	417.67	612.00
* 20757.000	4074.00	676.63	.93	.39	.00	434.44	612.00
* 21207.000	731.00	674.38	.00	.10	.00	355.75	450.00
* 21207.000	1102.00	675.50	1.12	.16	.00	370.61	450.00
* 21207.000	1250.00	675.89	.39	.19	.00	376.69	450.00
* 21207.000	1675.00	676.89	1.00	.26	.00	391.78	450.00

SUMMARY OF ERRORS AND SPECIAL NOTES

CAUTION SECNO=	11098.000	PROFILE=	1	WSEL ASSUMED BASED ON MIN DIFF
CAUTION SECNO=	11098.000	PROFILE=	1	20 TRIALS ATTEMPTED TO BALANCE WSEL
CAUTION SECNO=	19353.000	PROFILE=	1	CRITICAL DEPTH ASSUMED
CAUTION SECNO=	19353.000	PROFILE=	1	PROBABLE MINIMUM SPECIFIC ENERGY
CAUTION SECNO=	19353.000	PROFILE=	1	20 TRIALS ATTEMPTED TO BALANCE WSEL
CAUTION SECNO=	19353.000	PROFILE=	2	CRITICAL DEPTH ASSUMED
CAUTION SECNO=	19353.000	PROFILE=	2	PROBABLE MINIMUM SPECIFIC ENERGY
CAUTION SECNO=	19353.000	PROFILE=	2	20 TRIALS ATTEMPTED TO BALANCE WSEL
CAUTION SECNO=	19353.000	PROFILE=	3	CRITICAL DEPTH ASSUMED
CAUTION SECNO=	19353.000	PROFILE=	3	PROBABLE MINIMUM SPECIFIC ENERGY
CAUTION SECNO=	19353.000	PROFILE=	3	20 TRIALS ATTEMPTED TO BALANCE WSEL
CAUTION SECNO=	19353.000	PROFILE=	4	CRITICAL DEPTH ASSUMED
CAUTION SECNO=	19353.000	PROFILE=	4	MINIMUM SPECIFIC ENERGY

Floodway Output

Fuda Creek HEC-2 Output Floodway

Study Contractor : Hayes, Seay, Mattern & Mattern
Contract Number : EMW-80-C-3101
HSMM Number : 2373

* HEC-2 WATER SURFACE PROFILES *
* *
* Version 4.6.2; May 1991 *
* *
* RUN DATE 05OCT91 TIME 16:38:57 *

* U.S. ARMY CORPS OF ENGINEERS *
* HYDROLOGIC ENGINEERING CENTER *
* 609 SECOND STREET, SUITE D *
* DAVIS, CALIFORNIA 95616-4687 *
* (916) 756-1104 *

```
X X XXXXXX XXXX XXXX
X X X X X X
X X X X X X
XXXXXXXX XXXX X XXXX XXXX
X X X X X
X X X X X
X X XXXXXX XXXX XXXXXX
```

HAYES, SEAY, MATTERN & MATTER, INC.

ROANOKE, VIRGINIA - GREENSBORO, NORTH CAROLINA

COMMISSION NUMBER: 2373
INPUT FILE NAME: FC_FW.HEC
OUTPUT FILE NAME: FC_FW.OUT

THIS RUN EXECUTED 05OCT91 16:38:57

HEC-2 WATER SURFACE PROFILES

Version 4.6.2; May 1991

T1 Hayes, Seay, Mattern & Mattern Cabarrus County, NC FIS
 T2 Proj. No. EMW-90-C-3101 Eng:LJM/EKL ET:TFH Comm. No. 2373
 T3 Fuda Creek (FC.IN) Date: 10/05/91 100-Year Event

J1 ICHECK INQ HINV IDIR STRT METRIC HVINS Q WSEL FQ
 4.0 0.0043 560.0
 J2 NPRDF IPLOT PRFVS XSECV XSECH FN ALLDC IBW CHNIM ITRACE
 1. -1.0

J3 VARIABLE CODES FOR SUMMARY PRINTOUT

110. 200.

J5 LPRNT NUMSEC *****REQUESTED SECTION NUMBERS*****

-10.

NC	0.18	0.18	0.05	0.1	0.3					
NH	7.	1.	4904.	0.21	4945.	0.15	4989.	0.056	5021.5	0.14
NH	5070.	0.21	5129.	1.	6301.	0.	0.	0.	0.	0.
QT	8.	2448.	3649.	4134.	5523.	4134.	1217.	1909.	3162.	
ET	0.00	0.00	0.00	0.00	0.00	10.41	0.00	0.00	0.00	0.00

```

=====
HEC-2 Input file created with CodeH2
Version: 3.79
CodeH2 Copyrighted 1986 - 1991
Run Date: Saturday October 5, 1991
Run Time: 16:38:41
=====
    
```

```

=====
The Following Options Have Been Activated :
1. FLOODWAY Option.
2. HEC1 Option.
3. SUMMARY_150 Option.
=====
    
```

Cross Section A
Cross Section A (HSMH Draft)

X1	198.	20.	4989.	5021.5	198.	198.	0.	0.	0.12
GR	575.	4101.	570.	4173.	585.	4231.	555.76	4904.	
GR	555.27	4945.	555.	4967.	555.51	4989.	547.6	4999.9	
GR	547.61	5000.	548.23	5006.	555.08	5021.5	556.23	5070.	
GR	557.77	5129.	560.	5214.	585.	5907.	575.	6301.	
NH	7.	1.	4886.	0.21	4929.	0.13	5011.5	0.12	
NH	5117.	0.21	5185.	1.	5372.	0.	0.	0.00	
ET	0.00	0.00	0.00	0.00	0.00	7.41	0.00	0.00	

Cross Section B
Cross Section B (HSMH Draft)

X1	1485.	19.	4985.	5011.5	1287.	1287.	0.	0.	0.11
GR	575.	4403.	570.	4568.	565.	4772.	561.91	4929.	
GR	560.9	4300.5	550.6	4985.	553.85	4990.	552.87	5000.	
GR	553.87	5009.5	557.94	5011.5	560.	5034.	563.47	5117.	
GR	565.	5151.	566.98	5185.	570.	5237.	0.	0.	
NH	7.	1.	4812.	0.2	4897.	0.11	5018.5	0.11	
NH	5085.	0.21	5129.	1.	5538.	0.	0.	0.	
ET	0.00	0.00	0.00	0.00	0.00	7.11	0.00	0.00	
X1	2448.9	49.	4988.	5018.5	963.9	963.9	0.	0.00	
GR	594.47	3456.	589.47	3708.	588.24	584.47	583.75	3972.	
GR	579.47	4139.	577.17	4313.	574.47	4517.	569.47	4665.	
GR	567.78	4222.	566.81	4897.	566.34	4937.9	562.05	4987.49	
GR	562.04	4987.6	561.98	4987.7	561.92	4987.81	561.86	4988	
GR	561.74	4988.1	559.44	4992.	557.04	4995.	557.14	5006.	
GR	559.44	5010.5	562.14	5013.	564.22	5017.91	564.3	5018.1	
GR	564.34	5018.2	564.35	5018.31	564.35	5018.42	564.36	5018.6	
GR	567.44	5067.9	567.45	5068.	568.46	5085.	570.94	5129.	
GR	571.64	5142.	574.47	5194.	578.76	5261.	579.47	5272.	
GR	584.47	5410.	589.47	5445.	590.92	5472.	583.82	5392.	
							0.	0.	

Cross Section C
Cross Section C (HSMH Draft)

NC	7.	1.	4812.	0.3	0.5	0.11	5018.6	0.11	
NH	5085.	0.21	5129.	1.	4897.	0.	0.	0.	
ET	0.00	0.00	0.00	0.00	0.00	7.11	0.00	0.00	
X1	2570.5	49.	4988.	5018.6	121.6	121.6	0.	0.00	
X3	10.						0.	0.00	
GR	595.	3466.	590.	3708.	588.77	3766.	588.1	3972.	
GR	580.	4139.	577.7	4313.	575.	4517.	584.28	4665.	
GR	588.31	4812.	567.34	4897.	566.87	4937.9	570.	4987.49	
GR	562.57	4987.6	562.51	4987.7	562.45	4987.81	562.52	4988.	
GR	559.37	4988.1	559.97	4992.	557.57	4995.	557.67	5006.	
GR	564.87	5018.2	564.88	5013.	564.79	5017.91	564.83	5018.1	
GR	567.87	5067.9	567.98	5068.	568.88	5018.42	564.89	5018.6	
GR	572.17	5142.	575.	5194.	568.99	5085.	571.47	5129.	
GR	585.	5410.	590.	5445.	591.45	5472.	584.35	5392.	
							0.	0.	

SB	1.25	1.79	2.60	0.00	21.36	0.00	235.10	0.22	557.57	557.57
NH	7.	1.	4812.	0.2	4897.	0.11	4988.	0.056	557.57	557.57
NH	5085.	0.21	5129.	1.	5538.	0.	0.	0.	0.	0.11
ET	0.00	0.00	0.00	0.00	0.00	7.11	4900.00	5050.00	0.00	0.00

Hickory Ridge Road (SR 1133)

X1	2592.5	49.	4988.	5018.6	22.	22.	22.	0.00	0.00	0.00
X2	0.00	0.00	1.00	567.57	569.67	0.00	0.00	0.00	569.67	569.67
X3	10.	-49.								
PT	3466.	3944.	595.02	595.	3708.	590.97	590.	3766.	569.77	588.77
BT	4313.	4665.	585.68	585.	3972.	585.	584.28	4139.	590.	580.
BT	4937.9	4987.6	577.7	577.7	4517.	575.21	575.	4526.	582.55	580.
BT	4987.91	4992.	573.2	570.	4812.	571.3	568.31	4897.	570.2	567.34
BT	5006.	5017.91	569.67	566.87	4938.	569.67	566.87	4987.49	569.67	562.58
BT	5018.2	5018.5	569.67	562.57	4987.7	572.67	562.51	4987.81	572.67	567.47
BT	5018.5	5068.	572.67	567.47	4988.	572.67	567.47	4988.1	572.67	567.47
BT	5129.	5261.	572.58	567.48	4995.	572.69	567.49	5000.	572.71	567.51
BT	5410.	5538.	572.73	567.53	5010.5	572.74	567.54	5013.	572.75	567.55
BT	595.	580.	572.77	567.57	5019.	572.77	567.57	5018.1	572.77	567.55
BT	568.31	562.57	572.77	566.52	5018.31	572.77	565.94	5018.42	569.77	565.36
BT	4988.1	4988.1	569.77	564.89	5018.6	569.77	564.89	5057.9	570.27	567.97
BT	5018.5	5068.	569.77	567.98	5085.	570.21	563.99	5102.	570.15	570.
BT	5068.	5129.	570.27	567.98	5085.	570.21	563.99	5194.	575.02	575.
BT	5129.	5261.	571.49	571.47	5142.	572.19	572.17	5194.	575.02	575.
BT	5410.	5538.	579.31	579.29	5272.	580.02	580.	584.37	584.37	584.35
BT	595.	580.	585.02	585.	5445.	590.02	590.	591.47	591.47	591.45
BT	3466.	3944.	595.02	595.	0.	0.	0.	0.	0.	0.
BT	4139.	4612.	590.	588.77	3766.	3766.	585.	3944.	584.28	3972.
BT	4987.6	4988.1	577.7	4313.	575.	4517.	574.7	4526.	570.	4605.
BT	4988.1	4988.1	567.34	4897.	566.87	4937.9	566.87	4938.	562.58	4987.49
BT	5010.5	5010.5	562.51	4987.7	567.47	4987.81	565.68	4987.91	564.06	4988.
BT	5018.2	5018.2	559.97	4992.	557.57	4995.	557.57	5000.	557.67	5006.
BT	5067.9	5067.9	562.67	5013.	564.75	5017.91	567.57	5018.	564.53	5018.1
BT	5142.	5194.	564.88	5018.31	564.88	5018.42	564.89	5018.5	564.89	5018.6
BT	590.	590.	567.98	5068.	568.99	5095.	570.	5102.	571.47	5129.
BT	595.	595.	575.	5194.	579.29	5261.	580.	5272.	564.35	5392.
BT	595.	595.	590.	5445.	591.45	5472.	595.	5538.	0.	0.
BT	4812.	5129.	0.2	0.2	4897.	0.11	4988.	0.056	5018.5	0.11
BT	0.00	0.00	0.00	0.00	5538.	0.	0.	0.	0.	0.
BT	2623.9	49.	4338.	5018.5	0.00	7.11	4900.00	5050.00	0.00	0.00
BT	595.08	4139.	590.08	3708.	588.85	3766.	585.08	3944.	564.36	3972.
BT	563.39	4812.	577.78	4313.	575.08	4517.	574.78	4526.	570.08	4665.
BT	562.65	4987.6	567.42	4897.	566.95	4937.9	566.95	4938.	562.66	4987.49
BT	560.05	5010.5	562.53	4987.7	562.53	4987.81	562.47	4987.91	562.41	4988.
BT	564.95	5018.2	560.05	4992.	557.65	4995.	557.65	5006.	557.75	5006.
BT	568.05	5067.9	562.75	5013.	564.83	5017.91	564.87	5018.	564.91	5018.1
BT	572.25	5142.	564.96	5018.31	564.96	5018.42	564.97	5018.5	564.97	5018.6
BT	585.08	5410.	575.08	5068.	559.07	5085.	570.08	5102.	571.55	5129.
BT	590.08	5445.	590.08	5445.	579.37	5261.	580.08	5272.	584.43	5392.
BT	590.08	5445.	590.08	5445.	591.53	5472.	595.08	5538.	0.	0.

RC	7.	1.	4782.	0.1	0.3	0.1	1984.5	0.056	5026.	0.12
NH	5094.	0.21	5130.	1.	5265.	0.	0.	0.	0.	0.
ET	0.00	0.00	0.00	0.00	0.09	7.41	0.00	0.00	0.00	0.00

Cross Section C (HSMW Draft)

X1	3417.	19.	4984.5	5026.	793.1	793.1	793.1	4601.	0.	4734.
GR	590.	3663.	585.	3993.	580.	4297.	575.	570.	570.	4994.
GR	569.25	4782.	567.43	4899.	566.26	4974.5	566.26	4984.5	560.05	5084.
GR	559.53	5000.	560.01	5065.	565.87	5026.	567.11	5036.	575.	0.
GR	590.	5114.	581.7	5130.	595.	5161.	590.	5265.	0.	0.
NH	7.	1.	4825.	0.21	4567.	0.12	4984.5	0.058	5026.	0.12
NH	5110.	0.21	5150.	1.	5472.	9.	0.	0.	0.	0.

Cross Section C-1
Cross Section D (HSMW Draft)

X1	4002.	23.	4984.5	5026.	585.	585.	585.	4753.	0.	4825.
GR	595.	4003.	590.	4107.	585.	4485.	580.	575.	575.	4994.
GR	575.	4943.	572.96	4897.	570.	4952.	568.88	4984.5	562.67	5110.
GR	552.25	5000.	562.63	5006.	558.49	5026.	570.	5069.	571.15	5367.
GR	572.56	5150.	575.	5247.	580.	5300.	585.	5354.	590.	0.
GR	595.	5407.	600.	5431.	605.	5472.	0.	0.	0.	0.
NH	7.	1.	4745.	0.21	4567.	0.13	4979.5	0.058	5009.	0.14
NH	5036.	0.21	5071.	1.	5101.	0.	0.	0.	0.	0.
ET	0.00	0.00	0.00	0.00	0.00	8.41	0.00	0.00	0.00	0.00

Cross Section E (HSMW Draft)

X1	4463.	22.	4979.5	5009.	461.	461.	461.	4289.	0.	4420.
GR	600.	3500.	595.	4122.	590.	4223.	585.	580.	580.	4979.5
GR	575.	4586.	573.49	4745.	572.33	4867.	571.39	4965.5	570.75	5009.
GR	565.8	4985.5	565.8	4994.5	564.31	5000.	565.77	5008.	571.12	5071.
GR	575.9	5019.	580.	5036.	585.	5048.	590.	5068.	590.94	0.
GR	595.	5084.	600.	5101.	0.	0.	0.	0.	0.	0.
NH	7.	1.	4832.	0.21	4905.	0.13	4979.5	0.058	5009.	0.13
NH	5088.	0.21	5117.	1.	5240.	0.	0.	0.	0.	0.
ET	0.00	0.00	0.00	0.00	0.00	9.41	0.00	0.00	0.00	0.00

Cross Section D-1A
Cross Section F (HSMW Draft)

X1	5263.	24.	4979.5	5009.	800.	800.	800.	4700.	0.	4805.
GR	600.	4270.	595.	4570.	590.	4630.	585.	580.	580.	4979.5
GR	578.58	4832.	575.	4900.	575.06	4905.	575.84	4965.5	575.2	5008.
GR	571.25	4985.5	570.25	4994.5	568.76	4999.9	568.78	5000.	570.22	5130.
GR	575.57	5009.	575.	5030.	577.9	5088.	579.35	5117.	580.	0.

GR	585.	5160.	590.	5190.	595.	5225.	500.	5240.	0.	0.
NH	7	1.	4829.	0.23	4910.	0.16	4362.5	0.057	5007.7	0.16
NH	5106.	0.23	5182.	1.	5387.	0.	0.	0.	0.	0.
ET	0.00	0.00	0.00	0.00	0.00	10.41	0.00	0.00	0.00	0.00

Cross Section D-2 (HSMW Draft)

X1	5985.	26.	4982.5	720.	720.	720.	720.	4713.	0.	4763.
GR	610.	4344.	605.	4435.	600.	4636.	595.	4982.5	590.	4982.58
GR	585.07	4829.	585.	4830.	581.96	4910.	575.21	5006.8	579.21	5007.65
GR	575.26	4987.68	574.26	4995.33	572.77	5000.	574.23	5182.	585.	5241.
GR	579.58	5007.7	580.	5015.	582.01	5106.	583.69	5351.	610.	5373.
GR	590.	5294.	595.	5313.	600.	5342.	605.	0.	0.	0.
GR	515.	5387.	0.	0.	0.	0.	0.	0.	0.	0.
NH	7.	1.	4860.	0.25	4928.	0.18	4965.5	0.057	5005.5	0.18
NH	5086.	0.25	5149.	1.	5237.	0.	0.	0.	0.	0.
ET	0.00	0.00	0.00	0.00	0.00	9.41	0.00	0.00	0.00	0.00

Cross Section D-3

X1	6638.	23.	4986.5	5006.5	655.	655.	655.	4768.	0.	4793.
GR	615.	4605.	610.	4690.	605.	4719.	600.	4928.	595.	4986.5
GR	590.	4834.	588.12	4860.	585.	4903.	583.75	5006.5	585.	5047.
GR	577.05	4996.5	576.42	5000.	577.02	5004.5	579.55	5149.	600.	5172.
GR	588.75	5086.	590.	5099.	595.	5130.	597.26	0.	0.	0.
GR	605.	5195.	610.	5208.	615.	5237.	0.	0.	0.	0.
NH	7.	1.	4887.	0.25	4929.	0.18	4986.5	0.057	5006.5	0.18
NH	5045.	0.25	5088.	1.	5134.	0.	0.	0.	0.	0.
ET	0.00	0.00	0.00	0.00	0.00	10.41	0.00	0.00	0.00	0.00

Cross Section E

X1	7104.	23.	4966.5	5006.5	466.	466.	466.	4757.	0.	4847.
GR	610.	4542.	605.	4633.	600.	4692.	595.	4986.5	590.	4986.5
GR	588.21	4887.	586.34	4929.	585.	4959.	585.	5004.5	583.41	5006.5
GR	579.64	4996.5	579.01	4999.9	579.02	5000.	579.61	5088.	595.	5094.
GR	583.63	5016.	585.	5045.	590.	5070.	593.75	0.	0.	0.
GR	600.	5106.	605.	5115.	610.	5134.	0.	0.	0.	0.
NH	7.	1.	4904.	0.26	4933.	0.19	4986.	0.057	5011.	0.19
NH	5106.	0.26	5158.	1.	5241.	0.	0.	0.	0.	0.

Cross Section F

Rebinson Church Road (SR 1168)

X1	11124.	51.	4984.5	5014.6	26.	26.	0.00	0.00	0.00	0.00
X2	0.00	0.00	1.00	605.47	607.00	0.00	0.00	0.00	0.00	0.00
X3	0.									
-51.										
BT	4082.		630.02	530.	4163.	525.74	607.	624.57	607.	624.57
BT	4300.		620.84	4327.	4327.	620.02	4459.	615.27	625.	615.27
BT	4457.		615.02	4593.9	4593.9	610.02	4594.	610.02	615.29	610.02
BT	4759.		608.19	605.	605.	607.57	4891.	606.74	606.74	602.79
BT	4933.4		506.28	602.08	4933.5	606.28	4983.29	600.32	600.32	600.32
BT	4983.4		609.58	600.31	4983.51	609.58	4984.31	600.28	600.28	600.28
BT	4984.41		605.58	605.28	4984.5	608.59	4984.6	605.29	605.29	605.29
BT	4996.5		609.65	605.35	4999.9	609.66	5000.5	609.67	609.67	605.37
BT	5004.5		609.69	605.39	5007.	609.7	5009.5	609.72	609.72	605.42
BT	5013.4		609.76	605.46	5013.51	609.76	5013.6	609.76	609.76	605.46
BT	5014.21		609.77	605.47	5014.3	609.77	5014.4	609.77	609.77	602.34
BT	5014.51		609.77	598.89	5014.6	609.77	5015.29	609.78	609.78	598.96
BT	5015.4		603.78	598.97	5015.51	606.98	5073.4	607.38	607.38	604.27
BT	5073.5		607.38	604.28	5085.	607.75	5117.	608.76	608.76	607.16
BT	5156.		610.	609.74	5160.	610.16	5224.	615.02	615.02	615.
BT	5281.		619.15	619.13	5293.	620.02	5321.	625.02	625.02	625.
BT	5433.		626.62	626.6	5578.	628.66	5672.	630.02	630.02	630.
GR	4082.		625.	4163.	624.57	4177.	4300.	620.	620.	4327.
GR	4450.		615.	4457.	610.	4593.9	4594.	605.	605.	4759.
GR	604.05		602.79	4891.	602.08	4933.4	4933.5	600.32	600.32	4983.29
GR	600.31		600.31	4983.51	600.28	4984.31	4984.41	602.91	602.91	4984.5
GR	600.28		600.38	4996.5	598.88	4999.9	5000.5	596.38	596.38	5004.5
GR	596.23		595.08	5009.5	596.98	5013.4	5013.51	598.88	598.88	5013.6
GR	598.88		605.47	5014.3	598.88	5014.4	598.89	598.9	598.9	5014.6
GR	598.96		5015.29	5015.4	598.98	5015.51	5073.4	604.28	604.28	5073.5
GR	605.04		5085.	5117.	609.74	5156.	5160.	615.	615.	5224.
GR	619.13		5281.	5293.	620.	5321.	5433.	628.66	628.66	5224.
GR	630.		5672.	0.	0.	0.	0.	0.	0.	5578.
NH	7.		4816.	0.23	4891.	0.14	0.057	5013.6	5013.6	0.14
NH	5085.		5117.	1.	5672.	0.	0.	0.	0.	0.
ET	0.00		0.00	0.00	0.00	7.11	4875.00	0.00	0.00	0.00
X7	11260.		4996.5	5013.6	136.	136.	5050.00	0.00	0.00	0.00
GR	630.66		4082.	4163.	625.23	4177.	4300.	620.66	620.66	4327.
GR	615.93		4450.	4457.	610.66	493.9	4594.	605.66	605.66	4759.
GR	604.71		4816.	4891.	602.74	4933.4	4933.5	600.96	600.96	4983.29
GR	600.97		4983.4	4983.51	600.94	4984.31	4984.41	600.94	600.94	4984.5
GR	600.94		4984.6	4996.5	599.54	4999.9	5000.5	597.04	597.04	5004.5
GR	596.89		596.74	5009.5	597.64	5013.4	5013.51	599.54	599.54	5013.6
GR	522.54		599.54	5014.3	599.54	5014.4	5014.51	599.54	599.54	5014.6
GR	505.22		5015.29	5015.4	599.64	5015.51	5073.4	604.94	604.94	5073.5
GR	605.7		607.82	5117.	610.4	5156.	5160.	615.66	615.66	5224.
GR	619.79		5281.	5293.	625.66	5321.	5433.	628.32	628.32	5578.
GR	630.66		5672.	0.	0.	0.	0.	0.	0.	0.

X1	13620.	22.	4989.	5020.	875.	875.	875.	0.	4908.
GR	640.	4518.	635.	4679.	630.	474.	4783.	620.	4991.
GR	619.43	4822.	617.44	4871.	615.	4931.	4989.	609.34	5034.
GR	608.99	4999.9	608.99	5000.	609.33	5007.	5020.	615.	5209.
GR	620.	5075.	625.	5098.	627.61	5122.	5144.	635.	0.
GR	640.	5305.	645.	5427.	0.	0.	0.	0.	0.
NH	7.	1.	4872.	0.27	4918.	0.19	0.055	5010.	0.19
NH	5088.	0.27	5125.	1.	5246.	0.	0.	0.	0.
ET	0.00	0.00	0.00	0.00	0.00	7.41	0.00	0.00	0.00

Cross Section G1

Cross Section O (HSMH Draft)

X1	14711.	21.	4988.	5010.	1091.	1091.	1091.	0.	4918.
GR	635.	4710.	630.	4793.	625.	4852.	4872.	622.36	4933.5
GR	620.6	4962.	620.	4971.9	620.	4972.	4988.	615.69	5020.
GR	615.34	4999.9	615.33	5000.	615.66	5007.	5010.	618.32	5185.
GR	620.	5039.	622.4	5088.	624.36	5128.	5141.	630.	0.
GR	635.	5246.	0.	0.	0.	0.	0.	0.	0.
NH	7.	1.	4831.	0.22	4902.	0.16	0.055	5014.	0.16
NH	5086.	0.23	5114.	1.	5276.	0.	0.	0.	0.
ET	0.00	0.00	0.00	0.00	0.00	7.11	5025.00	0.00	0.00

Cross Section H

Cross Section P (HSMH Draft)

X1	15764.	24.	4984.	5014.	1053.	1053.	1053.	0.	4673.
GR	650.	4319.	645.	4369.	640.	4485.	4570.	630.	4964.
GR	627.29	4631.	626.07	4902.	625.5	4935.	4944.	625.19	5005.
GR	624.44	4984.	620.88	4990.	619.42	4999.9	5000.	620.	5085.
GR	620.88	5010.	624.38	5014.	626.01	5024.	5066.	635.	0.
GR	640.	5107.	640.56	5114.	645.	5170.	5276.	0.	0.
NH	7.	1.	4875.	0.2	4922.	0.13	0.055	5010.	0.13
NH	5074.	0.2	5112.	1.	5275.	0.	0.	0.	0.
ET	0.00	0.00	0.00	0.00	0.00	7.41	0.00	0.00	0.00

Cross Section I

Cross Section Q (HSMH Draft)

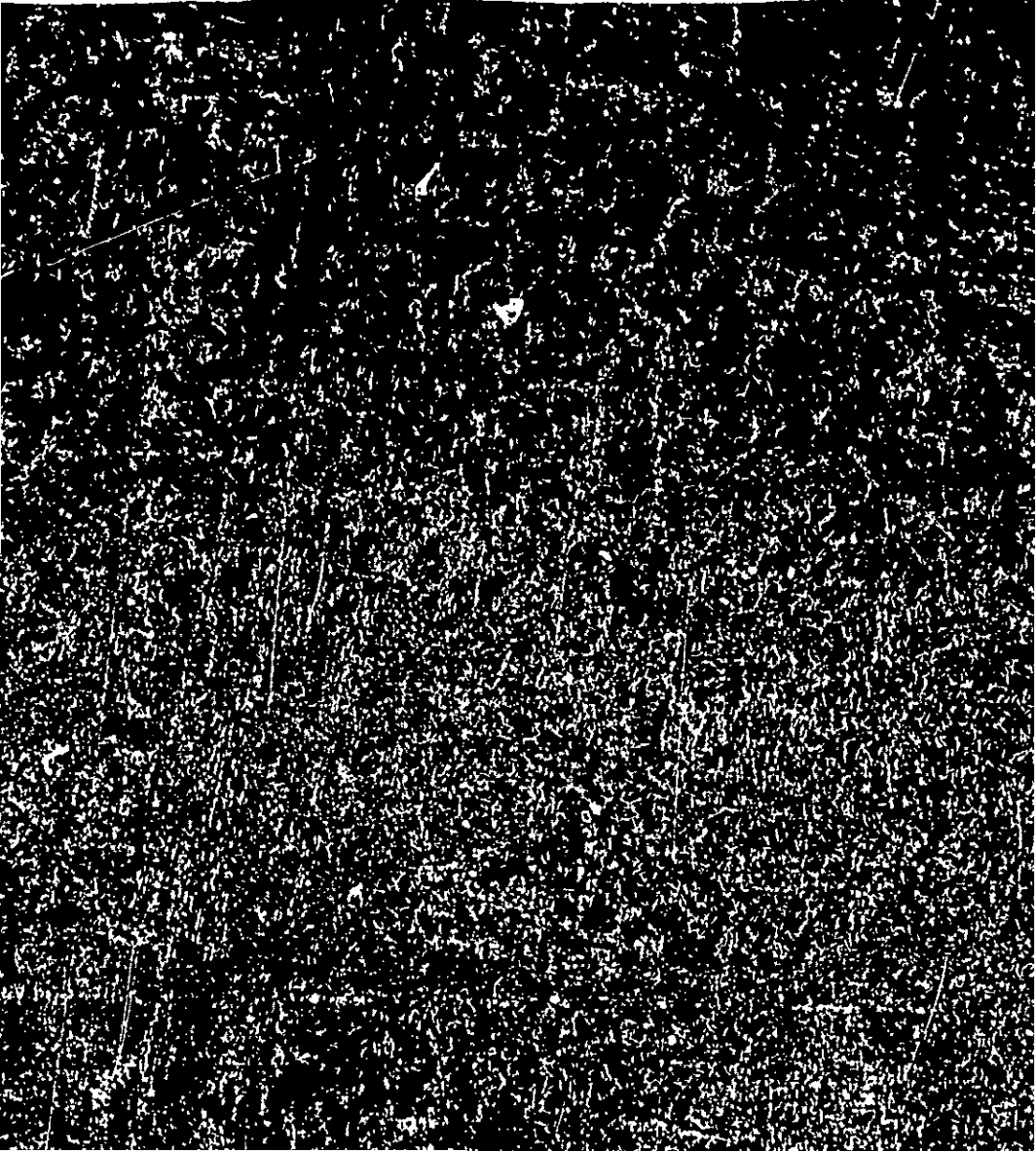
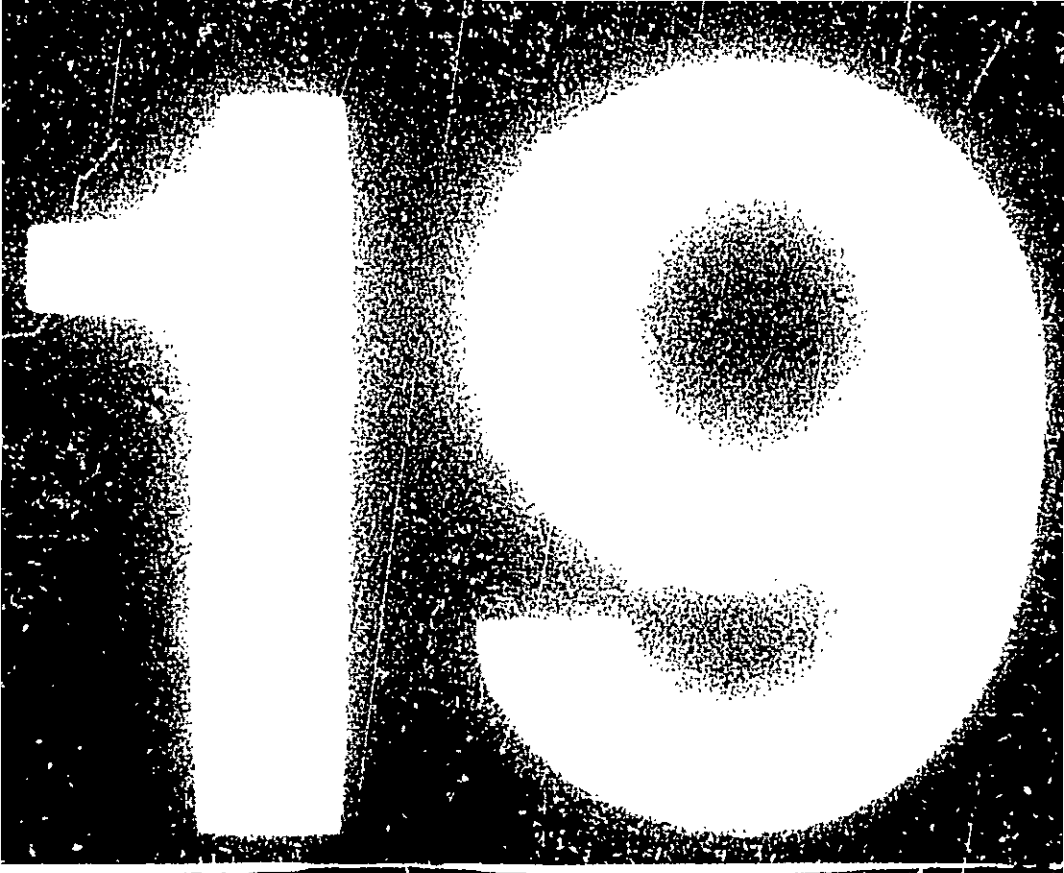
X1	17373.	23.	4992.	5010.	1609.	1609.	1609.	0.	4844.
GR	655.	4535.	650.	4676.	645.	4717.	4765.	635.	4992.
GR	633.65	4875.	631.61	4922.	630.	4960.	4980.	628.44	5010.
GR	625.7	4994.5	625.49	4999.9	625.49	5000.	5005.	629.55	5116.
GR	630.77	5025.	630.26	5035.	635.	5074.	5112.	640.	0.
GR	645.	5149.	650.	5206.	655.	5275.	0.	0.	0.

NH	7.	4889.	0.25	4937.	0.18	4996.	0.06	5019.	0.18
NH	5059.	5092.	1.	5155.	0.	0.	0.	0.	0.
ET	0.00	0.00	0.00	0.00	7.11	4935.00	5023.00	0.00	0.00
X1	18341.	4996.	5019.	968.5	968.5	968.5	0.	0.	0.
GR	667.12	663.76	4516.	659.79	4620.	657.12	4690.	654.36	4760.
GR	652.12	647.12	4873.	615.79	4889.	644.87	4900.	642.12	4933.
GR	641.51	639.56	4949.9	639.55	4950.	638.04	4957.	635.46	4996.
GR	632.86	632.86	4997.1	632.86	4997.39	632.86	4997.68	632.86	4997.97
GR	632.86	632.86	4998.55	632.86	4998.84	632.86	4998.13	632.86	4999.42
GR	632.86	632.86	4999.7	632.86	4999.8	632.86	5000.	632.92	5000.29
GR	632.98	633.03	5000.87	633.09	5001.16	633.15	5001.45	633.21	5001.74
GR	633.27	633.32	5002.32	633.38	5002.61	633.44	5002.9	633.86	5005.
GR	640.56	644.05	5049.9	644.06	5050.	644.74	5052.	647.12	5059.
GR	650.29	652.12	5111.	657.12	5126.	662.12	5135.	667.12	5146.
GR	672.12	0.	0.	0.	0.	0.	0.	0.	0.
NC	7.	4689.	0.3	4937.	0.18	4997.1	0.06	5002.9	0.18
NH	5059.	5092.	1.	5155.	0.	0.	0.	0.	0.
ET	0.00	0.00	0.00	0.00	7.11	4935.00	5023.00	0.00	0.00
X1	18581.	4997.1	5002.9	240.	240.	240.	0.	0.	0.
X3	10.	665.59	4516.	661.62	4620.	658.95	642.65	642.65	4760.
GR	668.95	648.95	4873.	647.62	4889.	646.7	4900.	656.19	4833.
GR	653.95	641.39	4949.9	641.38	4950.	639.87	4967.	637.29	4996.
GR	643.34	634.69	4997.1	634.69	4997.39	634.69	4997.68	634.69	4997.97
GR	634.69	634.69	4998.55	634.69	4998.84	634.69	4998.13	634.69	4999.42
GR	634.69	634.69	4999.7	634.69	4999.8	634.69	5000.	634.75	5000.29
GR	634.81	634.86	5000.87	634.92	5001.16	634.98	5001.45	635.04	5001.74
GR	635.1	635.15	5002.32	635.21	5002.61	635.27	5002.9	635.69	5005.
GR	642.79	645.88	5049.9	645.89	5050.	646.57	5052.	648.95	5059.
GR	652.12	653.95	5111.	658.95	5126.	663.95	5135.	668.95	5146.
GR	673.95	0.	0.	0.	0.	0.	0.	0.	0.
SC	1.033	3.00	0.00	5.50	0.00	61.0	2.3	636.29	635.19
NH	7.	4889.	0.25	4937.	0.18	4997.1	0.06	5002.9	0.18
NH	5059.	5092.	1.	5155.	0.	0.	0.	0.	0.
ET	0.00	0.00	0.00	0.00	7.11	4935.00	5023.00	0.00	0.00

Wellington Lane

X1	18643.	4997.1	5002.9	62.	62.	62.	0.00	0.	0.00
X2	0.00	2.00	640.99	646.69	0.00	0.00	0.00	0.00	0.00
X3	19.	671.12	671.1	4516.	567.76	667.74	646.69	647.08	663.77
BT	-51.	661.12	661.1	4760.	658.36	658.34	4620.	663.79	656.1
BT	4873.	651.12	651.1	4889.	650.39	649.77	4817.	656.12	648.85
BT	4933.	647.82	646.1	4937.	647.55	645.49	4900.	650.	648.85
BT	4950.	646.69	643.53	4957.	648.4	645.49	4949.9	646.7	643.54
BT	4997.	647.11	636.84	4997.1	647.11	642.02	4986.	647.15	639.44
BT	4997.68	647.08	640.93	4997.57	647.07	639.19	4987.39	647.09	640.45
BT	4998.55	647.04	641.7	4998.84	647.07	641.26	4998.26	647.06	641.51
BT	4999.42	647.01	642.03	4999.61	647.	641.85	4999.13	647.02	641.96
BT						642.08	4999.7	646.99	642.09

BT	4999.8	646.99	642.09	5000.	647.	642.08	5000.29	647.	642.08
BT	5000.58	647.01	642.03	5000.87	647.02	641.96	5001.16	647.03	641.85
BT	5001.45	647.04	641.7	5001.74	647.05	641.51	5002.03	647.06	641.76
BT	5002.32	647.07	640.93	5002.61	647.07	640.45	5002.9	647.08	639.19
BT	5005.	647.15	637.84	5019.	647.56	644.94	5049.9	648.49	648.03
BT	5050.	648.56	648.04	5052.	650.	648.72	5059.	651.12	651.1
BT	5092.	654.29	554.27	5111.	656.12	656.1	5126.	661.12	661.1
BT	5135.	666.12	666.1	5146.	671.12	671.1	5155.	676.12	676.1
GR	4428.	667.74	4516.	563.77	620.	661.1	4690.	658.34	4760.
GR	4317.	651.1	4873.	649.77	4889.	648.85	4900.	646.1	4933.
GR	645.49	4937.	643.54	643.53	4950.	642.02	4967.	645.1	4933.
GR	636.84	4997.1	4997.1	637.93	4997.39	637.45	4997.69	632.44	4996.
GR	636.87	4998.26	4998.55	636.68	4998.84	636.42	4999.13	637.12	4997.97
GR	636.3	4999.61	4999.7	636.53	4999.8	636.3	5000.	636.35	4999.42
GR	636.35	5000.58	5000.87	636.29	5001.16	636.68	5001.45	636.3	5000.29
GR	637.12	5002.03	5002.32	637.93	5002.61	639.19	5002.9	637.94	5001.74
GR	644.94	5019.	5049.9	648.04	5050.	648.72	5052.	637.94	5005.
GR	654.27	5092.	5111.	661.1	5126.	666.1	5135.	651.1	5059.
GR	676.1	5155.	0.	0.	0.	0.	0.	57.1	5146.
NH	7.	4889.	0.25	4937.	0.18	4996.	0.06	5019.	0.18
NH	5659.	5092.	1.	5155.	0.	0.	0.	0.	0.
ET	0.00	0.00	0.00	0.00	7.11	4935.00	5023.00	0.00	0.00
X1	18704.	51.	5019.	61.	61.	61.	0.	0.	0.
GR	671.14	4428.	4516.	663.81	4620.	661.14	4690.	658.38	4760.
GR	656.14	4817.	4873.	649.81	4889.	648.89	4900.	646.14	4933.
GR	645.53	4937.	4949.5	643.57	4950.	642.06	4967.	639.48	4996.
GR	636.88	4997.	4997.1	636.88	4997.39	636.88	4997.68	636.88	4997.97
GR	636.88	4998.26	4998.55	636.88	4998.84	636.88	4999.13	635.88	4999.42
GR	635.88	4999.61	4999.7	636.88	4999.8	636.88	5000.	636.94	5000.29
GR	637.	5000.58	5000.87	637.05	5001.16	637.17	5001.45	537.23	5001.74
GR	637.29	5002.03	5002.32	637.4	5002.61	637.46	5002.9	637.88	5005.
GR	644.98	5019.	5049.9	648.08	5050.	648.76	5052.	651.14	5059.
GR	654.31	5092.	5111.	661.14	5126.	666.14	5135.	671.14	5146.
GR	676.14	5155.	0.	0.	0.	0.	0.	0.	0.
NC	7.	4915.	0.1	0.3	0.18	4973.	0.05	5018.	0.18
NH	5064.	5020.	1.	5255.	0.	0.	0.	0.	0.
ET	0.00	0.00	0.00	0.00	7.11	4973.00	5075.00	0.00	0.00
X1	19353.	48.	5018.	649.	649.	649.	0.	0.	0.
GR	686.81	4801.	4829.	681.81	4851.	678.6	4860.	676.81	4865.
GR	671.81	4885.	4907.	666.84	4913.	665.86	4915	666.96	4933.
GR	667.08	4854.9	4955.	665.28	4973.	651.35	4932.	647.68	4997.
GR	647.46	4997.3	4997.6	647.24	4997.9	646.8	4998.2	646.58	4998.5
GR	646.36	4998.8	4999.1	645.92	4999.4	645.7	4999.7	645.63	4999.8
GR	645.48	5000.	5000.3	645.75	5000.5	645.89	5000.9	646.03	5001.2
GR	646.16	5001.5	5001.8	646.44	5002.1	646.57	5002.4	646.71	5002.7
GR	646.85	5003.	5018.	652.08	5064.	655.39	5076.	655.49	5080.
GR	661.98	5099.9	5100.	666.81	5110.	671.5	5156.	671.81	5159.
GR	676.81	5184.	5223.	686.81	5255.	0.	0.	0.	0.



HC	7	1	4915	0.25	4933	0.18	4997	0.06	5003	0.18
NH	5084	0.26	5080	1	5255	0	0	0	0	0
ET	0.00	0.00	0.00	0.00	0.00	7.11	4990.00	5075.00	0.00	0.00
X1	19593	48	4997	5003	240	240	0	0	0	0
X3	10							561	657.5	
GR	389.99	4801	689.99	4829	684.95	4851	681.78	4860	679.99	4865
GR	674.99	4885	669.99	4907	670.02	4913	670.04	4915	670.14	4933
GR	670.26	4954.9	679.26	4955	668.46	4973	654.53	4992	650.86	4997
GR	550.64	4997.3	650.42	4997.6	650.2	4997.9	649.98	4998.2	649.76	4998.5
GR	648.54	4998.8	649.32	4999.1	649.1	4999.4	648.88	4999.7	648.81	4999.8
GR	648.66	5000	649.8	5000.3	648.93	5000.6	649.07	5000.9	649.21	5001.2
GR	649.34	5001.5	649.48	5001.8	649.62	5002.1	649.75	5002.4	649.89	5002.7
GR	650.32	5002	656.86	5018	655.26	5064	649.57	5076	659.67	5080
GR	555.15	5099.9	665.21	5100	669.99	5110	674.68	5156	674.99	5159
GR	679.99	5184	684.99	5223	689.99	5255	0	0	0	0
SV	1.033	0.80	3.00	0.00	5.00	0.00	85.0	2.3	648.67	648.67
NH	7	1	4915	0.25	4933	0.18	4997	0.06	5003	0.18
NH	5084	0.26	5080	1	5255	0	0	0	0	0
ET	0.00	0.00	0.00	0.00	0.00	7.11	4925.00	5098.00	0.00	0.00

Piccadilly Lane

X1	19579	48	4987	5003	86	86	86	0.00	0.00	0.00
X2	0.00	0.00	2.00	554.67	670.11	0.00	0.00	0.00	0.00	0.00
X3	10							674.77	670.11	
BT	-48	4801	690.02	690	4829	690.02	590	4851	685.76	685
BT		4860	680	681.79	4865	684.53	680	4885	682.64	675
BT		4907	680.57	670	4913	650	670.03	4915	679.9	670.05
BT		4535	678.55	670.15	4954.3	677.81	670.27	4955	677.8	670.27
BT		4973	676.44	669.47	4992	675	654.54	4997	674.77	651.67
BT		4397.3	674.76	632.96	4997.6	674.74	653.47	4997.9	674.73	653.81
BT		4998.2	674.72	654.07	4998.5	674.7	4998.8	4998.8	674.69	654.42
BT		4999.3	674.67	654.53	4999.4	674.66	654.61	4999.7	674.65	654.65
BT		5000.6	674.64	654.67	5000	674.63	654.66	5000.3	674.62	654.35
BT		5001.5	674.56	654.27	5000.9	674.59	654.53	5001.2	674.58	654.42
BT		5002.4	674.52	653.47	5001.8	674.55	654.07	5002.1	674.54	653.81
BT		5018	673.81	656.87	5064	671.7	652.98	5003	674.5	651.67
BT		5080	670.98	659.88	5099.9	670.11	665.17	5076	671.15	658.58
BT		5110	670.98	670	5156	675	64.69	5159	675.02	655.22
BT		5184	680.02	680	5223	685	685	690.02	690	690
GR	630	4891	680	4829	625	4851	681.79	4860	680	4865
GR	375	4985	670	4907	670.03	4913	670.15	4915	670.15	4933
GR	630.26	4954.9	670.27	4955	668.47	4973	654.54	4992	651.67	4997
GR	679.92	4997.3	649.87	4997.6	649.53	4999.9	649.27	4998.2	649.07	4998.5
GR	679.92	4998.8	649.81	4999.1	649.73	4999.4	648.69	4999.7	648.67	4999.8
GR	679.92	5000	649.69	5000.3	648.73	5000.6	649.91	5000.9	648.52	5001.2
GR	679.92	5001.5	649.27	5001.8	649.53	5002.1	649.87	5002.4	650.36	5002.7
GR	651.67	5003	655.87	5018	655.27	5064	649.57	5076	659.68	5080
GR	651.15	5099.9	655.22	5100	670	5110	674.68	5156	674.99	5159
GR	680	5184	685	5223	690	5255	0	0	0	0

05CCTS1 16:39:57

NH	7	1.	4915.	0.25	4933.	0.18	4973.	0.06	5018.	0.18
NH	5065	0.26	5080.	1.	5255.	0.	0.	0.	0.	0.
ET	0.00	0.00	0.00	0.00	0.00	7.11	4925.00	5098.00	0.00	0.00
X1	19740.	48.	4973.	5018.	61.	61.	61.	0.	0.	0.
CR	690.53	4891.	690.53	4829.	685.53	4851.	682.32	4860.	680.52	4865.
GR	675.53	4855.	670.53	4907.	670.55	4913.	670.58	4915.	670.68	4933.
CR	670.8	4254.9	570.8	4971.	659.	4973.	655.07	4992.	651.4	4997.
GP	651.18	4997.3	650.96	4997.6	650.74	4997.9	650.52	4998.2	650.3	4998.5
GR	650.00	4998.8	649.96	4999.1	649.64	4999.4	649.42	4999.7	649.35	4999.8
GR	649.2	5000.	649.34	5000.3	648.47	5000.6	649.61	5000.9	649.75	5001.2
GA	648.88	5001.5	650.02	5001.8	550.16	5002.1	650.29	5002.4	650.43	5002.7
GR	650.57	5003.	657.4	5018.	655.8	5064.	659.11	5076.	660.21	5080.
GR	665.7	5099.9	665.75	5109.	670.53	5110.	675.22	5156.	675.53	5159.
SR	680.53	5184.	665.53	5223.	690.53	5255.	0.	0.	0.	0.

NC	7	0.1	4901.	0.1	4930.	0.16	4995.5	0.06	5005.5	0.16
NH	5036	0.26	5081.	1.	5224.	0.	0.	0.	0.	0.
ET	0.00	0.00	0.00	0.00	0.00	7.41	0.00	0.00	0.00	0.00

Cross Section R (HSMN Draft)

X1	20145.	24.	4995.5	5005.5	404.5	404.5	404.5	4842.	0.	4881.
CR	690.	4579.	685.	4716.	680.	4735.	675.	4735.	670.	4995.5
CR	667.87	4901.	665.	4928.	654.55	4930.	660.	4950.	658.31	5005.5
GR	655.98	4998.5	652.77	4959.9	652.68	5000.	652.92	5004.5	656.08	5104.
GR	658.36	5036.	660.	5058.	665.	5077.	635.74	5081.	670.	0.
GR	675.	5142.	680.	5164.	685.	5188.	690.	5224.	0.	0.
NH	7.	1.	4879.	0.26	4925.	0.16	4995.5	0.06	5005.5	0.16
NH	5070.	0.20	5101.	1.	5150.	0.	0.	0.	0.	0.

Cross Section I-2 (@ County Line)
(Cross Section 5 (HSMN Draft))

X1	20757.	17.	4995.5	5005.5	612.	612.	612.	4730.	0.	4800.
GR	685	4530.	660.	4825.	675.	4885.	670.	4996.5	665.	4999.9
GR	663.62	4879.	662.81	4925.	661.58	4995.5	661.15	5045.	670.	5070.
GR	657.25	5000.	658.01	5004.5	661.35	5005.5	665.	5150.	0.	0.
GR	675.	5090.	676.83	5101.	380.	5120.	685.	0.	0.	0.
NH	7.	1.	4879.	0.26	4925.	0.16	4995.5	0.06	5005.5	0.16
NH	5075.	0.26	5101.	1.	5252.	0.	0.	0.	0.	0.
GT	8.	731.	1102.	1250.	1675.	1230.	358.	571.	977.	0.

Cross Section J
(Cross Section 7 (HSMN Draft))

NH	7.	1.	4879.	0.26	4925.	0.16	4995.5	0.06	5005.5	0.16
NH	5075.	0.26	5101.	1.	5252.	0.	0.	0.	0.	0.
GT	8.	731.	1102.	1250.	1675.	1230.	358.	571.	977.	0.

T1 Hayas, Seay, Mattern & Mattern
T2 Proj. No. ERM-90-C-310; Eng: LJM/EKL ET:TFH
T3 Fuda Creek (FC:LN) Date: 10/05/91

Cabarrus County, NC FIS
Comm. No. 2373
100-Year Floodway

J1	ICHECK	INQ	NINY	IDIR	STRT	METRIC	HVINS	Q	VSEL	FQ
J2	HPROF	IFLOT	PREVS	XSECV	XSECH	FN	ALLOC	IBV	CHNIM	ITRACE

6.0

500.65

15.

-1.0

THIS RUN EXECUTED 05OCT91 16:39:06

WEC-2 WATER SURFACE PROFILESVersion 4.6.2: May 1991

NOTE- ASTERISK (*) AT LEFT OF CROSS-SECTION NUMBER INDICATES MESSAGE IN SUMMARY OF ERRORS LIST

Fuda Creek (FC.IN)

SUMMARY PRINTOUT TABLE 110

	SECHO	CWSEL	DIFKVS	EG	TOPWID	QLG6	QCH	QR08	PERENC	STENCL	STCHL	STCHR	S'ENCR
A	199.000	560.65	.65	561.16	794.10	963.86	2407.84	762.30	.00	.00	4989.00	5021.50	.00
	198.000	560.65	.00	561.57	133.97	720.99	2926.20	486.81	.22	4927.52	4969.00	5021.50	5061.49
B	1485.000	565.90	.00	566.39	431.05	684.51	2258.09	1191.40	.00	.00	4995.00	5011.50	.00
	1485.000	566.92	1.02	567.44	143.25	538.83	2447.13	1148.04	.16	4336.92	4985.00	5011.50	5079.87
	2448.900	569.73	.00	570.30	449.55	1215.48	2463.71	454.81	.00	.00	4988.00	5018.50	.00
	2448.800	570.37	.64	570.98	150.00	1165.50	2604.81	363.59	150.00	4900.00	4988.00	5018.50	5050.00
	2570.500	570.25	.00	570.82	449.16	1213.84	2467.72	452.44	.00	.00	4988.00	5018.60	.00
	2570.500	570.85	.59	571.47	150.00	1159.45	2614.69	359.86	150.00	4900.00	4988.00	5018.60	5050.00
	2592.500	572.02	.00	572.23	533.96	1550.55	1933.37	650.08	.00	.00	4988.00	5018.60	.00
	2592.500	572.93	.91	573.23	150.00	1442.46	2239.68	451.86	150.00	4900.00	4988.00	5018.60	5050.00
	2623.900	572.06	.00	572.31	531.95	1460.01	2065.15	608.84	.00	.00	4988.00	5018.50	.00
	2623.800	572.97	.91	573.31	150.00	1348.83	2363.75	421.42	150.00	4900.00	4988.00	5018.50	5050.00
C	3417.000	573.38	.00	573.58	429.95	1636.35	2263.19	234.46	.00	.00	4984.50	5026.00	.00
	3417.000	574.42	1.04	574.63	183.92	1781.03	2352.97	.00	.13	4842.08	4984.50	5026.00	5026.00
D	4002.000	574.44	.00	574.88	372.12	634.69	2629.33	869.93	.00	.00	4984.50	5026.00	.00
	4002.000	575.41	.95	575.91	134.30	454.09	2935.83	744.08	.16	4949.11	4984.50	5026.00	5084.02
E	4463.000	576.33	.00	576.88	179.20	1771.77	2330.43	41.80	.00	.00	4979.50	5009.00	.00
	4463.000	577.25	.93	577.87	139.31	1625.23	2510.77	.00	.19	4869.69	4979.50	5009.00	5009.00
F	5263.000	580.58	.00	581.01	340.57	1249.07	2085.81	799.13	.00	.00	4979.50	5009.00	.00
	5263.000	581.53	.55	582.08	143.24	1178.28	2394.99	560.73	.21	4903.16	4979.50	5009.00	5046.41
G	5983.000	584.76	.00	585.65	295.99	760.22	2425.50	948.28	.00	.00	4982.50	5007.70	.00
	5983.000	585.63	.84	586.84	118.75	482.55	2852.92	768.43	.25	4950.39	4982.50	5007.70	5068.64

	SECHD	CWSEL	DIFKWS	EG	TOPWID	QLDB	QCH	QROB	PERENC	STENCL	STCHL	STCHR	STENCR
H	6638.000	589.43	.00	590.14	251.12	1232.95	2125.90	775.15	.00	.00	4986.50	5006.50	.00
	6638.000	590.46	1.04	591.30	111.59	1174.42	2372.66	586.92	.17	4924.56	4986.50	5006.50	5036.15
J	7104.000	592.03	.00	592.70	269.21	1162.34	2080.66	890.99	.00	.00	4986.50	5006.50	.00
	7104.000	592.93	.90	593.78	110.54	1091.05	2366.56	676.40	.17	4927.85	4986.50	5006.50	5038.40
J	9493.000	602.98	.00	603.42	332.90	1093.13	2035.22	1005.64	.00	.00	4986.00	5011.00	.00
	9493.000	603.99	1.00	604.56	134.49	939.34	2357.75	836.91	.17	4931.34	4986.00	5011.00	5065.83
	10558.000	605.23	.00	606.47	468.40	1424.27	927.59	700.13	.00	.00	4996.50	5013.60	.00
	10558.000	607.37	1.04	607.54	175.00	1451.82	1053.10	537.08	175.00	4875.00	4996.50	5013.60	5050.50
	11098.000	607.45	.00	607.63	443.14	1119.64	1324.43	607.94	.00	.00	4984.50	5014.60	.00
	11098.000	608.40	.95	608.61	175.90	1106.13	1478.34	467.52	175.00	4875.00	4984.50	5014.60	5050.00
	11124.000	608.70	.00	608.77	503.25	1303.65	1033.83	714.52	.00	.00	4984.50	5014.60	.00
	11124.000	609.45	.75	609.56	175.00	1235.73	1245.06	521.21	175.00	4875.00	4984.50	5014.60	5050.00
	11260.000	608.89	.00	609.01	480.80	1438.16	905.52	708.33	.00	.00	4996.50	5013.60	.00
	11260.000	609.66	.77	609.83	175.00	1461.16	1053.71	537.13	175.00	4875.00	4996.50	5013.60	5050.00
K	11678.000	609.80	.00	610.18	399.97	1410.53	1577.18	64.20	.00	.00	4991.20	5016.00	.00
	11678.000	610.63	.33	610.87	266.00	1657.28	1394.72	.00	266.00	4750.00	4991.20	5016.00	5016.00
L	12245.000	612.19	.00	612.79	245.23	173.10	2101.43	777.48	.00	.00	4989.00	5020.00	.00
	12245.000	612.47	.28	613.00	215.00	185.21	2052.77	814.02	215.00	4950.00	4989.00	5020.00	5165.00
M	12745.000	614.65	.00	615.46	173.48	311.49	2328.84	411.67	.00	.00	4989.00	5020.00	.00
	12745.000	614.68	.03	615.49	125.00	301.49	2340.13	410.39	125.00	4950.00	4989.00	5020.00	5075.00
N	13620.000	619.49	.00	620.06	250.46	807.88	2038.95	205.15	.00	.00	4989.00	5020.00	.00
	13620.000	619.62	.13	620.30	150.00	845.89	2177.03	29.08	150.00	4875.00	4989.00	5020.00	5025.00
O	14711.000	625.28	.00	625.95	294.87	573.18	1724.24	754.58	.00	.00	4989.00	5010.00	.00
	14711.000	625.81	.53	626.70	113.70	441.18	1965.67	644.95	.17	4945.56	4986.00	5010.00	5059.25
P	15764.000	630.33	.00	630.79	401.14	953.93	1918.47	179.60	.00	.00	4984.00	5014.00	.00
	15764.000	630.84	.51	631.27	225.00	1027.65	1931.29	93.06	225.00	4800.00	4984.00	5014.00	5025.00
Q	17373.000	636.35	.00	636.70	262.68	1192.46	1263.44	596.09	.00	.00	4992.00	5010.00	.00
	17373.000	636.65	.30	637.14	118.79	1173.47	1439.28	439.25	.16	4919.56	4992.00	5010.00	5036.35
*	18341.000	642.80	.00	644.48	112.55	1013.51	2018.42	20.07	.00	.00	4996.00	5019.00	.00
	18341.000	643.47	.67	644.81	88.00	1054.74	1984.37	12.89	83.00	4935.00	4996.00	5019.00	5023.00
*	18581.000	647.28	.00	648.23	160.98	1486.63	960.88	610.51	.00	.00	4997.10	5002.90	.00
	18581.000	647.02	.26	648.31	88.00	1494.88	1046.42	510.70	88.00	4935.00	4997.10	5002.90	5023.00
*	18643.000	650.79	.00	651.13	191.45	1652.05	699.40	700.55	.00	.00	4997.10	5002.90	.00
	18643.000	651.77	.98	652.17	88.00	1740.71	763.31	547.99	88.00	4935.00	4997.10	5002.90	5023.00

SECNO	CNSEL	DIFKVS	EG	TOPMID	QLOB	QCH	QRQB	PERENC	STENCH	STCHL	STCHR	STENCR
* 18704.000	651.65	.00	651.43	184.72	1194.46	1668.48	189.06	.00	.00	4996.00	5019.00	.00
* 18704.000	652.02	.97	652.44	88.00	1210.77	1818.24	22.99	88.00	4935.00	4996.00	5019.00	5023.00
* 19353.000	656.10	.00	656.31	93.06	.00	2531.38	520.62	.00	.00	4973.00	5018.00	.00
* 19353.000	656.17	.07	656.32	89.58	.00	2525.22	526.78	102.00	4973.00	4973.00	5018.00	5075.00
* 19593.000	662.22	.00	663.60	107.68	274.28	1130.32	1647.39	.00	.00	4997.00	5003.00	.00
* 19593.000	662.16	-.06	663.73	85.00	215.33	1179.36	1657.30	85.00	4990.00	4997.00	5003.00	5075.00
* 19679.000	675.28	.00	675.33	276.51	563.27	565.88	1922.85	.00	.00	4997.00	5003.00	.00
* 19679.000	676.31	1.03	676.35	173.00	574.20	561.51	1916.29	173.00	4925.00	4997.00	5003.00	5098.00
* 19740.000	675.29	.00	675.35	270.67	98.65	1985.62	967.73	.00	.00	4973.00	5018.00	.00
* 19740.000	676.32	1.03	676.38	173.00	100.04	1997.12	954.84	173.00	4925.00	4973.00	5018.00	5098.00
* 20145.000	675.44	.00	675.47	305.14	1312.42	634.16	1105.42	.00	.00	4935.50	5005.50	.00
* 20145.000	676.44	1.00	676.48	157.92	1309.02	664.79	1078.19	.07	4916.73	4995.50	5005.50	5074.65
* 20757.000	675.70	.00	675.73	417.67	1786.43	497.24	758.33	.00	.00	4995.50	5005.50	.00
* 20757.000	676.69	.99	676.73	243.92	1823.97	529.47	698.56	.09	4812.35	4995.50	5005.50	5056.27
* 21207.000	675.89	.00	675.90	376.69	719.75	195.21	335.04	.00	.00	4995.50	5005.50	.00
* 21207.000	676.87	.98	676.88	209.83	726.08	211.02	312.90	.11	4660.72	4995.50	5005.50	5070.55

R

DECT91 16:38:57

PAGE 19

SUMMARY OF ERRORS AND SPECIAL NOTES

CAUTION SECNO= 19353.000	PROFILE=	1	CRITICAL DEPTH ASSUMED
CAUTION SECNO= 19353.000	PROFILE=	1	PROBABLE MINIMUM SPECIFIC ENERGY
CAUTION SECNO= 19353.000	PROFILE=	1	20 TRIALS ATTEMPTED TO BALANCE WSEL
CAUTION SECNO= 19353.000	PROFILE=	2	CRITICAL DEPTH ASSUMED
CAUTION SECNO= 19353.000	PROFILE=	2	PROBABLE MINIMUM SPECIFIC ENERGY
CAUTION SECNO= 19353.000	PROFILE=	2	20 TRIALS ATTEMPTED TO BALANCE WSEL

05OCT91 16:38:57

FLOODWAY DATA, Fuda Creek (FC.IN)
PROFILE NO. 2

REGULATED

STATION	WIDTH	FLOODWAY SECTION AREA	MEAN VELOCITY	WATER SURFACE ELEVATION WITH FLOODWAY	WATER SURFACE ELEVATION WITHOUT FLOODWAY	DIFFERENCE
A	198.000	134	4.8	560.7	560.7	0.0
B	1485.000	1088	3.9	566.9	555.9	1.0
	2448.900	952	4.3	570.3	569.7	.6
	2570.500	150	4.4	570.9	570.3	.6
	2552.500	150	3.3	572.9	572.0	.9
	2623.900	150	3.2	573.0	572.1	.9
	3412.000	184	2.7	574.4	573.4	1.0
D	4002.000	135	4.2	575.4	574.4	1.0
E	4463.000	139	4.5	577.2	576.3	.9
F	5263.000	143	4.1	581.6	580.6	1.0
G	5883.000	118	5.4	585.6	584.8	.8
H	6638.000	112	4.1	590.4	589.4	1.0
I	7104.000	111	4.1	592.9	592.0	.9
J	8423.000	134	3.4	604.0	603.0	1.0
	10558.000	175	2.2	607.3	606.3	1.0
	11098.000	175	2.4	608.5	607.5	1.0
	11124.000	175	1.469	609.4	608.7	.7
	11260.000	175	1.392	609.7	608.9	.8
	11678.000	265	1.314	610.6	609.8	.8
L	12245.000	215	3.3	612.5	612.2	.3
M	12445.000	125	4.9	614.6	614.6	.0
N	13020.000	150	3.9	619.6	619.5	.1
O	13711.000	144	4.0	623.8	623.3	.5
P	15754.000	225	2.5	630.8	630.3	.5
Q	17273.000	113	3.7	636.6	636.3	.3
	18341.000	88	6.1	643.5	642.8	.7
	18581.000	88	4.7	647.0	647.3	-.3
	18643.000	86	3.5	651.8	650.8	1.0
	18705.000	88	3.4	652.1	651.1	1.0
	18953.000	90	8.1	656.2	656.1	.1
	19593.000	85	5.0	662.1	662.2	-.1
	19779.000	173	1.1	676.3	675.3	1.0
	19740.000	173	1.2	676.3	675.3	1.0
R	20145.000	158	1.1	676.4	675.4	1.0
	20757.000	244	.9	676.7	675.7	1.0
	21207.000	210	.5	675.9	675.9	1.0

675.4